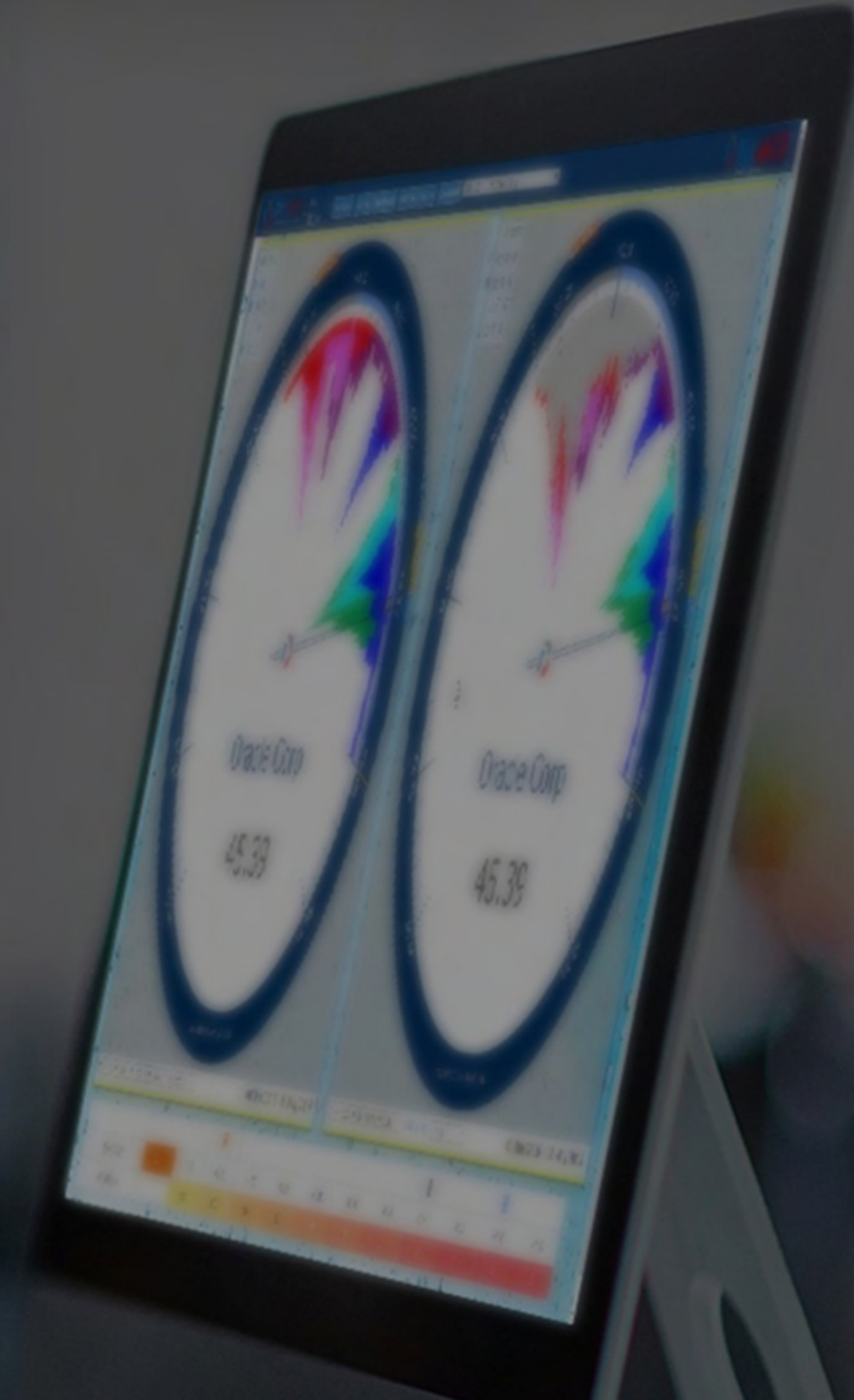




QUANTLOGIC
A quantum leap in equity analysis

Quantlogic Edge Sector Analytics Report

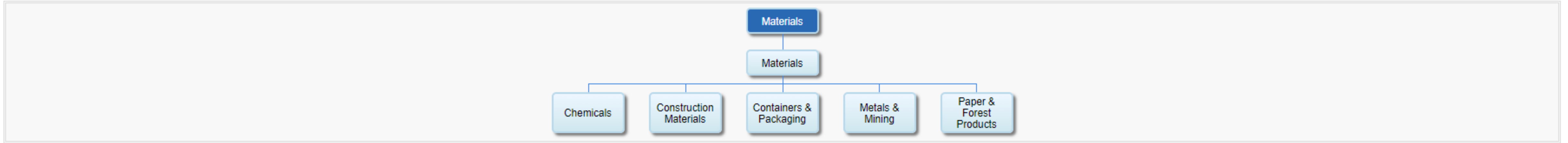
Materials Sector Materials Industry Groups & Industries





Indicator	Sector Analytics	Category	Industry
Speedo Settings	LHS: 3 Months-Daily (Speedo)	RHS: 6 Months-Daily (Speedo)	Color Key: Last 10 - Weekly
Sector	Materials		
Stock Exchange	New York Stock Exchange (NYSE)	Symbol list	S&P500, Data drawn from 500 Symbols

Sector Classification



Sector Analytics - Relative Performance Analytics

Relative performance of various time periods, Ranging between 1 day and 84 Months.

Sector Materials **Symbol (Sector)** \$SP500_15 **Market** S&P500

Symbol	Description	Category	Date	Close	Rank#	1D	5D	10D	MTD	1 mos	2 mos	3 mos	6 mos	12 mos	24 mos	36 mos	48 mos	60 mos	72 mos	84 mos
\$INX	S&P 500 Index	Index	11/05/2024	5782.76	1	0	0	0	0	0	0	0	0	0	0	0	0	0	0	0
\$SP500_151040	Metals & Mining	Industry	11/05/2024	248.03	2	-0.02	1.52	0.1	1.26	-8.04	-1.68	-5.31	-16.05	-14.47	-30.31	-8.3	-4.23	50.22	34.58	6.82
\$SP500_151030	Containers & Packaging	Industry	11/05/2024	328.94	3	-0.42	-1.25	4.33	1.97	2.59	-0.09	1.41	-1.79	-0.37	-20.21	-25.16	-53.91	-58.31	-66.33	-98.83
\$SP500_151020	Construction Materials	Industry	11/05/2024	559.51	4	-0.48	-2.42	4.63	-1.97	11.49	10.26	-5.71	-11.98	-1.3	12.89	17.21	45.8	18.58	82.85	18.34
\$SP500_15	Materials	Sector	11/05/2024	588.95	5	-1.03	-0.88	-0.12	-0.52	-2.27	-2.69	-4.4	-8.29	-13.91	-29.24	-15.88	-24.27	-29.95	-37.83	-63.66
\$SP500_1510	Materials	IG	11/05/2024	588.95	6	-1.03	-0.88	-0.12	-0.52	-2.27	-2.69	-4.4	-8.29	-13.91	-29.24	-15.88	-24.27	-29.95	-37.83	-63.66
\$SP500_151010	Chemicals	Industry	11/05/2024	946.8	7	-1.44	-1.25	-1.34	-1.21	-2.75	-4.53	-4.95	-6.76	-16.85	-33.3	-18.19	-26.48	-38.6	-48.94	-71.06
Subsidiary indexes Count		6 / 7	Subsidiary indexes Outperform Count			0	1	3	2	2	1	1	0	0	1	1	1	2	2	2

Sector Information

SEC -
IG -
SYM \$INX

Price Control Point (PCPs)

2M-D 5832.2	3M-D 5714.9
3M-W 5718.2	6M-D 5472.1
6M-W 5501.3	12M-D 5472.1
12M-W 5501.3	24M-W 4133.1
36M-W 3958	48M-W 4451.8
60M-W 4451.8	72M-W 4451.8
84M-W 2730.9	

Price Control Cluster (PCCs)

PCC1 4451.9 PCC2 5721.9

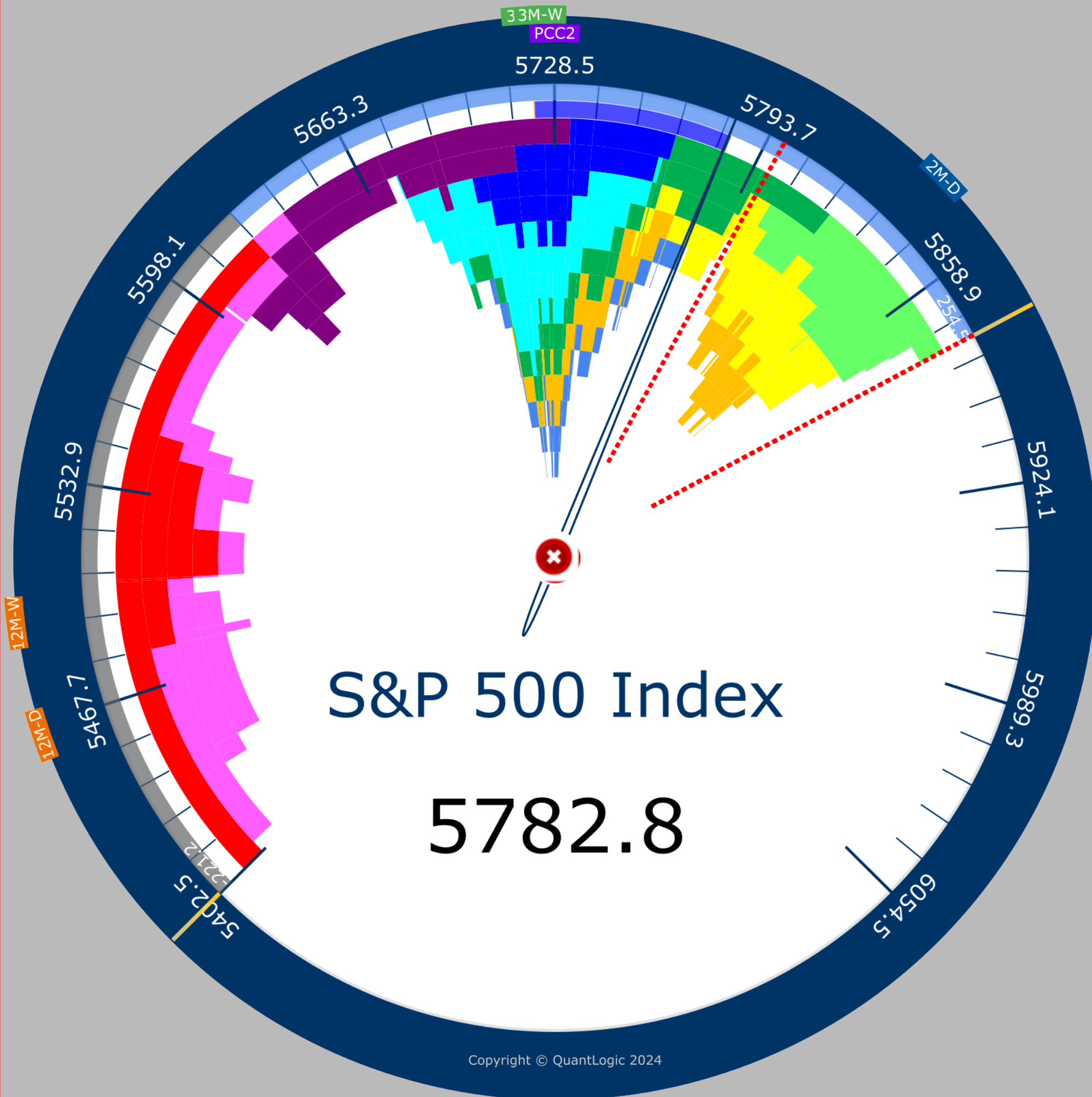
Color Key (Weekly)

01 Jun 2024 - 30 Aug 2024 (RHS)	
06 Sep 2024	13 Sep 2024
20 Sep 2024	27 Sep 2024
04 Oct 2024	11 Oct 2024
18 Oct 2024	25 Oct 2024
01 Nov 2024	08 Nov 2024

3MD Quantlogic Distribution (QD)

5399.2	5798.5
5233.6	5878.3
5157.4	5878.3

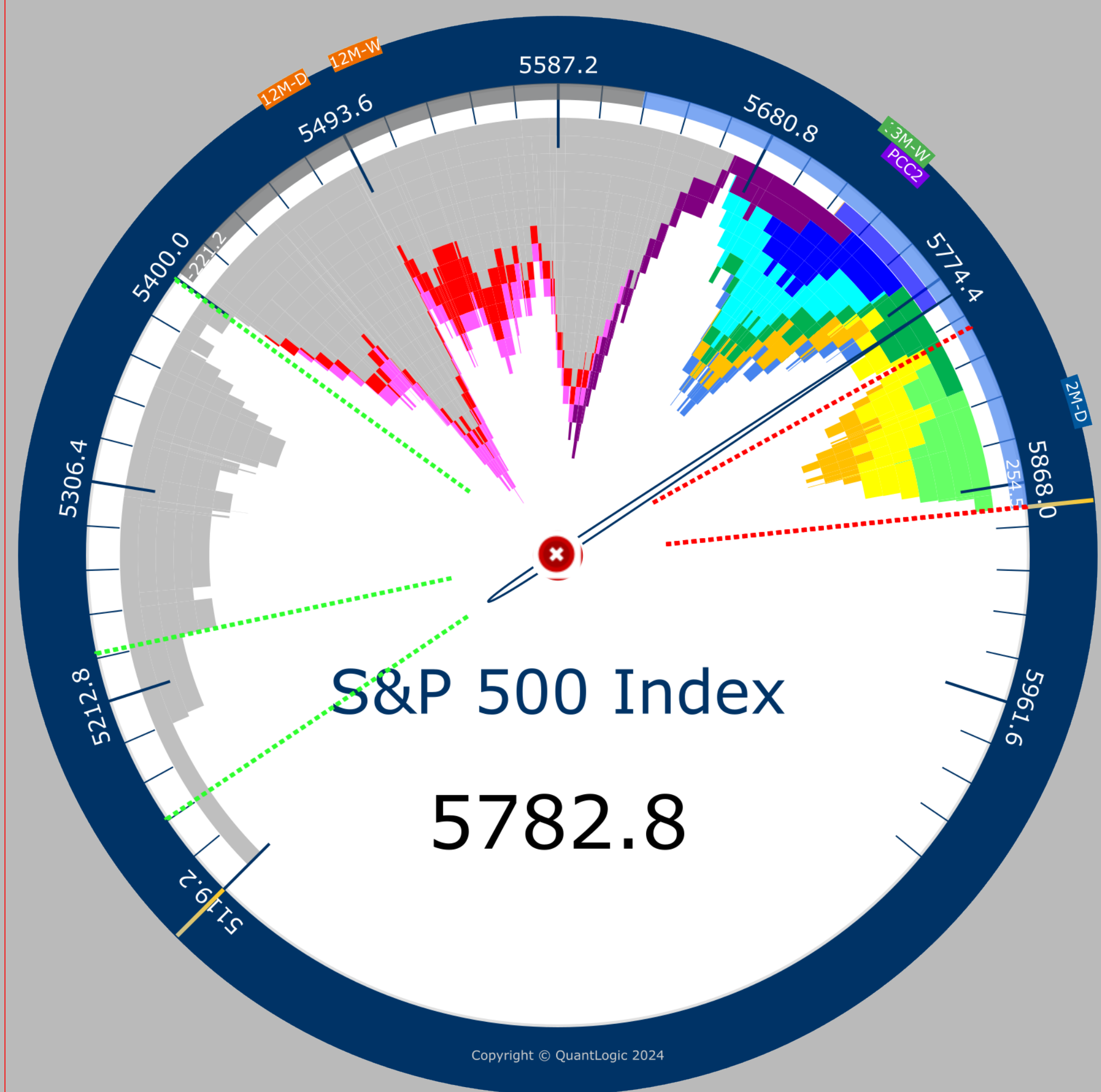
3 Months O: 5623.89 H: 5878.46 L: 5402.62 C: 5782.76



01 Sep 2024 - 05 Nov 2024

3 Months Daily Weekly Last 10 3 Months 11/06/24 12:24 AM

6 Months - O: 5297.15 H: 5878.46 L: 5119.26 C: 5782.76



01 Jun 2024 - 05 Nov 2024

05 Nov 2024 6 Months Daily 11/06/2024 12:24 AM

Sector Information

- SEC Materials
- IG Materials
- IND Metals & Mining
- SYM \$SP500_151040

Price Control Point (PCPs)

- | | |
|---|---|
| 2M-D 247.2 | 3M-D 246.9 |
| 3M-W 247.4 | 6M-D 246.9 |
| 6M-W 259.8 | 12M-D 221.3 |
| 12M-W 221.7 | 24M-W 221.7 |
| 36M-W 219.7 | 48M-W 219.7 |
| 60M-W 219.7 | 72M-W 219.7 |
| 84M-W 219.7 | |

Price Control Cluster (PCCs)

- | | |
|--|--|
| PCC1 219.6 | PCC2 221.6 |
| PCC3 247 | |

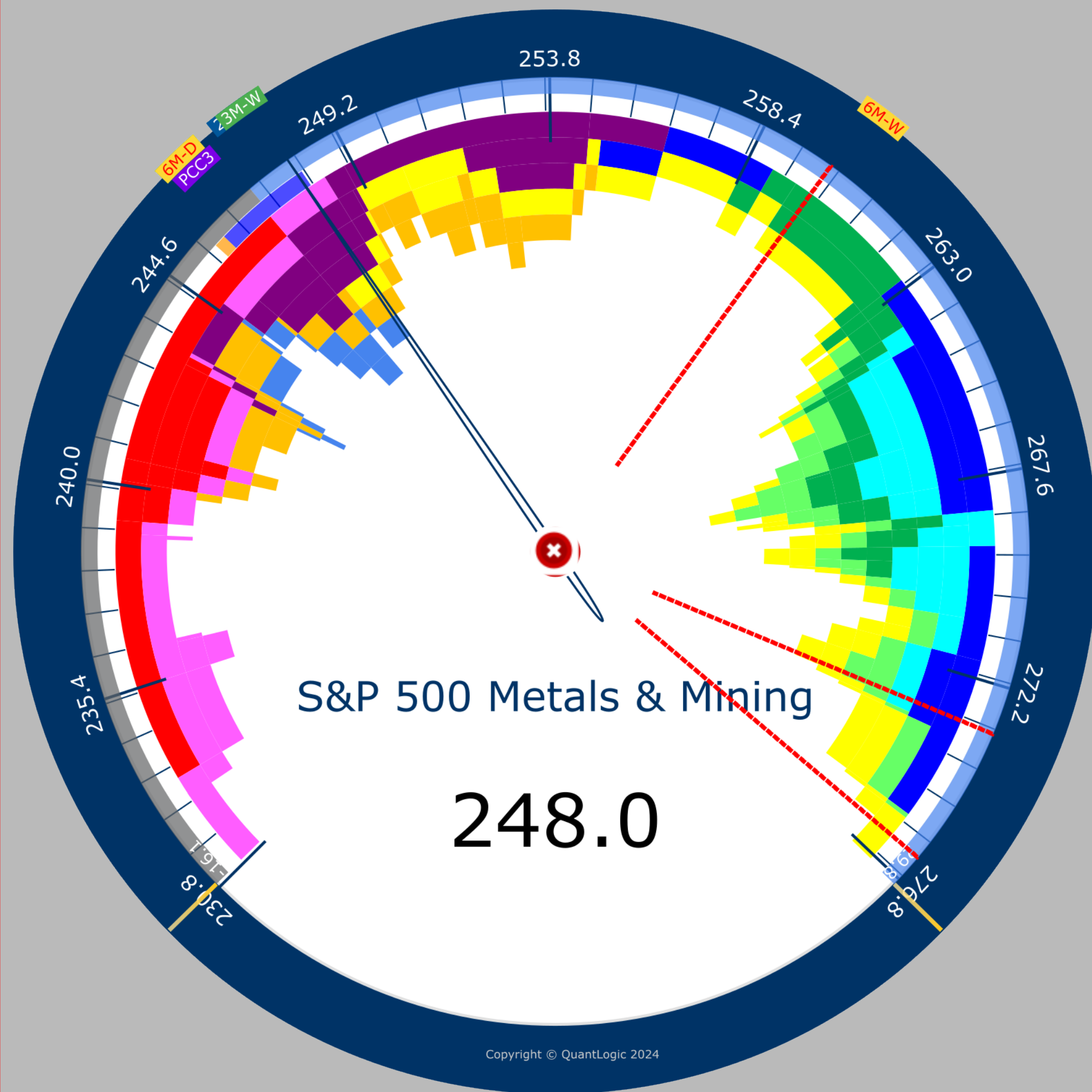
Color Key (Weekly)

- | | |
|---|---|
| 01 Jun 2024 - 30 Aug 2024 (RHS) | |
| 06 Sep 2024 | 13 Sep 2024 |
| 20 Sep 2024 | 27 Sep 2024 |
| 04 Oct 2024 | 11 Oct 2024 |
| 18 Oct 2024 | 25 Oct 2024 |
| 01 Nov 2024 | 08 Nov 2024 |

3MD Quantlogic Distribution (QD)

- | | |
|--|--|
| 230.1 | 260 |
| 230.1 | 273.2 |
| 230.1 | 276.2 |

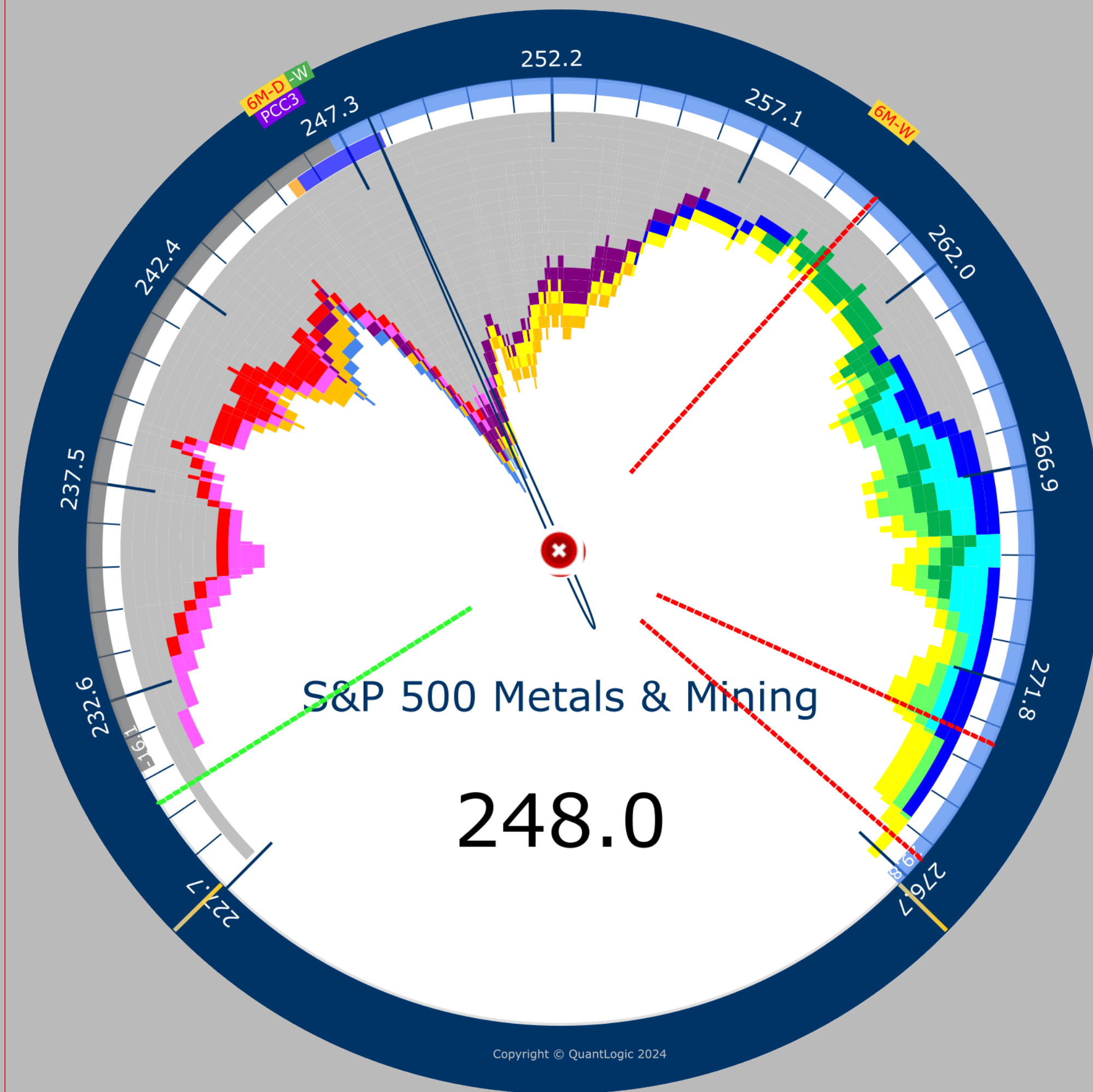
3 Months O: 247.05 H: 276.94 L: 230.89 C: 248.03



01 Sep 2024 - 05 Nov 2024

3 Months Daily Weekly Last 10 3 Months 11/06/24 12:24 AM

6 Months - O: 261.08 H: 276.94 L: 227.84 C: 248.03



01 Jun 2024 - 05 Nov 2024

05 Nov 2024 6 Months Daily 11/06/2024 12:24 AM

Sector Information

- SEC Materials
- IG Materials
- IND Containers & Packaging
- SYM \$SP500_151030

Price Control Point (PCPs)

- | | |
|---|---|
| 2M-D 292 | 3M-D 306.8 |
| 3M-W 303.2 | 6M-D 306.9 |
| 6M-W 294 | 12M-D 306.9 |
| 12M-W 267.1 | 24M-W 245 |
| 36M-W 245 | 48M-W 306.8 |
| 60M-W 242 | 72M-W 245 |
| 84M-W 248.5 | |

Price Control Cluster (PCCs)

- | | |
|--|--|
| PCC1 245 | PCC2 306.9 |
|--|--|

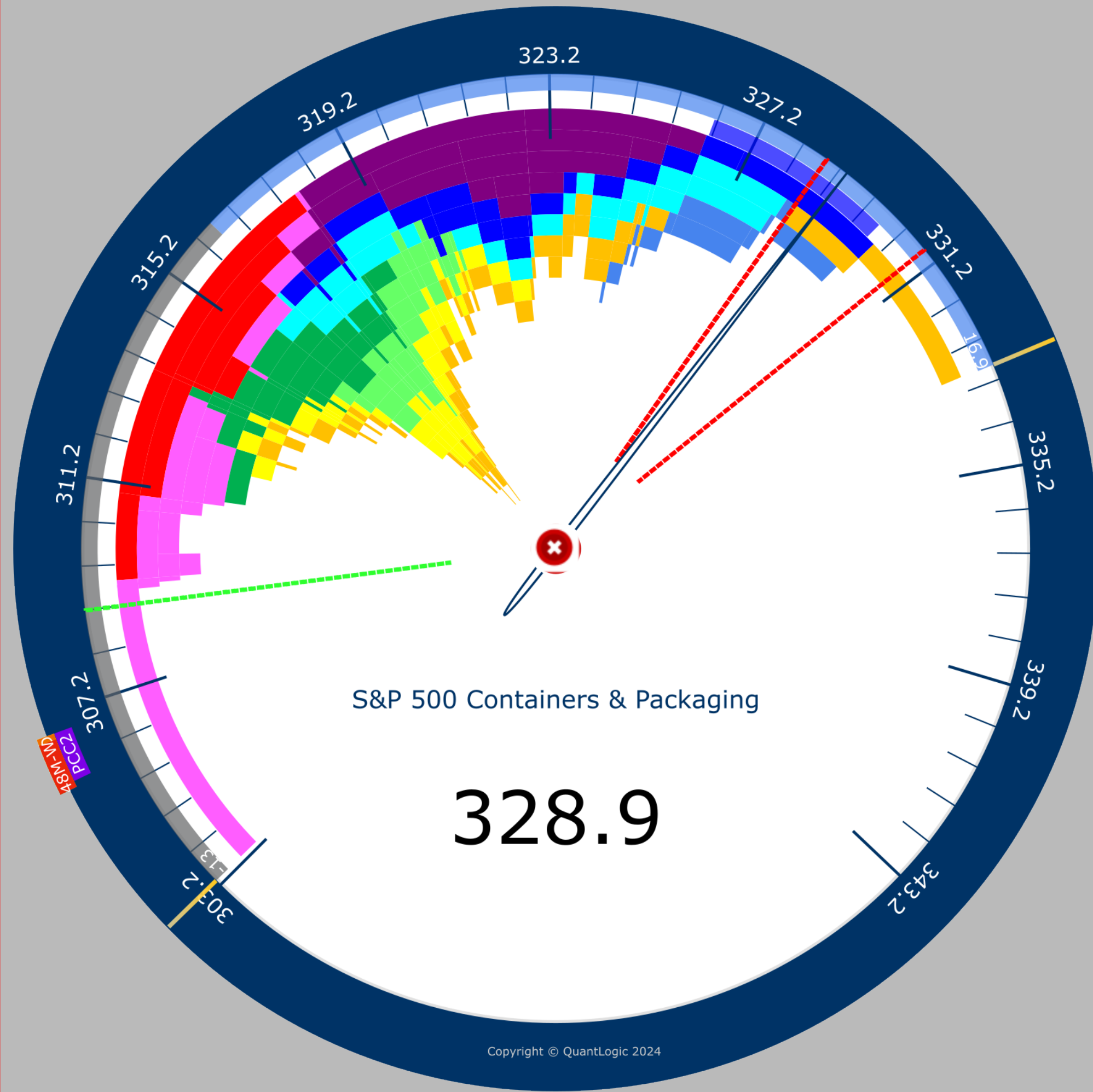
Color Key (Weekly)

- | | |
|---|---|
| 01 Jun 2024 - 30 Aug 2024 (RHS) | |
| 06 Sep 2024 | 13 Sep 2024 |
| 20 Sep 2024 | 27 Sep 2024 |
| 04 Oct 2024 | 11 Oct 2024 |
| 18 Oct 2024 | 25 Oct 2024 |
| 01 Nov 2024 | 08 Nov 2024 |

3MD Quantlogic Distribution (QD)

- | | |
|--|--|
| 308.8 | 328.5 |
| 291 | 328.5 |
| 289 | 330.9 |

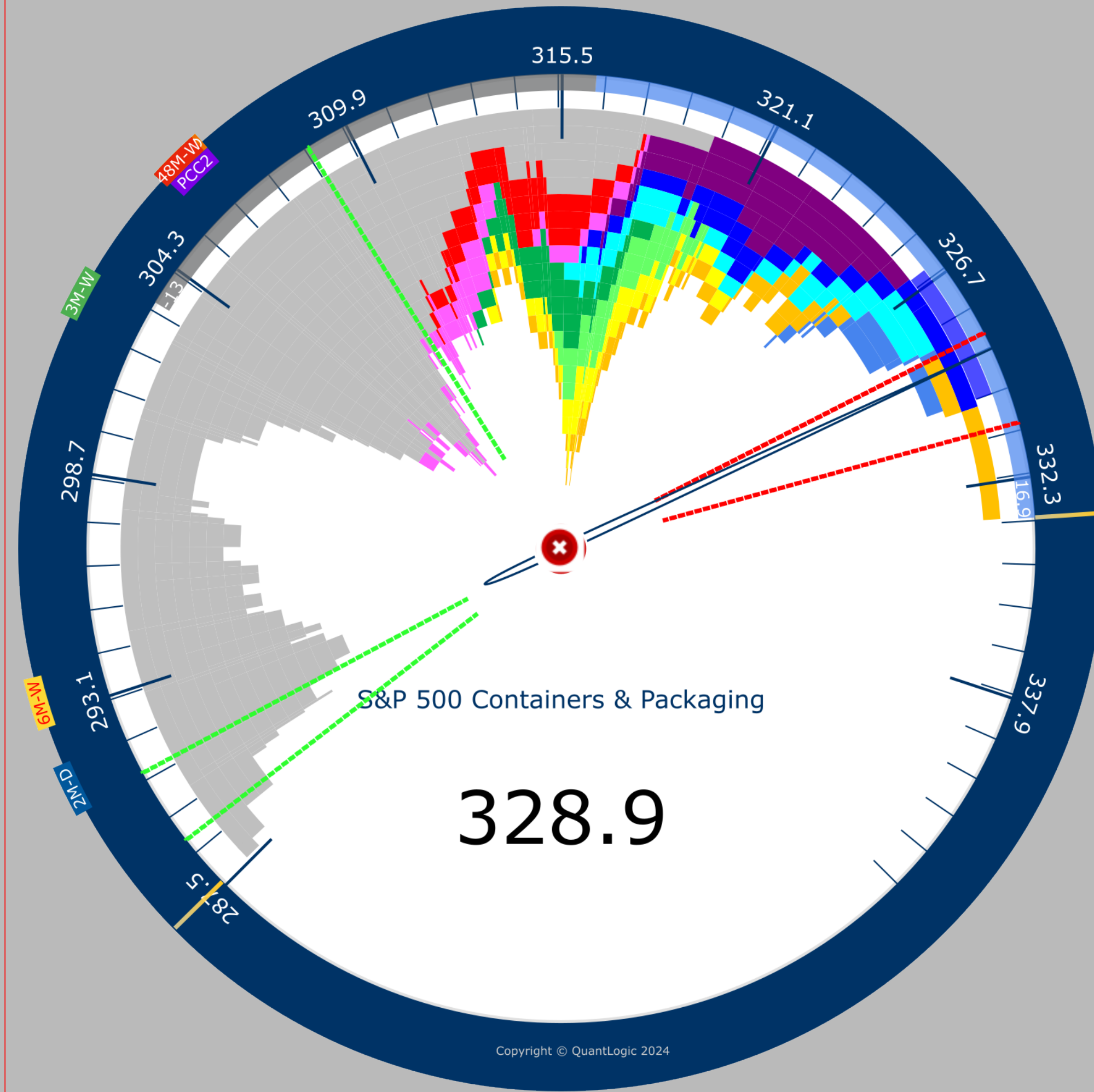
3 Months O: 316.36 H: 333.32 L: 303.31 C: 328.94



01 Sep 2024 - 05 Nov 2024

3 Months Daily Weekly Last 10 3 Months 11/06/24 12:24 AM

6 Months - O: 313.73 H: 333.32 L: 287.62 C: 328.94



01 Jun 2024 - 05 Nov 2024

05 Nov 2024 6 Months Daily 11/06/2024 12:24 AM

Sector Information

- SEC Materials
- IG Materials
- IND Construction Materials
- SYM \$SP500_151020

Price Control Point (PCPs)

- | | |
|---|---|
| 2M-D 506.7 | 3M-D 507.5 |
| 3M-W 517.3 | 6M-D 565 |
| 6M-W 536.4 | 12M-D 565 |
| 12M-W 517.3 | 24M-W 345.7 |
| 36M-W 358.7 | 48M-W 346 |
| 60M-W 346 | 72M-W 346 |
| 84M-W 346 | |

Price Control Cluster (PCCs)

- | | |
|--|--|
| PCC1 345.9 | PCC2 506.9 |
|--|--|

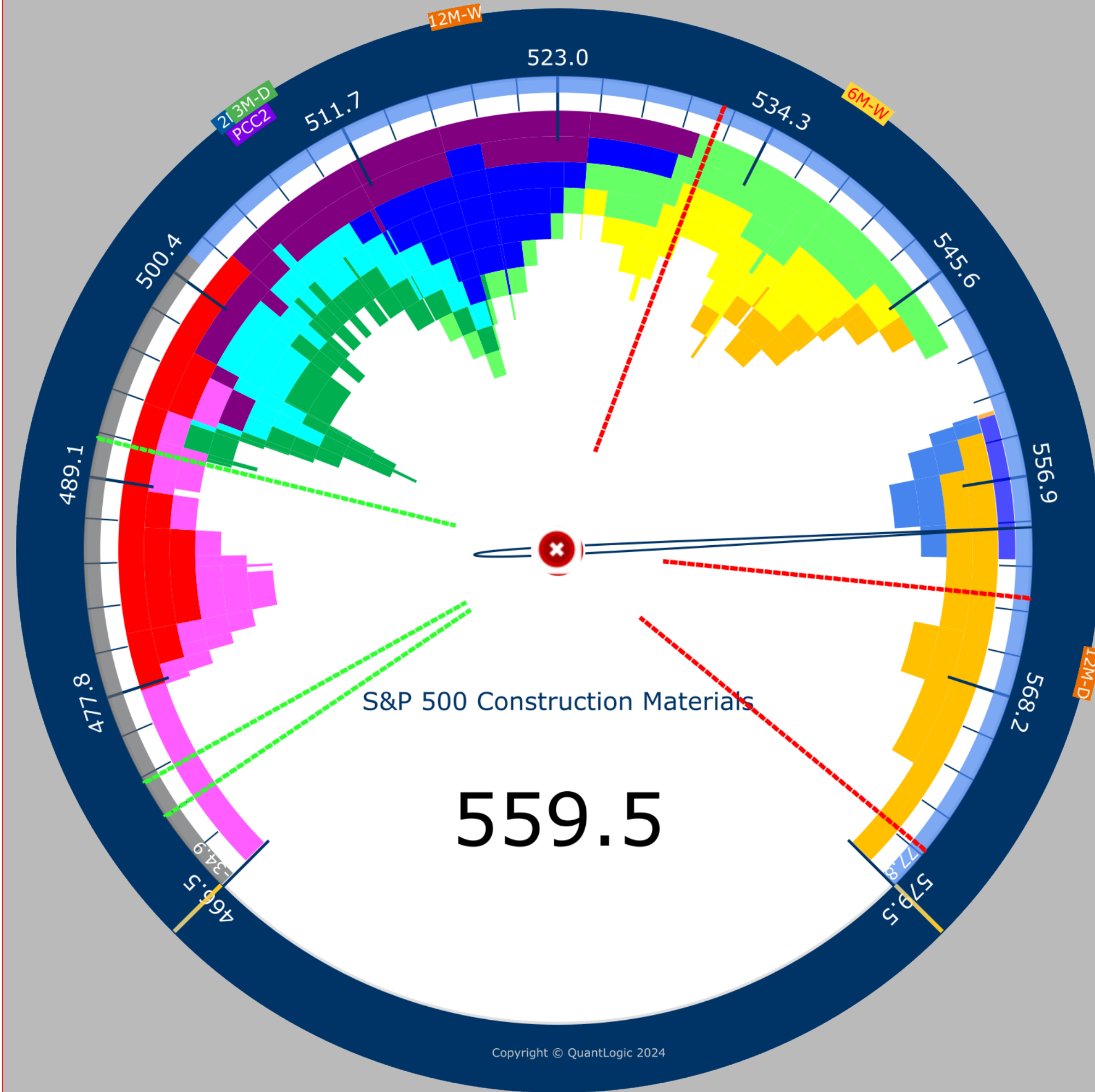
Color Key (Weekly)

- | | |
|---|---|
| 01 Jun 2024 - 30 Aug 2024 (RHS) | |
| 06 Sep 2024 | 13 Sep 2024 |
| 20 Sep 2024 | 27 Sep 2024 |
| 04 Oct 2024 | 11 Oct 2024 |
| 18 Oct 2024 | 25 Oct 2024 |
| 01 Nov 2024 | 08 Nov 2024 |

3MD Quantlogic Distribution (QD)

- | | |
|--|--|
| 491.1 | 531.6 |
| 473.1 | 563.1 |
| 471.1 | 577.1 |

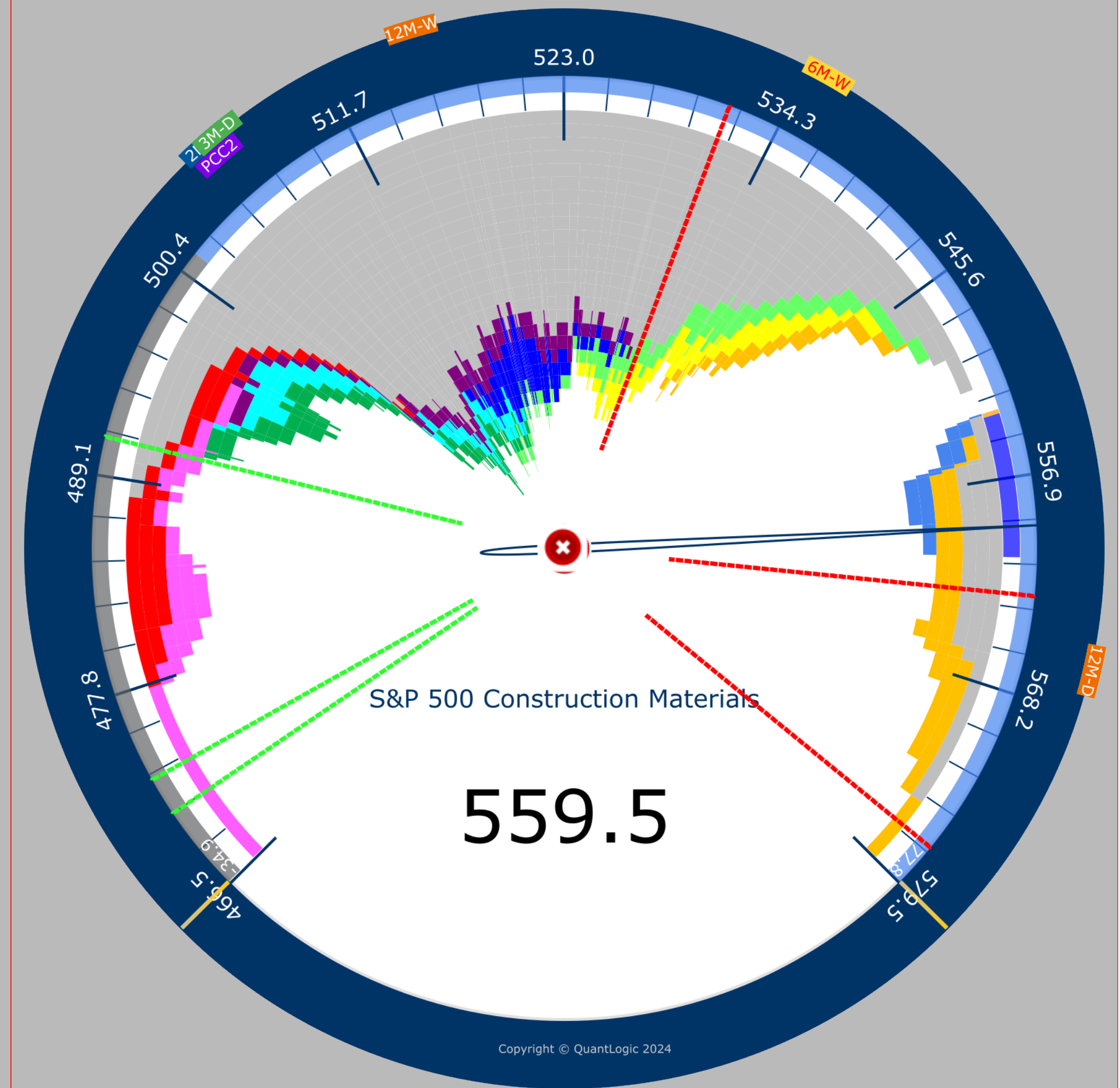
3 Months O: 501.53 H: 579.43 L: 466.62 C: 559.51



01 Sep 2024 - 05 Nov 2024

3 Months Daily Weekly Last 10 3 Months 11/06/24 12:24 AM

6 Months - O: 538.41 H: 579.43 L: 466.62 C: 559.51



01 Jun 2024 - 05 Nov 2024

05 Nov 2024 6 Months Daily 11/06/2024 12:24 AM

Sector Information

- SEC Materials
- IG Materials
- SYM \$SP500_1510

Price Control Point (PCPs)

- | | |
|---|---|
| 2M-D 570.6 | 3M-D 562 |
| 3M-W 563.3 | 6M-D 568.1 |
| 6M-W 564.7 | 12M-D 568.1 |
| 12M-W 564.7 | 24M-W 511.5 |
| 36M-W 511.5 | 48M-W 511.5 |
| 60M-W 511.5 | 72M-W 511.5 |
| 84M-W 511.5 | |

Price Control Cluster (PCCs)

- | | |
|--|--|
| PCC1 511.6 | PCC2 563.6 |
| PCC3 568.9 | |

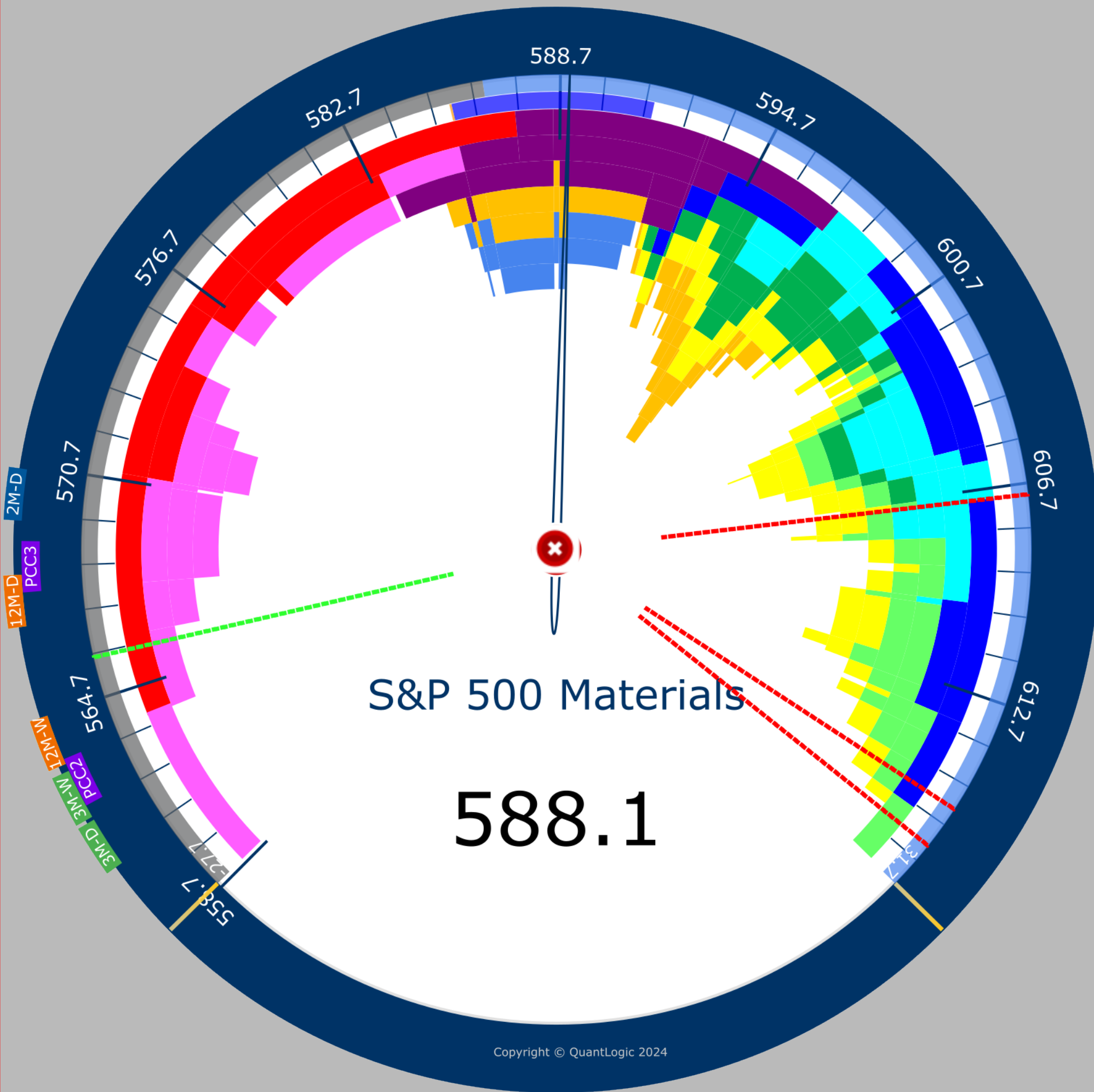
Color Key (Weekly)

- | | |
|---|---|
| 01 Jun 2024 - 30 Aug 2024 (RHS) | |
| 06 Sep 2024 | 13 Sep 2024 |
| 20 Sep 2024 | 27 Sep 2024 |
| 04 Oct 2024 | 11 Oct 2024 |
| 18 Oct 2024 | 25 Oct 2024 |
| 01 Nov 2024 | 08 Nov 2024 |

3MD Quantlogic Distribution (QD)

- | | |
|--|--|
| 565.8 | 607 |
| 554.6 | 615.8 |
| 551.4 | 617 |

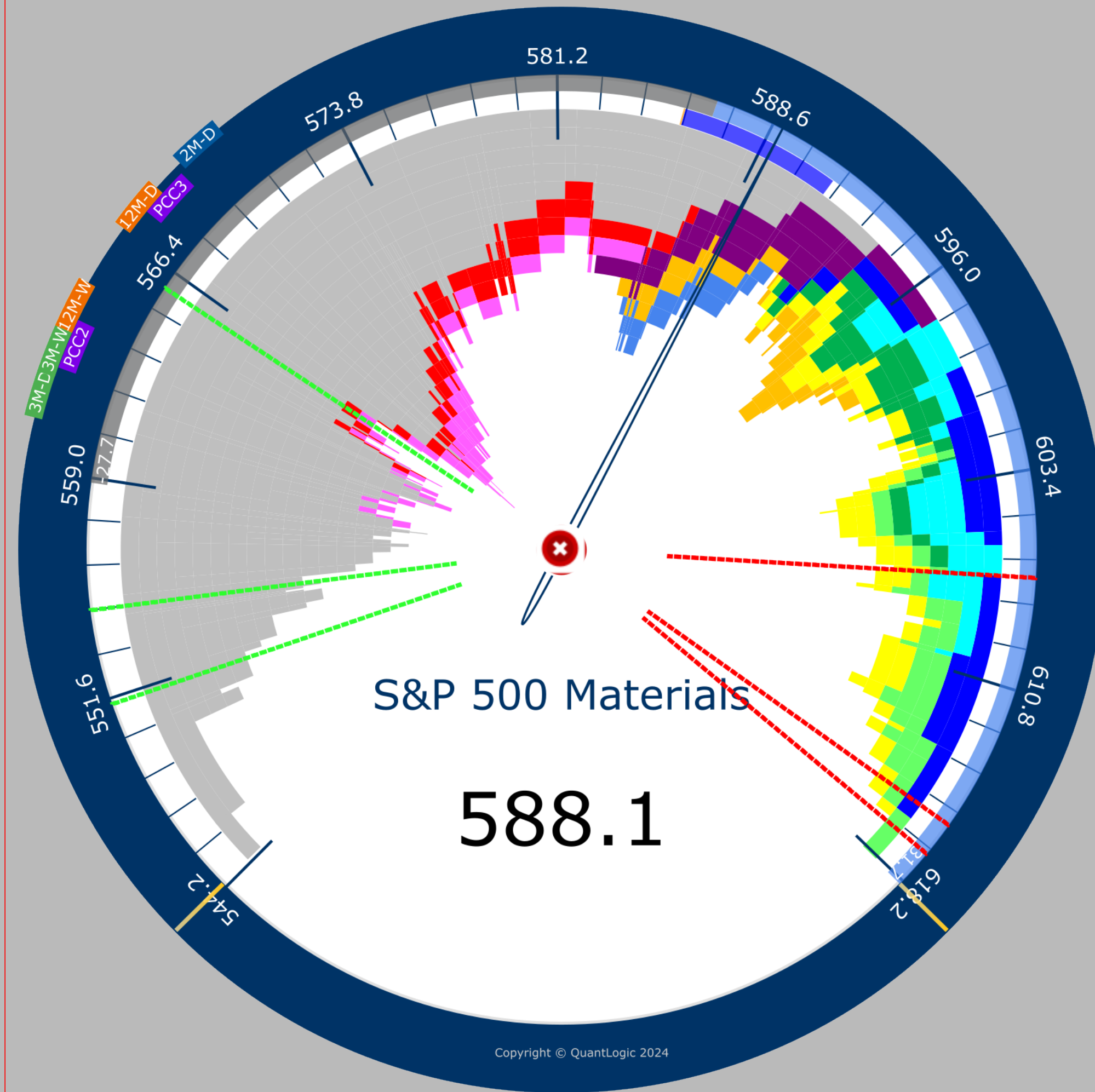
3 Months O: 586.61 H: 618.34 L: 558.84 C: 588.95



01 Sep 2024 - 05 Nov 2024

3 Months Daily Weekly Last 10 3 Months 11/06/24 12:24 AM

6 Months - O: 575.18 H: 618.34 L: 544.34 C: 588.95



01 Jun 2024 - 05 Nov 2024

05 Nov 2024 6 Months Daily 11/06/2024 12:24 AM

Sector Information

- SEC Materials
- IG Materials
- IND Chemicals
- SYM \$SP500_151010

Price Control Point (PCPs)

- | | |
|---|---|
| 2M-D 909 | 3M-D 905.5 |
| 3M-W 905.7 | 6M-D 905.5 |
| 6M-W 905.7 | 12M-D 905.2 |
| 12M-W 905.7 | 24M-W 845.3 |
| 36M-W 845.3 | 48M-W 840.7 |
| 60M-W 840.7 | 72M-W 840.7 |
| 84M-W 840.7 | |

Price Control Cluster (PCCs)

- PCC1 840.6
- PCC2 906.3

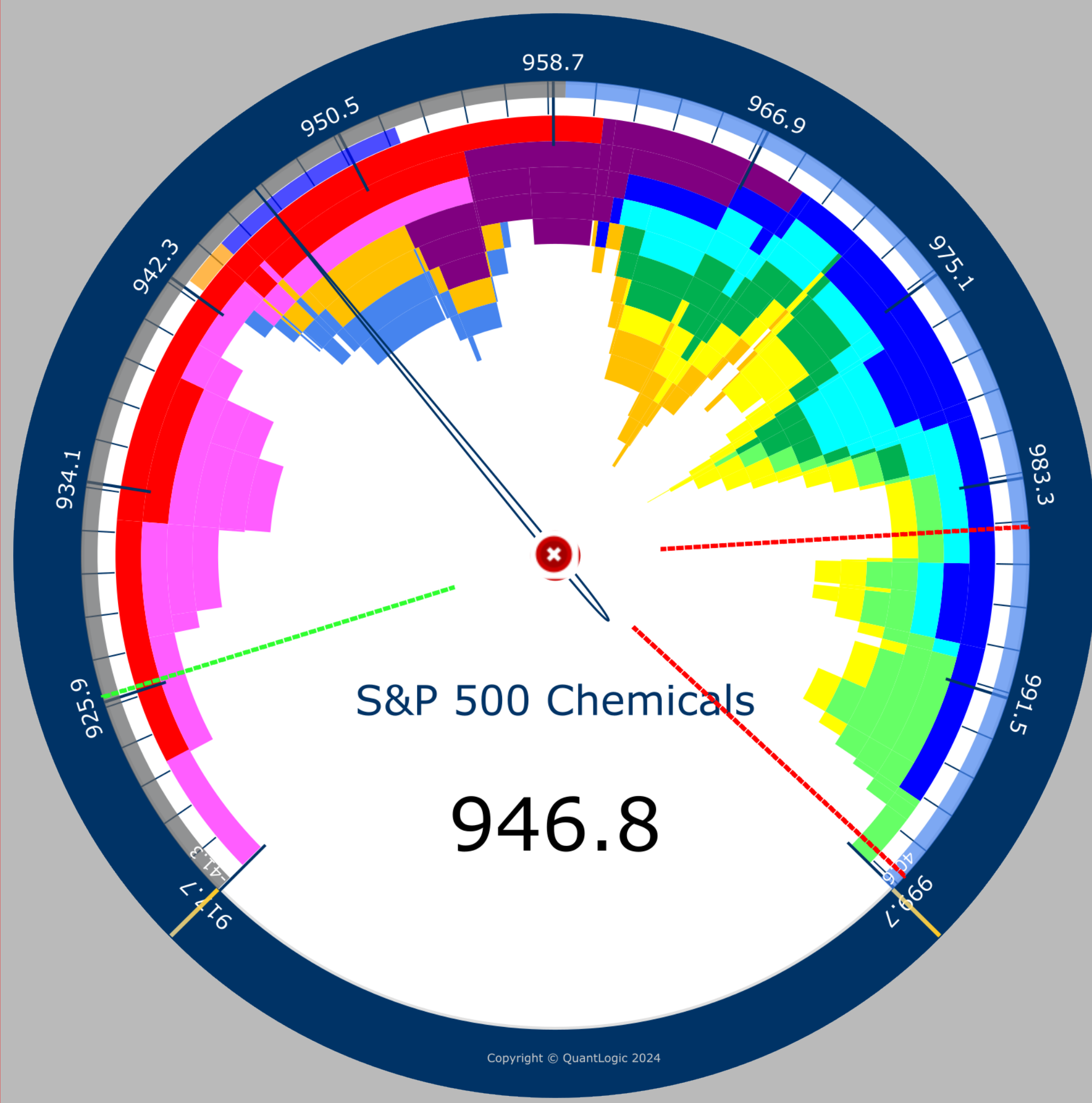
Color Key (Weekly)

- 01 Jun 2024 - 30 Aug 2024 (RHS)
- 06 Sep 2024
- 20 Sep 2024
- 04 Oct 2024
- 18 Oct 2024
- 01 Nov 2024
- 13 Sep 2024
- 27 Sep 2024
- 11 Oct 2024
- 25 Oct 2024
- 08 Nov 2024

3MD Quantlogic Distribution (QD)

- 926.1
- 985.1
- 904.1
- 999.1
- 898.1
- 999.1

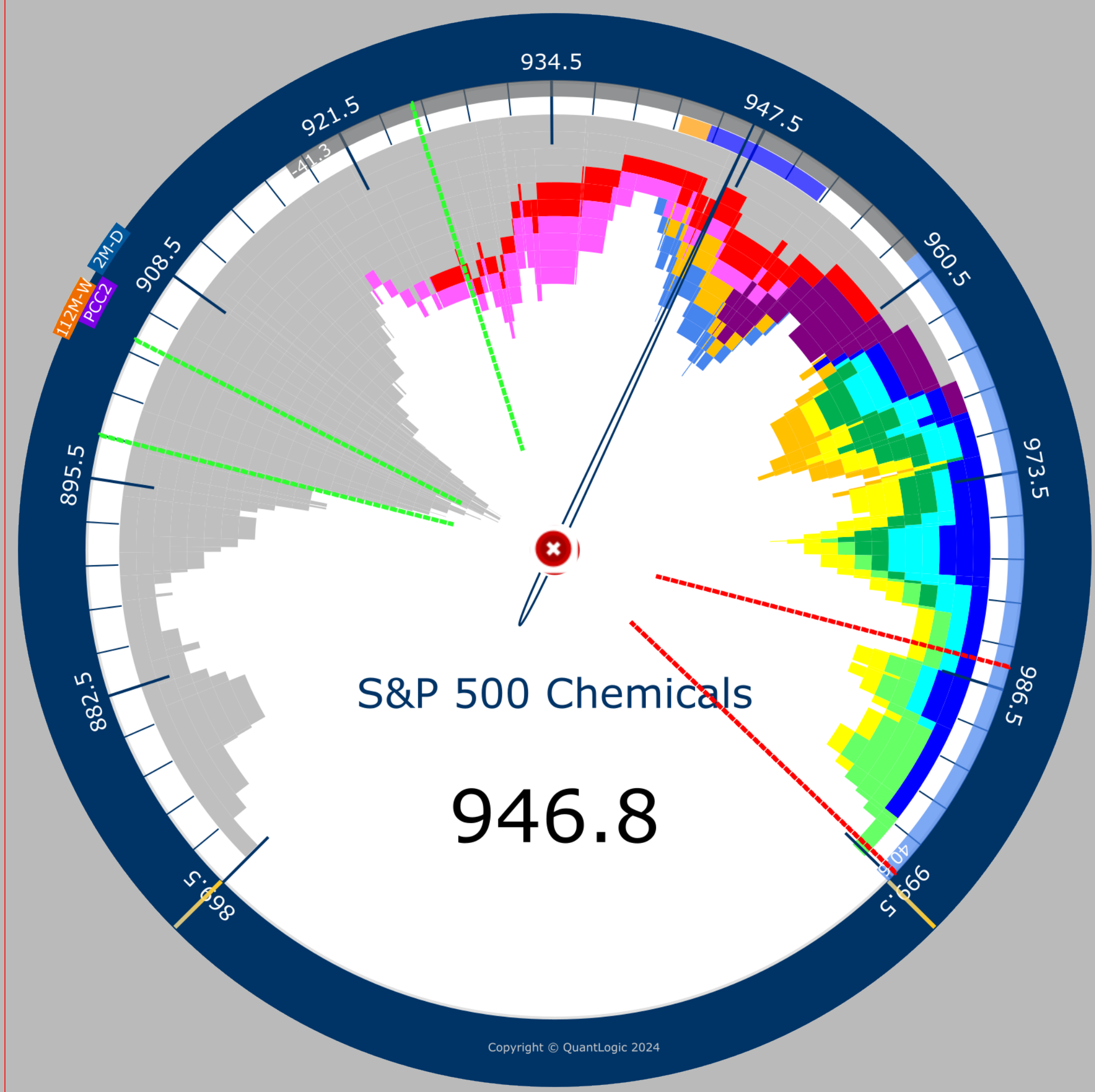
3 Months O: 959.16 H: 999.77 L: 917.78 C: 946.8



01 Sep 2024 - 05 Nov 2024

3 Months Daily Weekly Last 10 3 Months 11/06/24 12:24 AM

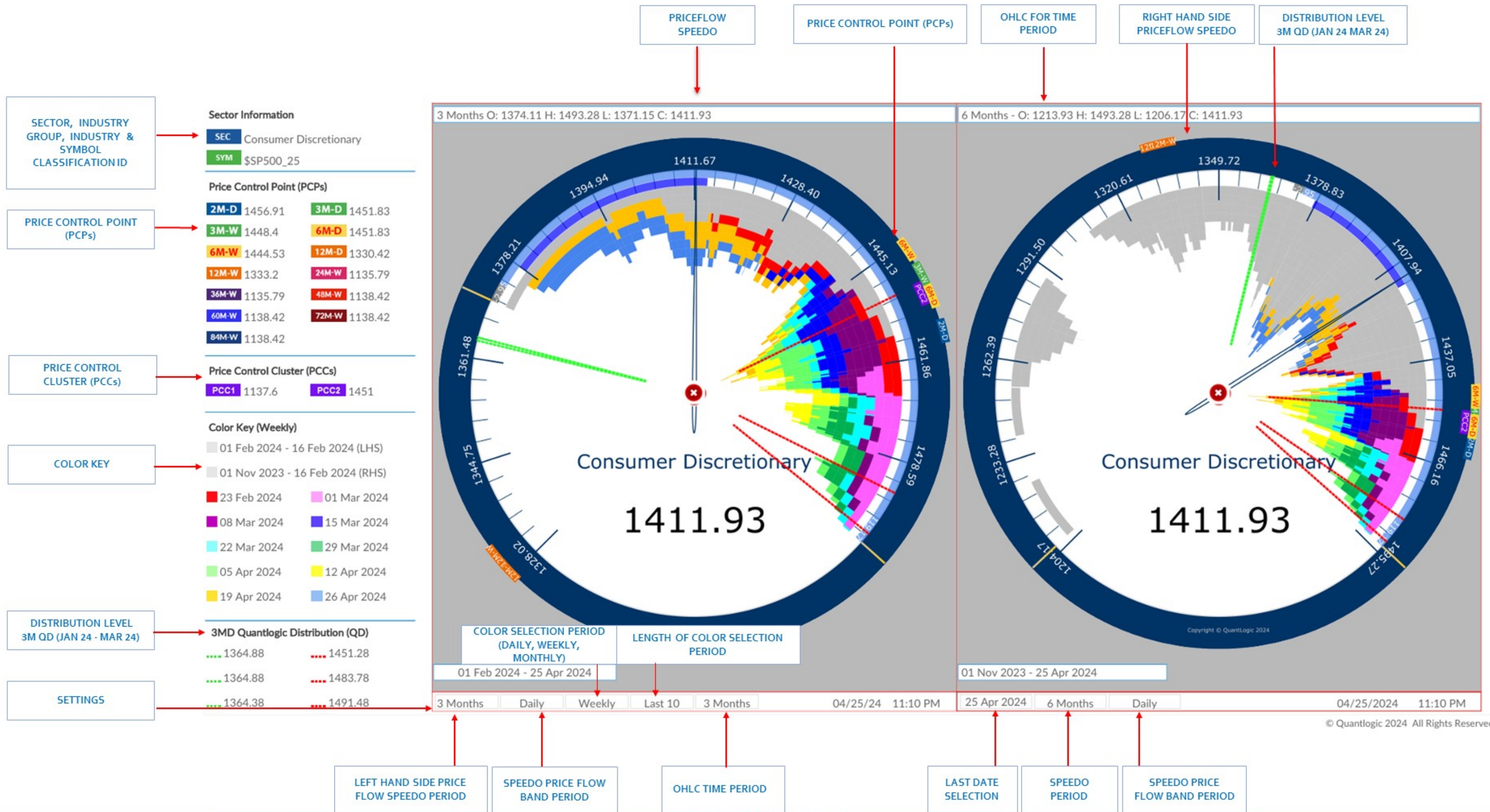
6 Months - O: 911.68 H: 999.77 L: 869.62 C: 946.8



01 Jun 2024 - 05 Nov 2024

05 Nov 2024 6 Months Daily 11/06/2024 12:24 AM

MARKET PRICE FLOW ANALYSIS : 3M DAILY SPEEDO VS 6M DAILY SPEEDO



LEFT HAND SIDE PRICE FLOW SPEEDO PERIOD

SPEEDO PRICE FLOW BAND PERIOD

OHLC TIME PERIOD

LAST DATE SELECTION

SPEEDO PERIOD

SPEEDO PRICE FLOW BAND PERIOD

If you like to discuss Quantlogic Edge further, [Click here to book a Zoom meeting](#)



51 Ashley Gardens, Ambrosden Avenue,
London SW1P 1QF United Kingdom

Website: quantlogic.com

Mail: info@quantlogic.com

Tel: (UK) +44 (0)20 3289 2234

(US) +1 646 374 4234

Research Disclaimer:

Important Disclosure Statement from Quantlogic Ltd



This document is issued by Quantlogic Limited solely for its clients. It is for professional clients only. It may not be reproduced, redistributed or passed to any other person in whole or in part for any purpose without written consent of Quantlogic Ltd. This material is not directed at you if Quantlogic Ltd is prohibited or restricted by any legislation or regulation in any jurisdiction from making it available to you.

This document is provided for information purposes only and should not be regarded as an offer, solicitation, invitation, inducement or recommendation relating to the subscription, purchase or sale of any security or other financial instrument. This document does not constitute, and should not be interpreted as, investment advice. It is accordingly recommended that you should seek independent advice from a suitably qualified professional advisor before taking any decisions in relation to the investments detailed herein. All expressions of opinions and estimates constitute a judgement and, unless otherwise stated, are those of the author and the research department of Quantlogic Ltd only, and are subject to change without notice. Quantlogic Ltd is under no obligation to update the information contained herein. Whilst Quantlogic Ltd has taken all reasonable care to ensure that the information contained in this document is not untrue or misleading at the time of publication, Quantlogic Ltd cannot guarantee its accuracy or completeness, and you should not act on it without first independently verifying its contents. This document is not guaranteed to be a complete statement or summary of any securities, markets, reports or developments referred to herein. No representation or warranty either expressed or implied is made, nor responsibility of any kind is accepted, by Quantlogic Ltd or any of its respective directors, officers, employees or analysts either as to the accuracy or completeness of any information contained in this document nor should it be relied on as such. No liability whatsoever is accepted by Quantlogic Ltd or any of its respective directors, officers, employees or analysts for any loss, whether direct or consequential, arising whether directly or indirectly as a result of the recipient acting on the content of this document, including, without limitation, lost profits arising from the use of this document or any of its contents.

This document is provided with the understanding that Quantlogic Ltd is not acting in a fiduciary capacity and it is not a personal recommendation to you. Investing in securities entails risks. Past performance is not necessarily a guide to future performance. The value of and the income produced by products may fluctuate, so that an investor may get back less than he invested. Investments in the entities and/or the securities or other financial instruments referred to are not suitable for all investors and this document should not be relied upon in substitution for the exercise of independent judgment in relation to any such investment. The stated price of any securities mentioned herein will generally be the closing price at the end of any of the three business days immediately prior to the publication date on this document. This stated price is not a representation that any transaction can be effected at this price.

Quantlogic Ltd and its respective analysts are remunerated for providing investment research to professional investors, corporations, other research institutions and consultancy houses. Quantlogic Ltd, or its respective directors, officers, employees and clients may have or take positions in the securities or entities mentioned in this document. Any of these circumstances could create, or be perceived as creating, conflicts of interest. Quantlogic Ltd analysts are not censored in any way and are free to express their personal opinions. As a result, Quantlogic Ltd may have issued other documents that are inconsistent with and reach different conclusions from, the information contained in this document. Those documents reflect the different assumptions, views and analytical methods of their authors. No director, officer or employee of Quantlogic Ltd is on the board of directors of any company referenced herein and no one at any such referenced company is on the board of directors of Quantlogic Ltd.

Quantlogic Ltd is an appointed representative of Messels Ltd which is authorised and regulated by the Financial Conduct Authority. Residents of the United Kingdom should seek specific professional financial and investment advice from a stockbroker, banker, solicitor, accountant or other independent professional adviser authorised pursuant to the Financial Services and Markets Act 2000.

The content of this report is covered by our Policy of Independence which may be viewed at www.Quantlogic.com

The performance history of research recommendations over the last 12 months is available to clients on request.

Analysts' Certification

The analysts involved in the production of this document hereby certify that the views expressed in this document accurately reflect their personal views about the securities mentioned herein. The analysts point out that they may buy, sell or already have taken positions in the securities, and related financial instruments, mentioned in this document.