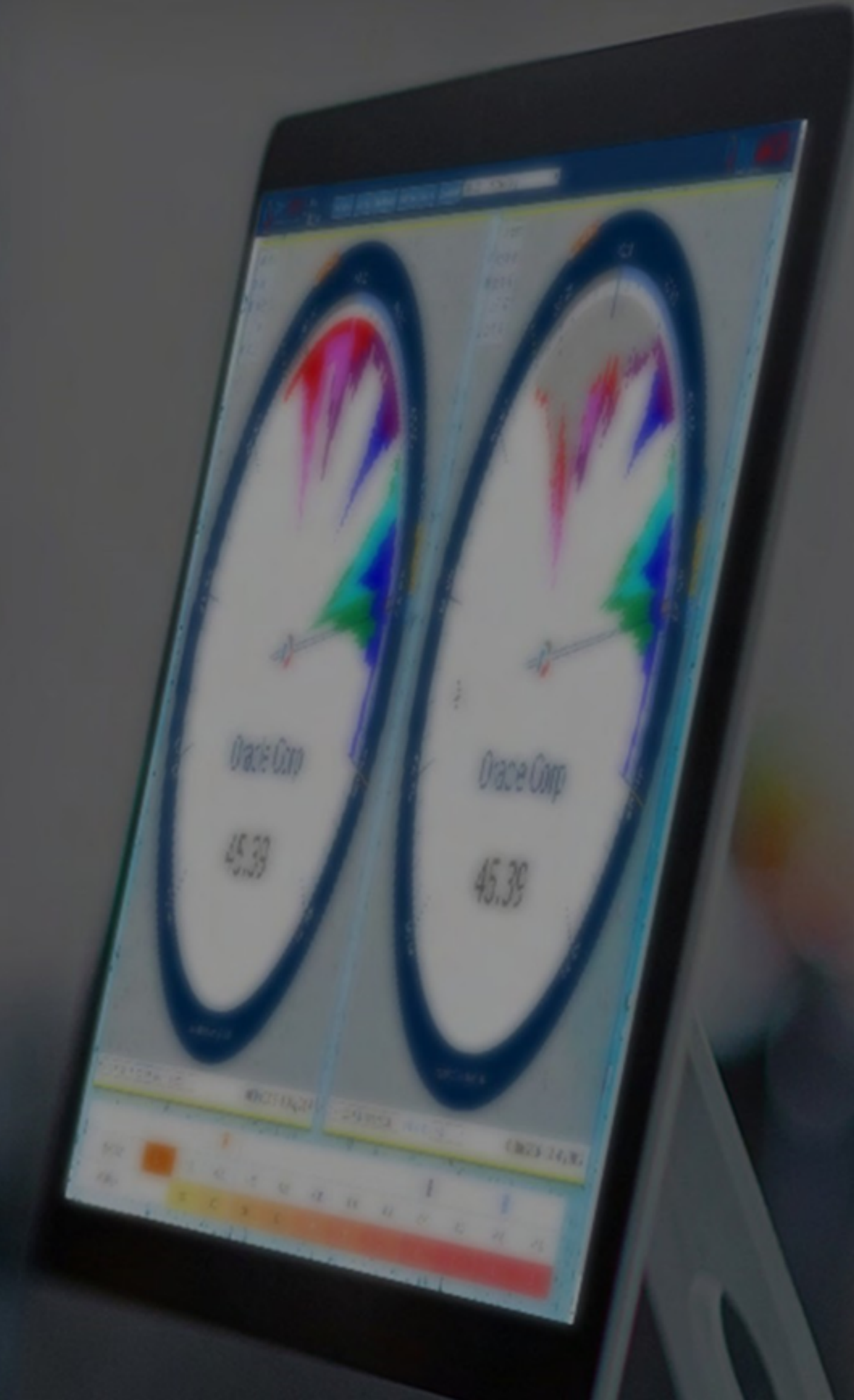




QUANTLOGIC
A quantum leap in equity analysis

Quantlogic Edge Sector Analytics Report

Health Care Sector
Health Care Industry Groups & Industries



Report - 1

Daily Analysis

05 Nov 2024 4:00 PM

Indicator

Sector Analytics

Category

Industry

Speedo Settings

LHS: 2 Months-Daily (Speedo)

RHS: 2 Months-Daily (Chart)

Color Key: Last 6 - Weekly

Sector

Health Care

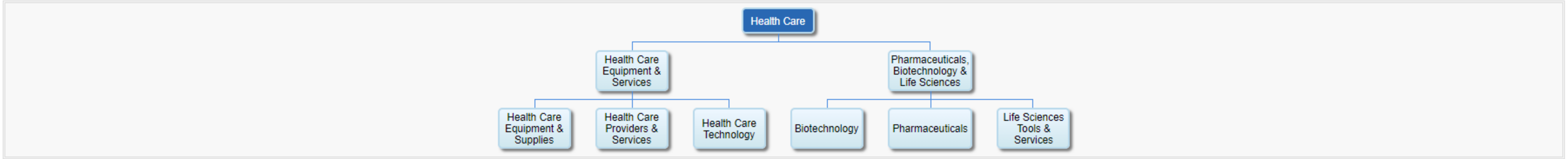
Stock Exchange

New York Stock Exchange (NYSE)

Symbol list

S&P500, Data drawn from 500 Symbols

Sector Classification



Sector Analytics - Relative Performance Analytics

Relative performance of various time periods, Ranging between 1 day and 84 Months.

Sector Health Care **Symbol (Sector)** \$SP500_35 **Market** S&P500

Symbol	Description	Category	Date	Close	Rank#	1D	5D	10D	MTD	1 mos	2 mos	3 mos	6 mos	12 mos	24 mos	36 mos	48 mos	60 mos	72 mos	84 mos
\$SP500_352010	Biotechnology	Industry	11/05/2024	6177.73	1	0.06	-1.01	3.05	0.6	0.54	-7.34	-9.03	-1.99	-11.14	-34.17	12.13	-26.06	-28.8	-41.97	-63.92
\$INX	S&P 500 Index	Index	11/05/2024	5782.76	2	0	0	0	0	0	0	0	0	0	0	0	0	0	0	0
\$SP500_351020	Health Care Providers & Services	Industry	11/05/2024	1666.11	3	-0.04	-0.06	0.75	1.74	-5.23	-13.96	-15.48	-8.4	-28.97	-54.74	-7.43	-19.29	-5.61	-36.01	-11.92
\$SP500_352030	Life Sciences Tools & Services	Industry	11/05/2024	981.84	4	-0.09	2.59	3.7	3.89	-5.32	-9.47	-15.1	-12.93	-10.43	-45.54	-42.77	-61.6	-34.25	-33.36	-12.47
\$SP500_3510	Health Care Equipment & Services	IG	11/05/2024	2016.09	5	-0.34	0.31	0.79	1.32	-1.91	-8.93	-8.59	-6.74	-18.65	-41.28	-18.59	-34.97	-28.84	-40.34	-22.17
\$SP500_35	Health Care	Sector	11/05/2024	1722.74	6	-0.48	-0.7	-0.07	0.37	-3.17	-10.27	-10.13	-7.75	-16.61	-40.26	-13.49	-33.11	-30.35	-45.61	-40.93
\$SP500_3520	Pharmaceuticals, Biotechnology & Life Sc	IG	11/05/2024	1402.59	7	-0.58	-1.43	-0.69	-0.32	-4.07	-11.23	-11.22	-8.48	-15.1	-39.56	-9.51	-32.61	-33.28	-51.52	-55.52
\$SP500_351010	Health Care Equipment & Supplies	Industry	11/05/2024	2342.61	8	-0.63	0.68	0.83	0.92	1.57	-3.42	-0.76	-5.07	-6.04	-22.55	-29.22	-48.92	-48	-45.6	-31.4
\$SP500_352020	Pharmaceuticals	Industry	11/05/2024	1096.09	9	-1.1	-2.97	-4.01	-2.17	-6.02	-13.82	-11.01	-10.14	-18.69	-40.1	-1.75	-19.24	-27.22	-51.62	-49.65
Subsidiary indexes Count		8 / 9	Subsidiary indexes Outperform Count			1	3	5	6	2	0	0	0	0	0	1	0	0	0	0

2 Months O: 6235.47 H: 6241.46 L: 5977.98 C: 6177.73

2 Months - O: 6235.47 H: 6241.46 L: 5977.98 C: 6177.73

Sector Information

- SEC Health Care
- IG Pharmaceuticals, Biotechnology & Life Sciences
- IND Biotechnology
- SYM \$SP500_352010

Price Control Point (PCPs)

- 2M-D 6081.3
- 3M-D 5845.7
- 3M-W 5873
- 6M-D 5722
- 6M-W 5682.7
- 12M-D 5734.4
- 12M-W 5700.4
- 24M-W 5129.6
- 36M-W 4763.6
- 48M-W 4762.1
- 60M-W 4621.2
- 72M-W 4621.2
- 84M-W 4621.2

Price Control Cluster (PCCs)

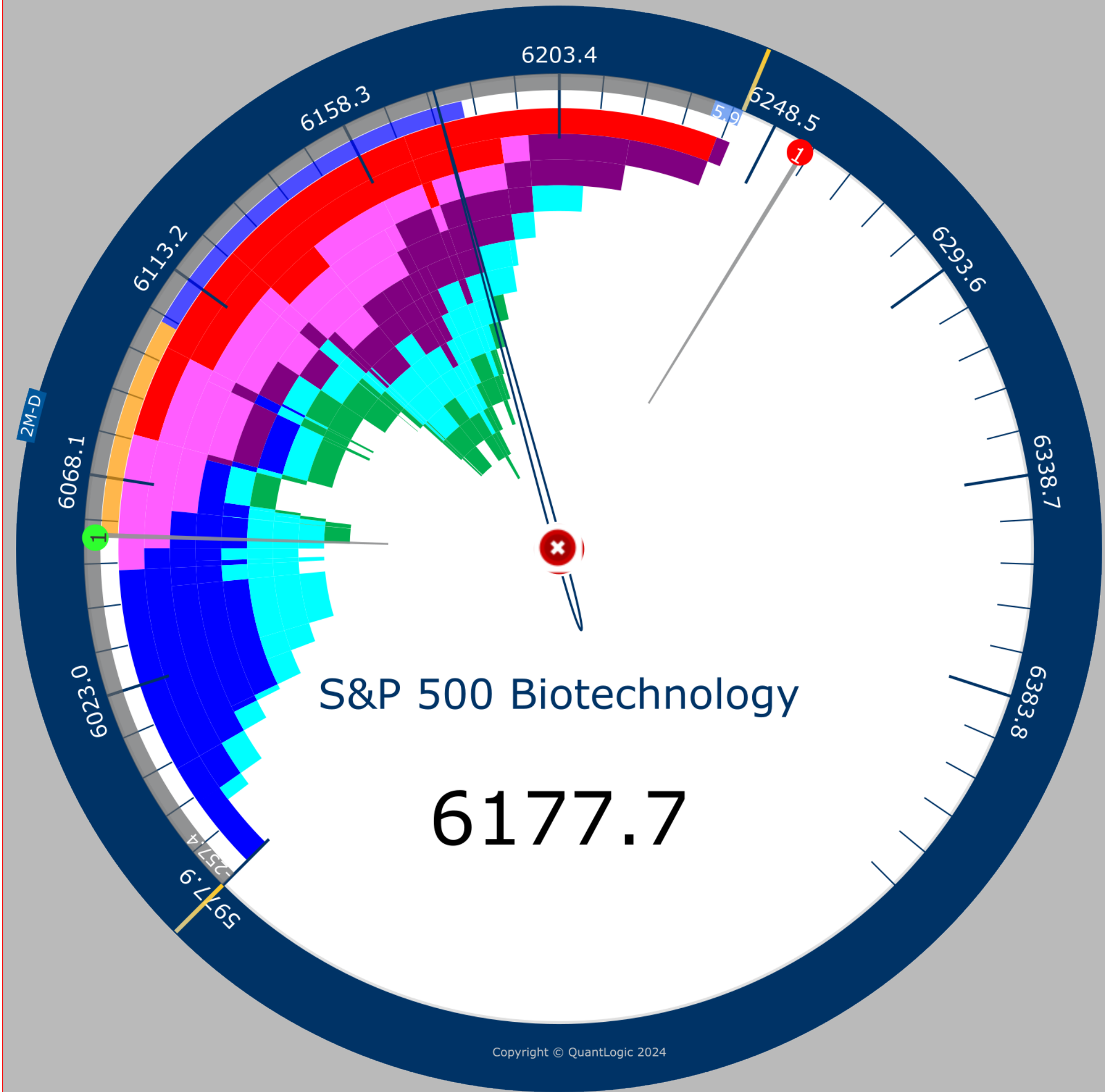
- PCC1 4621.3
- PCC2 5709.9

Color Key (Weekly)

- 11 Oct 2024
- 18 Oct 2024
- 25 Oct 2024
- 01 Nov 2024
- 08 Nov 2024

S&R: Monthly levels

- 1 6255.6
- 2 6454.8
- 3 6654
- 1 6056.4
- 2 5857.2
- 3 5658



01 Oct 2024 - 05 Nov 2024

2 Months Daily Weekly Last 6 2 Months 11/06/24 12:27 AM

S&P 500 Biotechnology [Daily]

S&R: Monthly Level



05 Nov 2024 2 Months Daily 11/06/2024 12:27 AM

2 Months O: 5757.73 H: 5878.46 L: 5674 C: 5782.76

2 Months - O: 5757.73 H: 5878.46 L: 5674 C: 5782.76

Sector Information

SEC -

IG -

SYM \$INX

Price Control Point (PCPs)

2M-D 5832.2 3M-D 5714.9

3M-W 5718.2 6M-D 5472.1

6M-W 5501.3 12M-D 5472.1

12M-W 5501.3 24M-W 4133.1

36M-W 3958 48M-W 4451.8

60M-W 4451.8 72M-W 4451.8

84M-W 2730.9

Price Control Cluster (PCCs)

PCC1 4451.9 PCC2 5721.9

Color Key (Weekly)

11 Oct 2024 18 Oct 2024

25 Oct 2024 01 Nov 2024

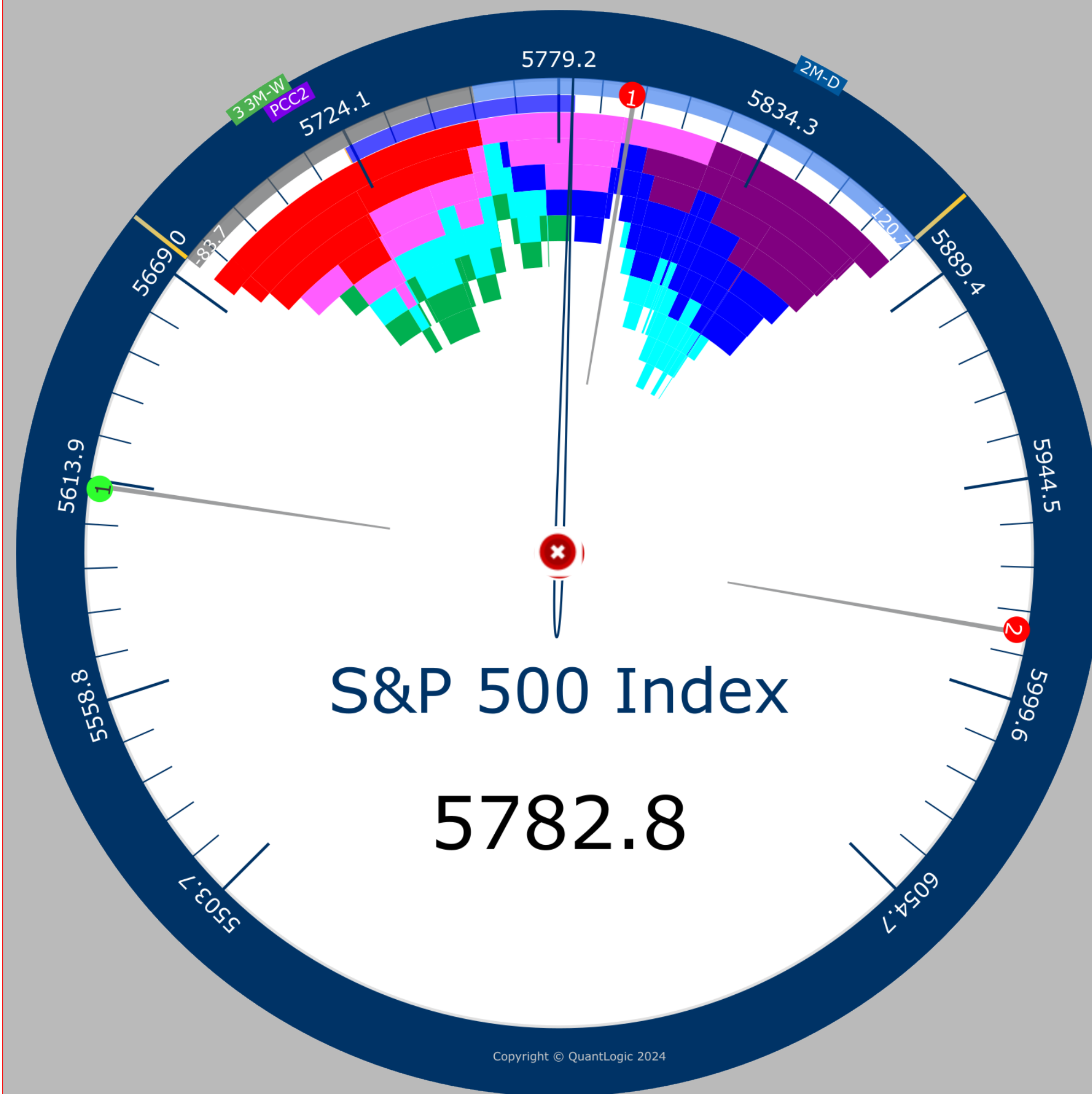
08 Nov 2024

S&R: Monthly levels

1 5797.8 2 5982.4

3 6167 1 5613.1

2 5428.5 3 5243.9



S&P 500 Index [Daily]

S&R: Monthly Level



2 Months

Daily

Weekly

Last 6

2 Months

11/06/24 12:23 AM

05 Nov 2024

2 Months

Daily

11/06/2024 12:23 AM

2 Months O: 1775.86 H: 1800.7 L: 1639.6 C: 1666.11

2 Months - O: 1775.86 H: 1800.7 L: 1639.6 C: 1666.11

Sector Information

- SEC Health Care
- IG Health Care Equipment & Services
- IND Health Care Providers & Services
- SYM \$SP500_351020

Price Control Point (PCPs)

- 2M-D 1764.3
- 3M-D 1632.3
- 3M-W 1644.1
- 6M-D 1631.1
- 6M-W 1630.2
- 12M-D 1631.6
- 12M-W 1628.8
- 24M-W 1628.8
- 36M-W 1583.2
- 48M-W 1583.2
- 60M-W 1583.3
- 72M-W 1583.2
- 84M-W 1583.3

Price Control Cluster (PCCs)

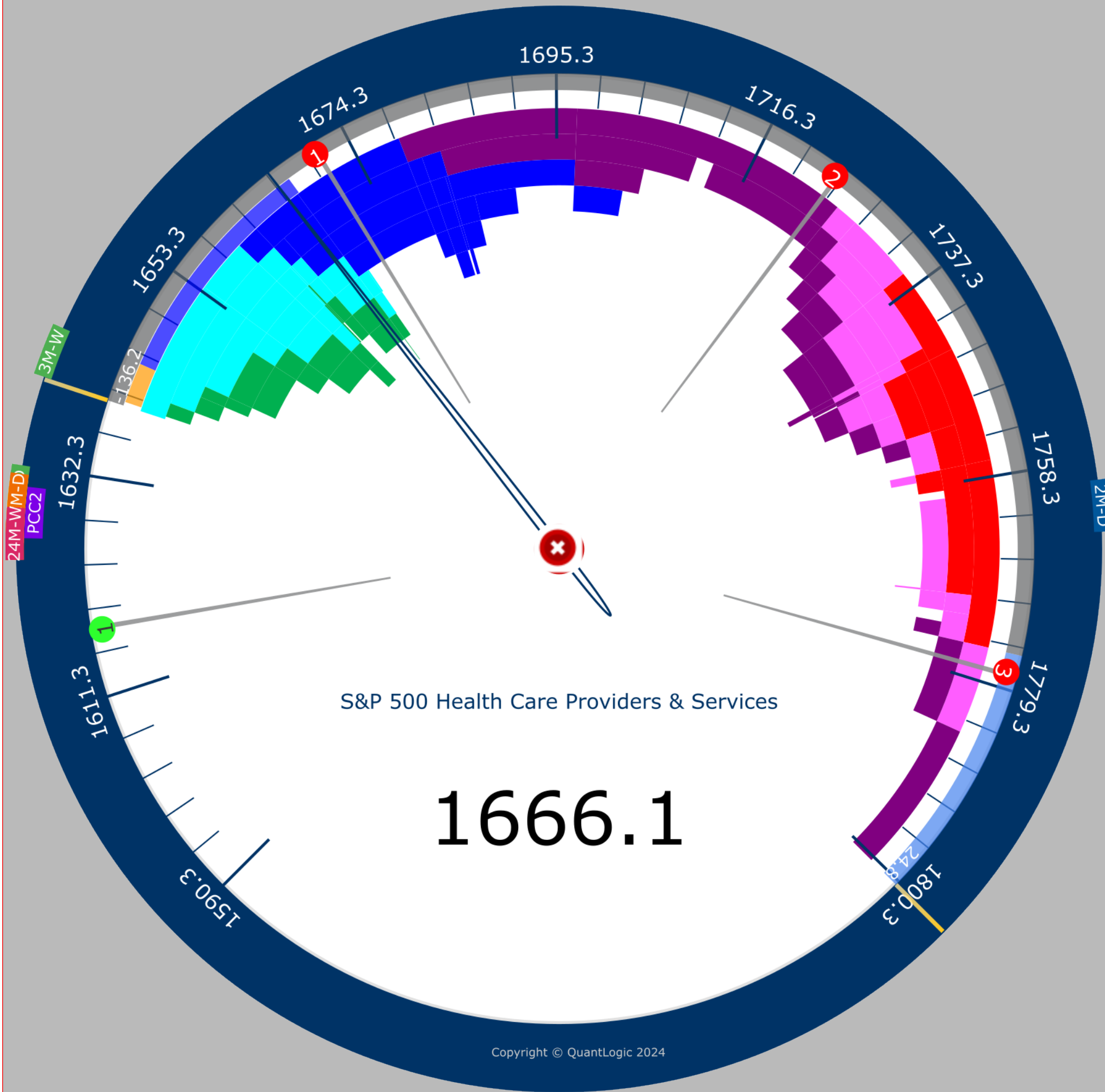
- PCC1 1583.3
- PCC2 1630.6

Color Key (Weekly)

- 11 Oct 2024
- 18 Oct 2024
- 25 Oct 2024
- 01 Nov 2024
- 08 Nov 2024

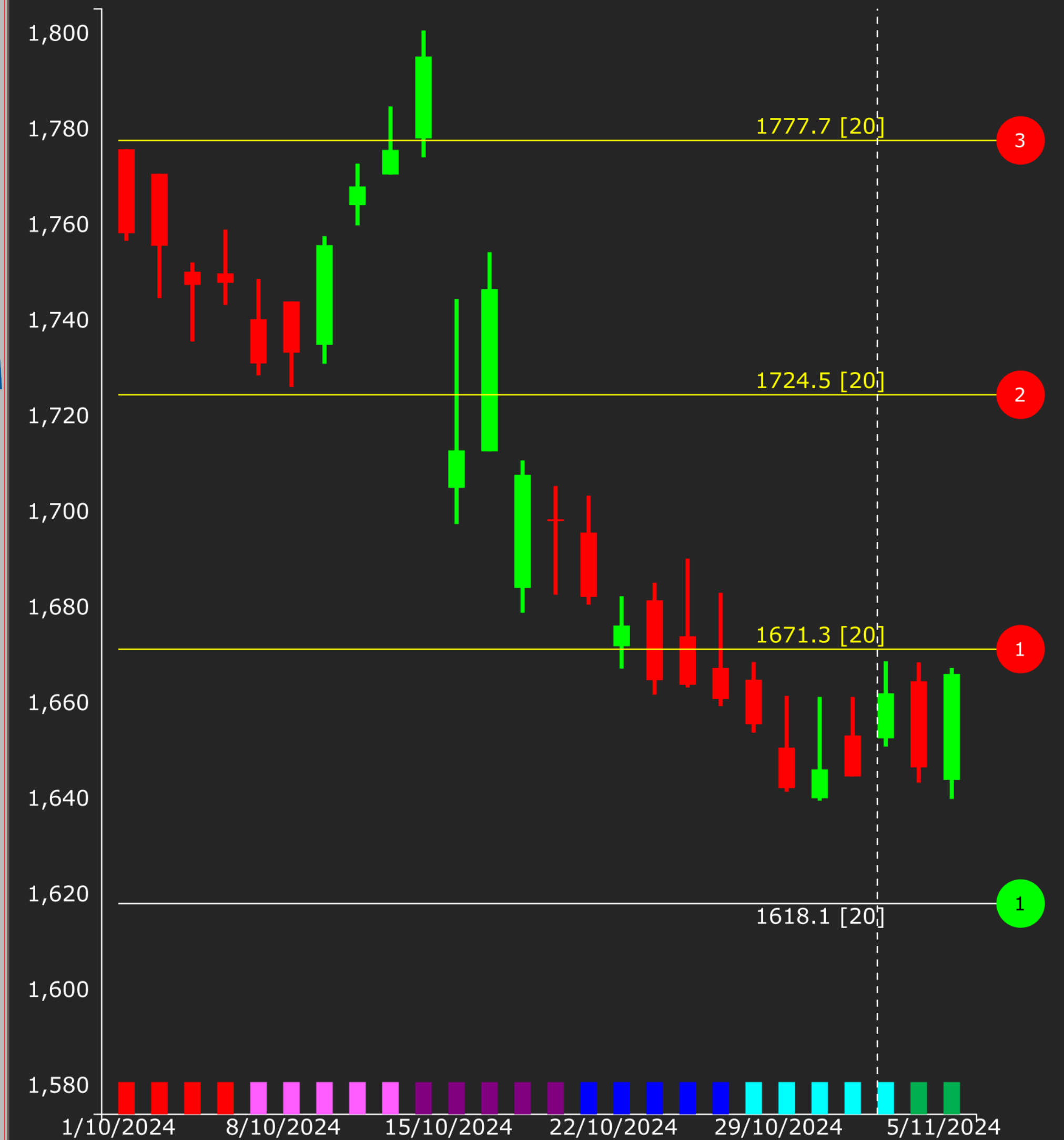
S&R: Monthly levels

- 1 1671.3
- 2 1724.5
- 3 1777.7
- 1 1618.1
- 2 1564.8
- 3 1511.6



S&P 500 Health Care Providers & Services [Daily]

S&R: Monthly Level



2 Months Daily Weekly Last 6 2 Months 11/06/24 12:27 AM

05 Nov 2024 2 Months Daily 11/06/2024 12:27 AM

2 Months O: 1059.77 H: 1060.87 L: 941.01 C: 981.84

2 Months - O: 1059.77 H: 1060.87 L: 941.01 C: 981.84

Sector Information

- SEC** Health Care
- IG** Pharmaceuticals, Biotechnology & Life Sciences
- IND** Life Sciences Tools & Services
- SYM** \$SP500_352030

Price Control Point (PCPs)

- | | |
|--------------------|--------------------|
| 2M-D 1028.7 | 3M-D 1028.7 |
| 3M-W 981.1 | 6M-D 1018.8 |
| 6M-W 1015.2 | 12M-D 977.7 |
| 12M-W 961.7 | 24M-W 962.8 |
| 36M-W 962.5 | 48M-W 980.4 |
| 60M-W 980.4 | 72M-W 980.4 |
| 84M-W 980.4 | |

Price Control Cluster (PCCs)

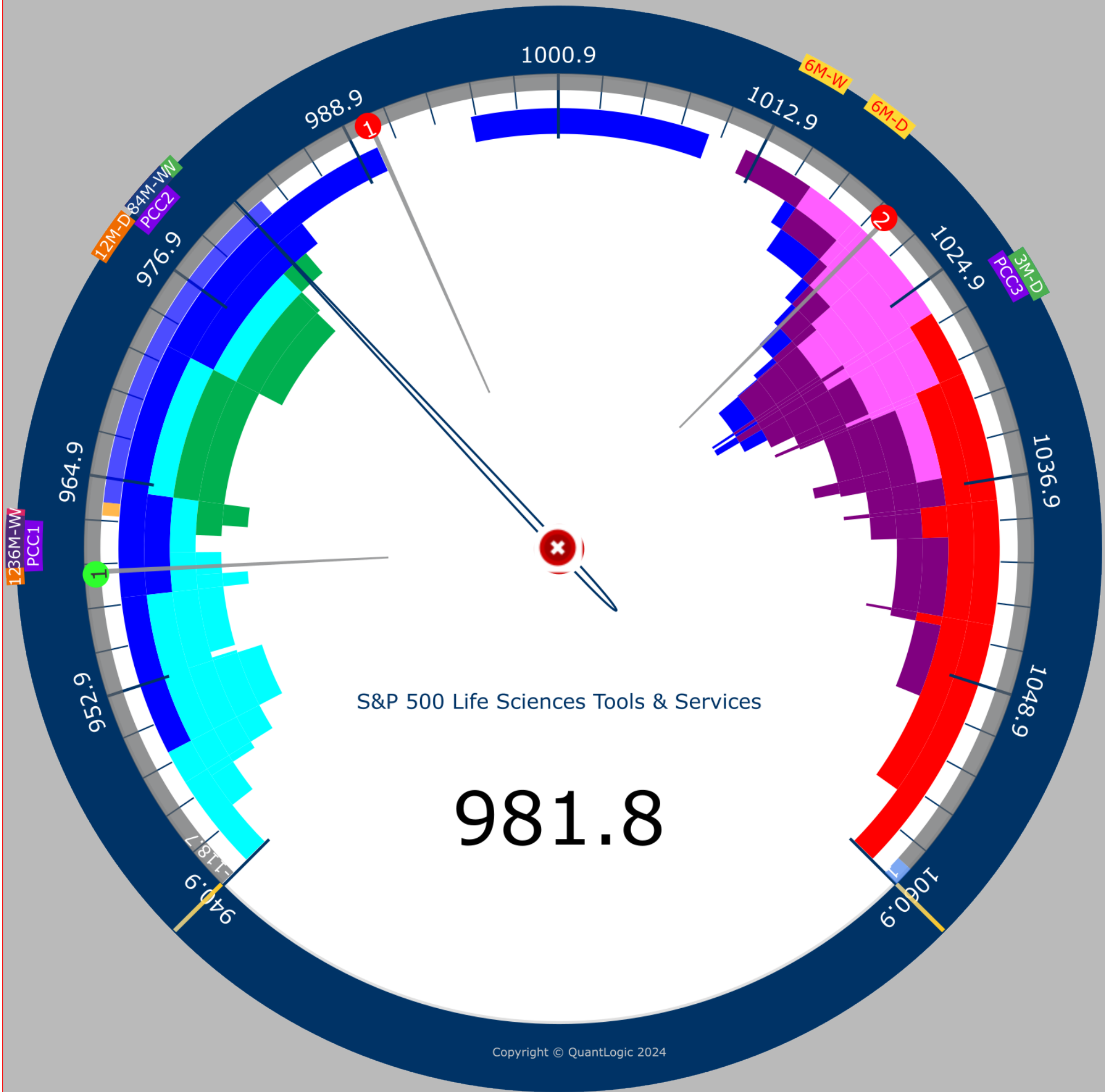
- PCC1** 962.3
- PCC2** 980
- PCC3** 1028.3

Color Key (Weekly)

- 11 Oct 2024
- 18 Oct 2024
- 25 Oct 2024
- 01 Nov 2024
- 08 Nov 2024

S&R: Monthly levels

- 1** 990.4
- 2** 1021
- 1** 959.8
- 2** 929.3
- 3** 898.7
- 4** 868.1



S&P 500 Life Sciences Tools & Services [Daily]

S&R: Monthly Level



2 Months Daily Weekly Last 6 2 Months 11/06/24 12:27 AM

05 Nov 2024 2 Months Daily 11/06/2024 12:27 AM

2 Months O: 2081.88 H: 2096.9 L: 1982.91 C: 2016.09

2 Months - O: 2081.88 H: 2096.9 L: 1982.91 C: 2016.09

Sector Information

SEC Health Care
IG Health Care Equipment & Services
SYM \$SP500_3510

Price Control Point (PCPs)

2M-D 1986 3M-D 1986
3M-W 1934.8 6M-D 1933.6
6M-W 1938.7 12M-D 1921.1
12M-W 1920.9 24M-W 1825
36M-W 1825.3 48M-W 1825.1
60M-W 1825.1 72M-W 1825.1
84M-W 1825.1

Price Control Cluster (PCCs)

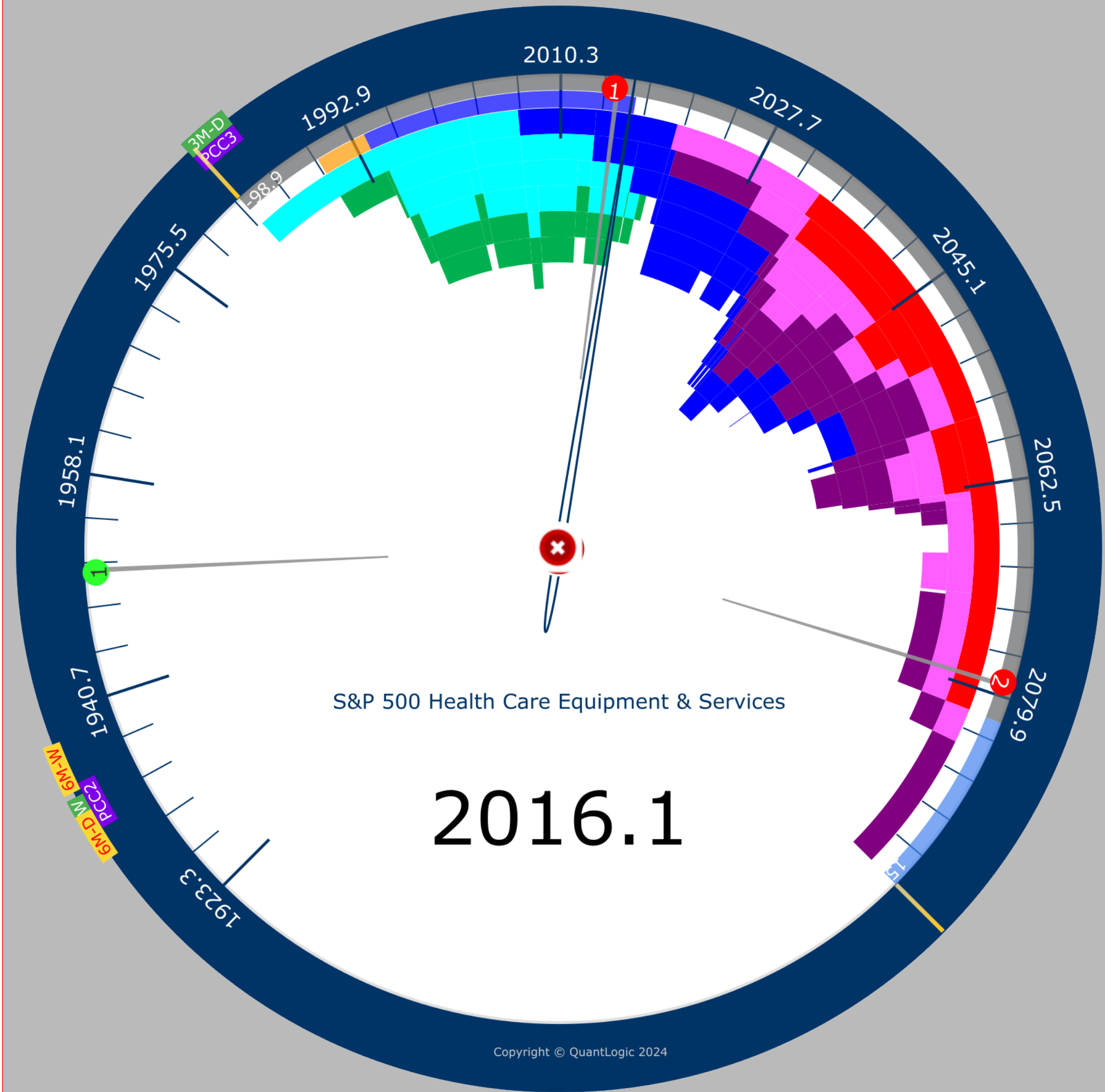
PCC1 1825 PCC2 1935.6
PCC3 1986

Color Key (Weekly)

11 Oct 2024 18 Oct 2024
25 Oct 2024 01 Nov 2024
08 Nov 2024

S&R: Monthly levels

1 2015 2 2079.2
3 2143.3 1 1950.8
2 1886.7 3 1822.5



01 Oct 2024 - 05 Nov 2024

2 Months Daily Weekly Last 6 2 Months 11/06/24 12:27 AM



05 Nov 2024 2 Months Daily 11/06/2024 12:27 AM

2 Months O: 1477.48 H: 1488.09 L: 1373.8 C: 1402.59

2 Months - O: 1477.48 H: 1488.09 L: 1373.8 C: 1402.59

Sector Information

SEC Health Care
IG Pharmaceuticals, Biotechnology & Life Sciences
SYM \$SP500_3520

Price Control Point (PCPs)

2M-D 1450.7 3M-D 1407.9
3M-W 1415.9 6M-D 1394.6
6M-W 1401.1 12M-D 1394.8
12M-W 1401.1 24M-W 1207.9
36M-W 1229.7 48M-W 1229.7
60M-W 1229.7 72M-W 1229.7
84M-W 1229.7

Price Control Cluster (PCCs)

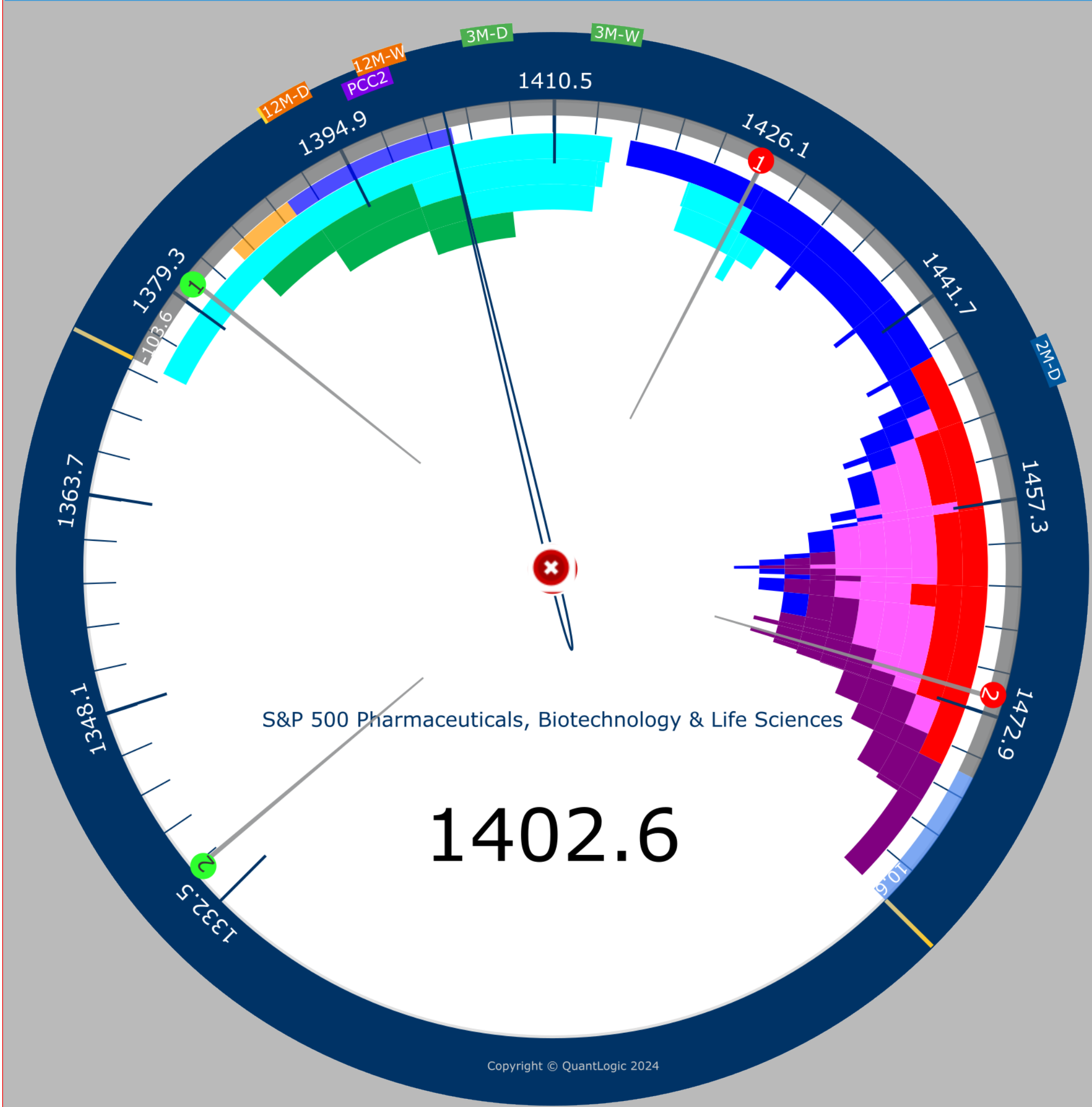
PCC1 1229.6 PCC2 1399.9

Color Key (Weekly)

11 Oct 2024 18 Oct 2024
25 Oct 2024 01 Nov 2024
08 Nov 2024

S&R: Monthly levels

1 1426.3 2 1471.8
3 1517.2 1 1380.9
2 1335.5 3 1290.1



01 Oct 2024 - 05 Nov 2024

2 Months Daily Weekly Last 6 2 Months 11/06/24 12:27 AM

S&P 500 Pharmaceuticals, Biotechnology & Life Science
S&R: Monthly Level



05 Nov 2024 2 Months Daily 11/06/2024 12:27 AM

2 Months O: 2342.71 H: 2397.16 L: 2265.87 C: 2342.61

2 Months - O: 2342.71 H: 2397.16 L: 2265.87 C: 2342.61

Sector Information

- SEC Health Care
- IG Health Care Equipment & Services
- IND Health Care Equipment & Supplies
- SYM \$SP500_351010

Price Control Point (PCPs)

- 2M-D 2180.6
- 3M-D 2194.2
- 3M-W 2186.5
- 6M-D 2183.3
- 6M-W 2189.6
- 12M-D 2183.3
- 12M-W 2186.5
- 24M-W 2185.6
- 36M-W 2185.6
- 48M-W 2201.6
- 60M-W 2201.6
- 72M-W 2201.6
- 84M-W 2201.6

Price Control Cluster (PCCs)

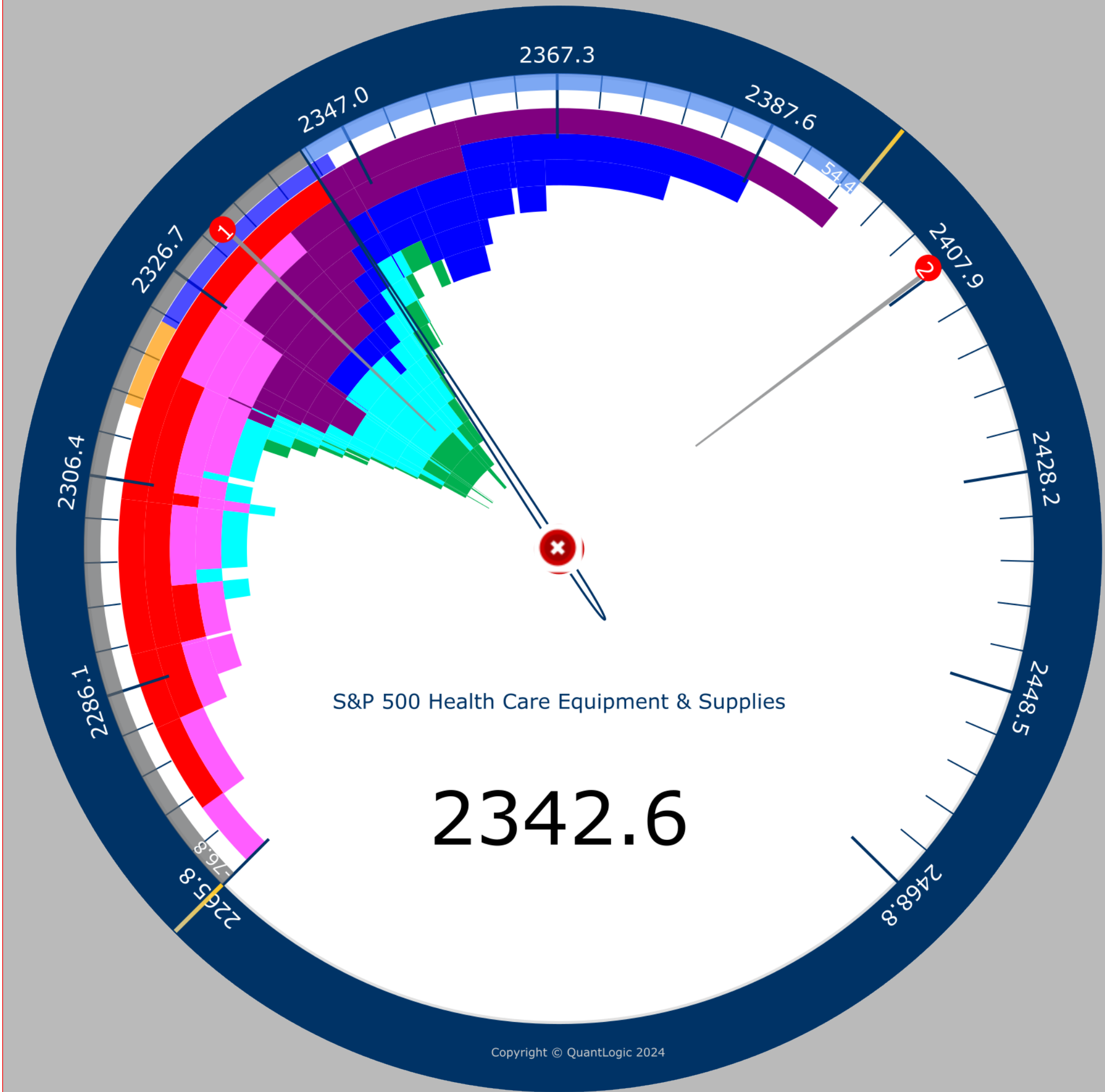
- PCC1 2190.3

Color Key (Weekly)

- 11 Oct 2024
- 18 Oct 2024
- 25 Oct 2024
- 01 Nov 2024
- 08 Nov 2024

S&R: Monthly levels

- 1 2332.9
- 2 2407.2
- 3 2481.5
- 1 2258.6
- 2 2184.3
- 3 2110.1

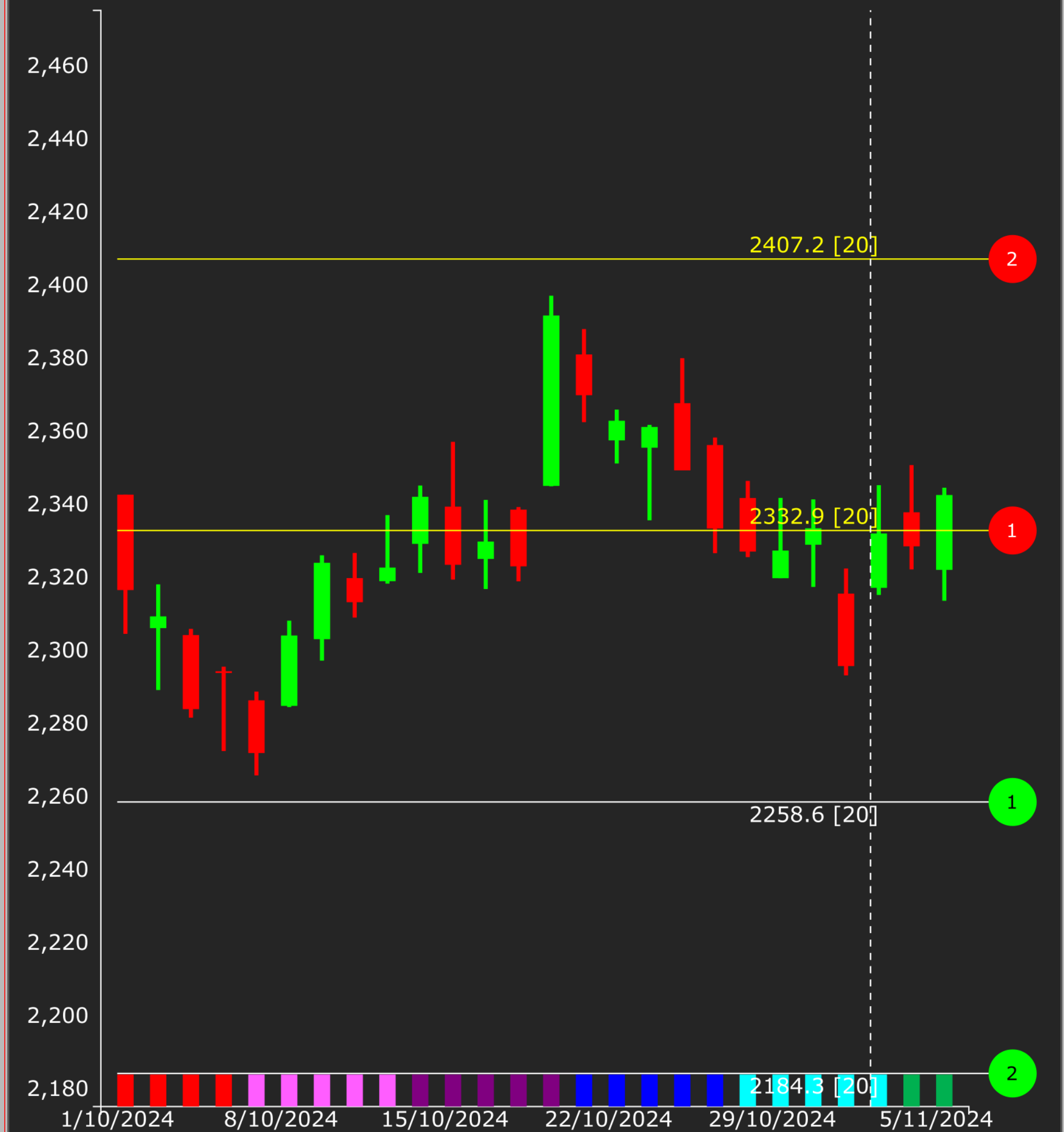


01 Oct 2024 - 05 Nov 2024

2 Months Daily Weekly Last 6 2 Months 11/06/24 12:27 AM

S&P 500 Health Care Equipment & Supplies [Daily]

S&R: Monthly Level



05 Nov 2024 2 Months Daily 11/06/2024 12:27 AM

Sector Information

- SEC Health Care
- IG Pharmaceuticals, Biotechnology & Life Sciences
- IND Pharmaceuticals
- SYM \$SP500_352020

Price Control Point (PCPs)

2M-D 1151.7	3M-D 1151.7
3M-W 1151.8	6M-D 1105.5
6M-W 1105.5	12M-D 974.8
12M-W 1105.5	24M-W 966.7
36M-W 975.4	48M-W 975.4
60M-W 975.4	72M-W 975.4
84M-W 975.4	

Price Control Cluster (PCCs)

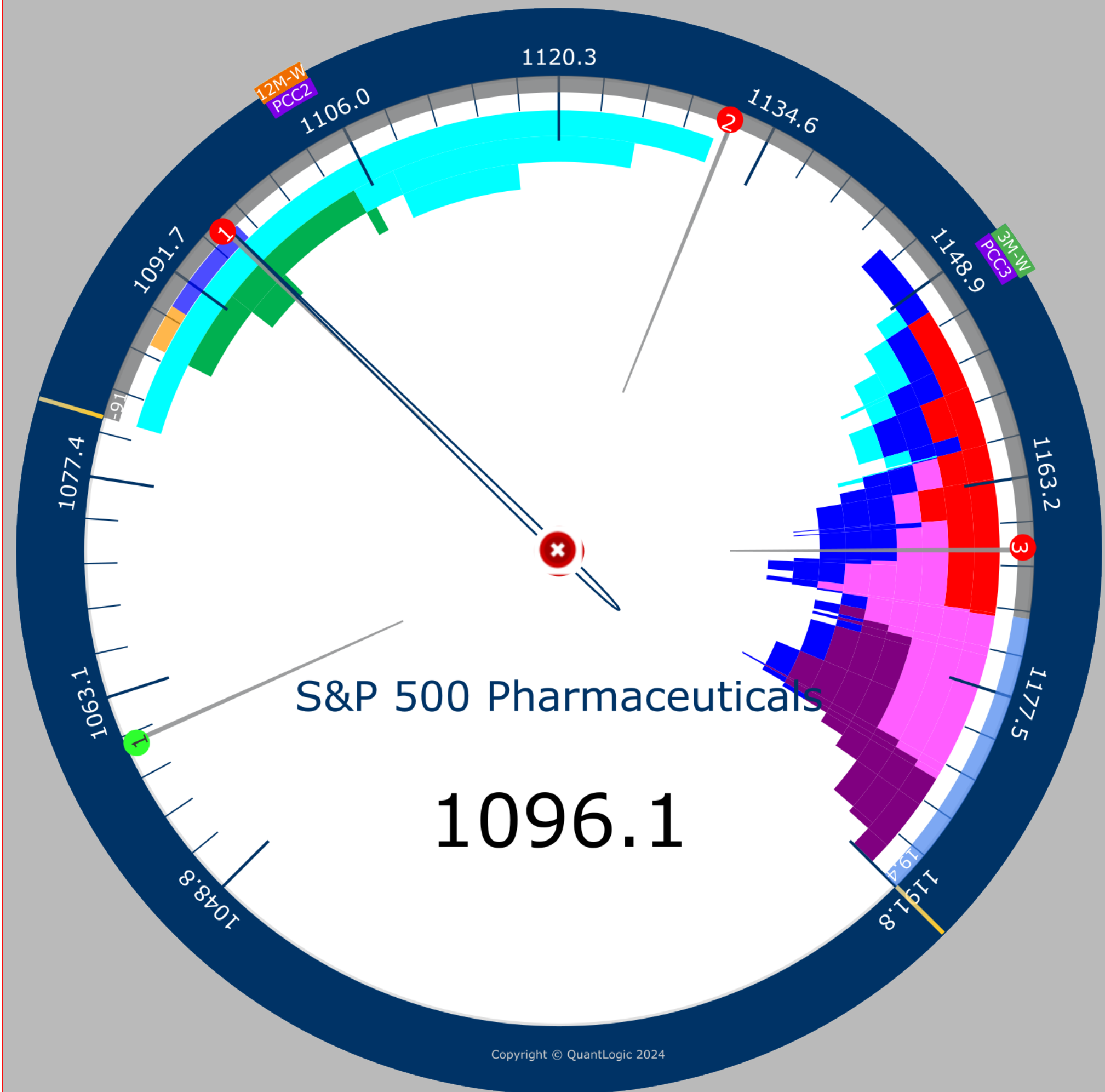
PCC1 975.3	PCC2 1105.6
PCC3 1151.6	

Color Key (Weekly)

■ 11 Oct 2024	■ 18 Oct 2024
■ 25 Oct 2024	■ 01 Nov 2024
■ 08 Nov 2024	

S&R: Monthly levels

1 1096	2 1132.1
3 1168.1	4 1204.2
1 1060	2 1023.9

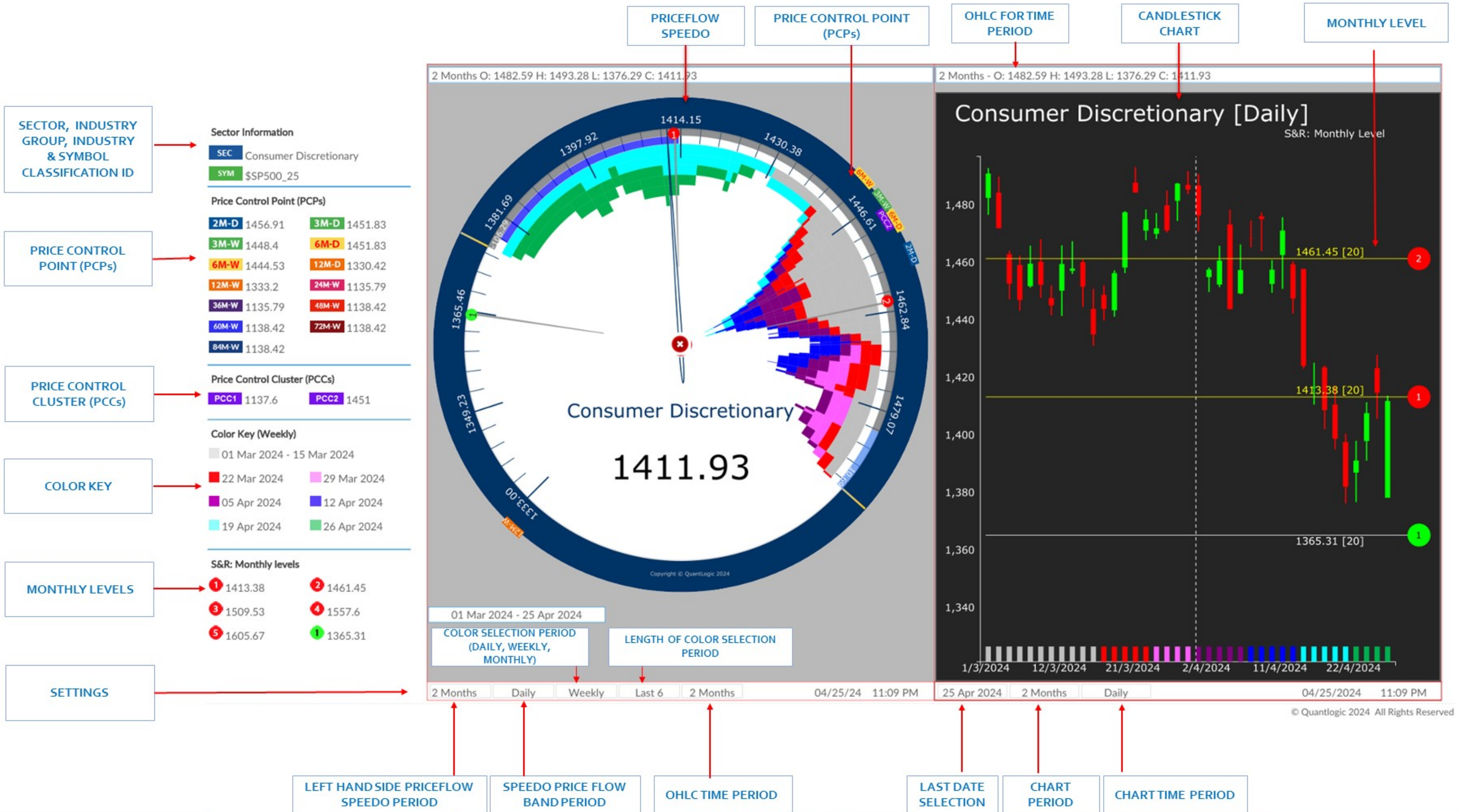


S&P 500 Pharmaceuticals [Daily]

S&R: Monthly Level



MARKET PRICE FLOW ANALYSIS : 2M DAILY SPEEDO VS 2M DAILY CANDLESTICK CHART



SECTOR, INDUSTRY GROUP, INDUSTRY & SYMBOL CLASSIFICATION ID

Sector Information
 SEC Consumer Discretionary
 SYM \$SP500_25

PRICE CONTROL POINT (PCPs)

Price Control Point (PCPs)

2M-D	1456.91	3M-D	1451.83
3M-W	1448.4	6M-D	1451.83
6M-W	1444.53	12M-D	1330.42
12M-W	1333.2	24M-W	1135.79
36M-W	1135.79	48M-W	1138.42
60M-W	1138.42	72M-W	1138.42
84M-W	1138.42		

PRICE CONTROL CLUSTER (PCCs)

Price Control Cluster (PCCs)
 PCC1 1137.6 PCC2 1451

COLOR KEY

Color Key (Weekly)

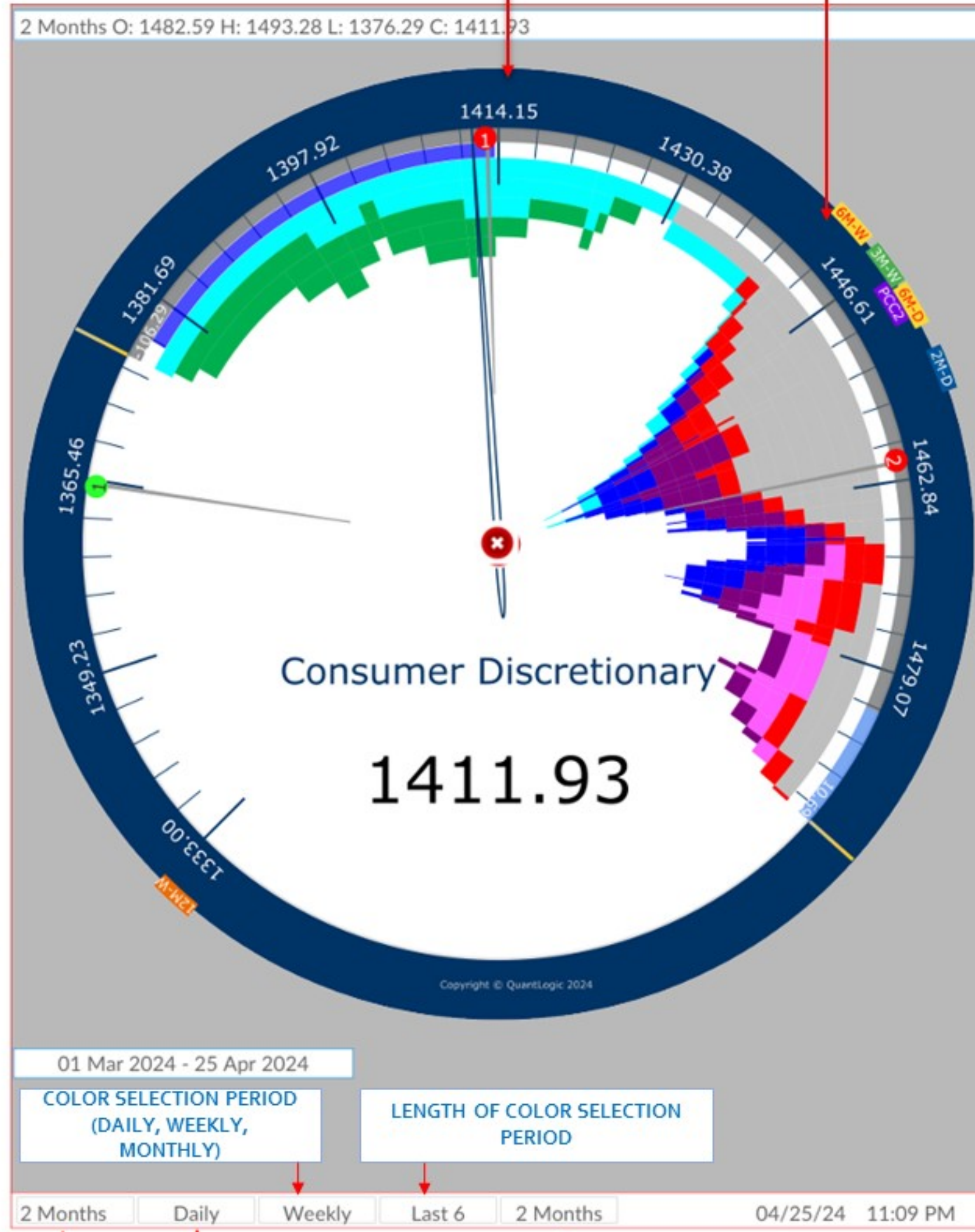
01 Mar 2024 - 15 Mar 2024	
22 Mar 2024	29 Mar 2024
05 Apr 2024	12 Apr 2024
19 Apr 2024	26 Apr 2024

MONTHLY LEVELS

S&R: Monthly levels

1 1413.38	2 1461.45
3 1509.53	4 1557.6
5 1605.67	1 1365.31

SETTINGS



If you like to discuss Quantlogic Edge further, [Click here to book a Zoom meeting](#)



51 Ashley Gardens, Ambrosden Avenue,
London SW1P 1QF United Kingdom

Website: quantlogic.com

Mail: info@quantlogic.com

Tel: (UK) +44 (0)20 3289 2234

(US) +1 646 374 4234

Research Disclaimer:

Important Disclosure Statement from Quantlogic Ltd



This document is issued by Quantlogic Limited solely for its clients. It is for professional clients only. It may not be reproduced, redistributed or passed to any other person in whole or in part for any purpose without written consent of Quantlogic Ltd. This material is not directed at you if Quantlogic Ltd is prohibited or restricted by any legislation or regulation in any jurisdiction from making it available to you.

This document is provided for information purposes only and should not be regarded as an offer, solicitation, invitation, inducement or recommendation relating to the subscription, purchase or sale of any security or other financial instrument. This document does not constitute, and should not be interpreted as, investment advice. It is accordingly recommended that you should seek independent advice from a suitably qualified professional advisor before taking any decisions in relation to the investments detailed herein. All expressions of opinions and estimates constitute a judgement and, unless otherwise stated, are those of the author and the research department of Quantlogic Ltd only, and are subject to change without notice. Quantlogic Ltd is under no obligation to update the information contained herein. Whilst Quantlogic Ltd has taken all reasonable care to ensure that the information contained in this document is not untrue or misleading at the time of publication, Quantlogic Ltd cannot guarantee its accuracy or completeness, and you should not act on it without first independently verifying its contents. This document is not guaranteed to be a complete statement or summary of any securities, markets, reports or developments referred to herein. No representation or warranty either expressed or implied is made, nor responsibility of any kind is accepted, by Quantlogic Ltd or any of its respective directors, officers, employees or analysts either as to the accuracy or completeness of any information contained in this document nor should it be relied on as such. No liability whatsoever is accepted by Quantlogic Ltd or any of its respective directors, officers, employees or analysts for any loss, whether direct or consequential, arising whether directly or indirectly as a result of the recipient acting on the content of this document, including, without limitation, lost profits arising from the use of this document or any of its contents.

This document is provided with the understanding that Quantlogic Ltd is not acting in a fiduciary capacity and it is not a personal recommendation to you. Investing in securities entails risks. Past performance is not necessarily a guide to future performance. The value of and the income produced by products may fluctuate, so that an investor may get back less than he invested. Investments in the entities and/or the securities or other financial instruments referred to are not suitable for all investors and this document should not be relied upon in substitution for the exercise of independent judgment in relation to any such investment. The stated price of any securities mentioned herein will generally be the closing price at the end of any of the three business days immediately prior to the publication date on this document. This stated price is not a representation that any transaction can be effected at this price.

Quantlogic Ltd and its respective analysts are remunerated for providing investment research to professional investors, corporations, other research institutions and consultancy houses. Quantlogic Ltd, or its respective directors, officers, employees and clients may have or take positions in the securities or entities mentioned in this document. Any of these circumstances could create, or be perceived as creating, conflicts of interest. Quantlogic Ltd analysts are not censored in any way and are free to express their personal opinions. As a result, Quantlogic Ltd may have issued other documents that are inconsistent with and reach different conclusions from, the information contained in this document. Those documents reflect the different assumptions, views and analytical methods of their authors. No director, officer or employee of Quantlogic Ltd is on the board of directors of any company referenced herein and no one at any such referenced company is on the board of directors of Quantlogic Ltd.

Quantlogic Ltd is an appointed representative of Messels Ltd which is authorised and regulated by the Financial Conduct Authority. Residents of the United Kingdom should seek specific professional financial and investment advice from a stockbroker, banker, solicitor, accountant or other independent professional adviser authorised pursuant to the Financial Services and Markets Act 2000.

The content of this report is covered by our Policy of Independence which may be viewed at www.Quantlogic.com

The performance history of research recommendations over the last 12 months is available to clients on request.

Analysts' Certification

The analysts involved in the production of this document hereby certify that the views expressed in this document accurately reflect their personal views about the securities mentioned herein. The analysts point out that they may buy, sell or already have taken positions in the securities, and related financial instruments, mentioned in this document.