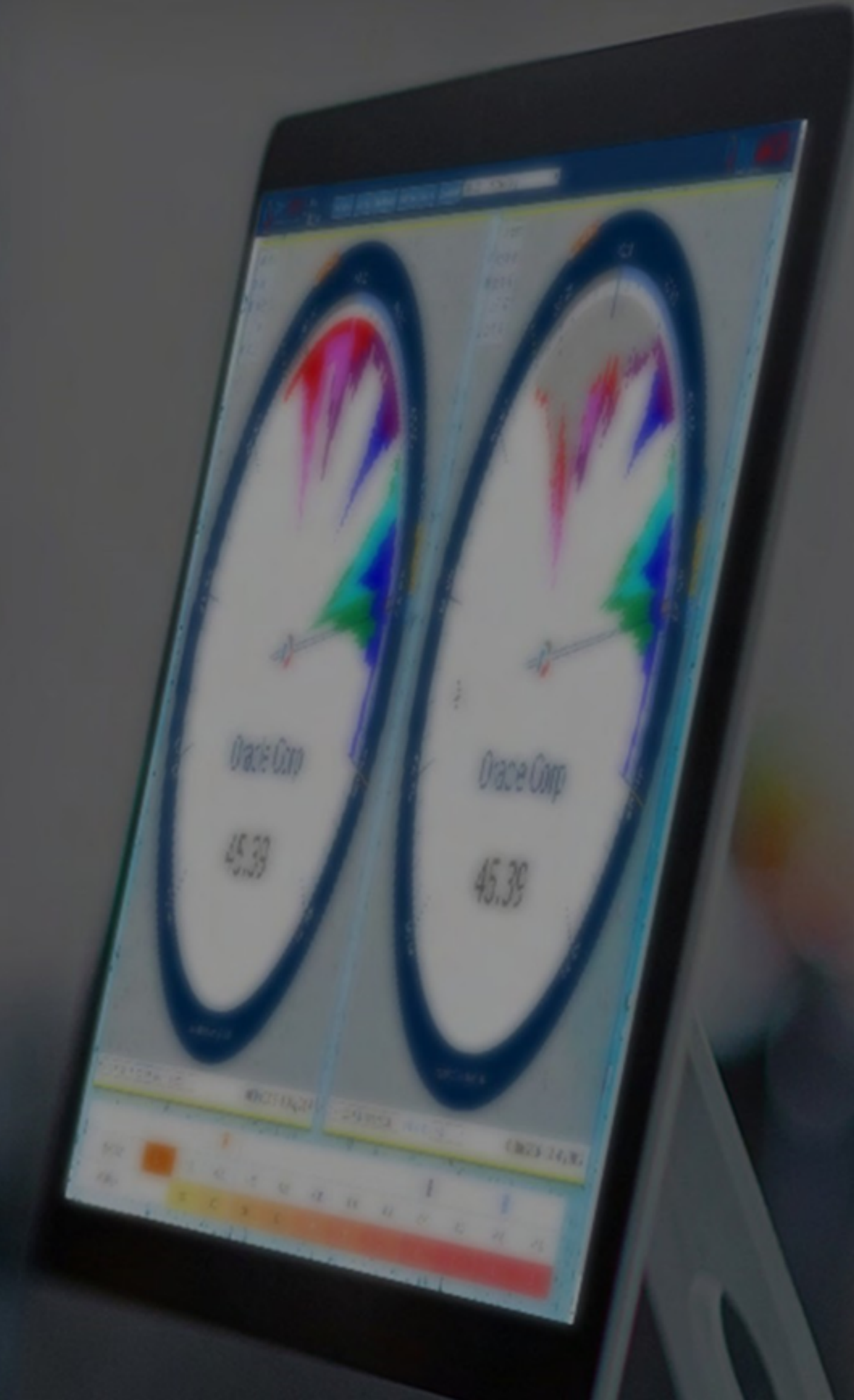




QUANTLOGIC
A quantum leap in equity analysis

Quantlogic Edge Sector Analytics Report

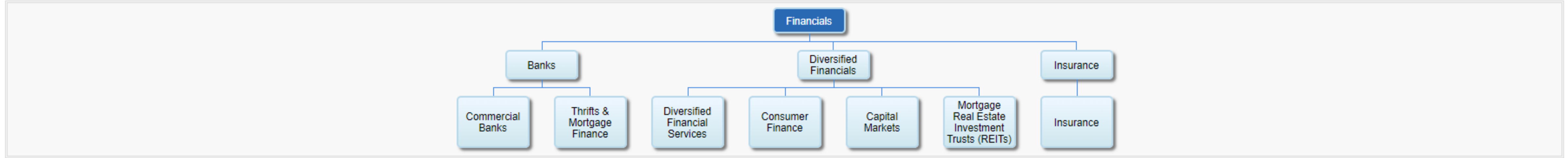
Financials Sector
Financials Industry Groups & Industries





Indicator	Sector Analytics	Category	Industry
Speedo Settings	LHS: 84 Months-Weekly (Speedo)	RHS: 12 Months-Weekly (Chart)	Color Key: Last 12 - Monthly
Sector	Financials		
Stock Exchange	New York Stock Exchange (NYSE)	Symbol list	S&P500, Data drawn from 500 Symbols

Sector Classification



Sector Analytics - Relative Performance Analytics

Relative performance of various time periods, Ranging between 1 day and 84 Months.

Sector Financials **Symbol (Sector)** \$SP500_40 **Market** S&P500

Symbol	Description	Category	Date	Close	Rank#	1D	5D	10D	MTD	1 mos	2 mos	3 mos	6 mos	12 mos	24 mos	36 mos	48 mos	60 mos	72 mos	84 mos
\$SP500_402020	Consumer Finance	Industry	12/19/2024	2230.15	1	1.43	-0.71	0.21	-2.73	0.64	8.58	12.46	23.15	30.84	42.11	28.81	63.25	21.36	43.16	14.04
\$SP500_402010	Diversified Financial Services	Industry	12/19/2024	248.99	2	0.94	1.61	1.92	-1.32	-1.75	0.98	-0.25	8.44	1.22	-6.38	22.24	37.3	10.57	-7.5	0.17
\$SP500_4030	Insurance (Industry Group)	IG	12/19/2024	786.2	3	0.57	-0.02	-0.91	-6.72	-6.06	-6.52	-8.72	1.02	-0.21	-17.6	19.54	29.08	-5.08	-3.28	-23.25
\$SP500_403010	Insurance (Industry)	Industry	12/19/2024	786.2	4	0.57	-0.02	-0.91	-6.72	-6.06	-6.52	-8.72	1.02	-0.21	-17.6	19.54	29.08	-5.08	-3.28	-23.25
\$SP500_4020	Diversified Financials	IG	12/19/2024	1370.34	5	0.52	-0.06	0	-2.81	-2.75	0.8	1.96	11.17	2.88	-7.26	0.04	15.75	0.86	-0.88	-17.83
\$SP500_40	Financials	Sector	12/19/2024	793.28	6	0.49	-0.3	-0.79	-4.15	-4.05	0.1	1.45	9.03	3.97	-10.13	-2.9	9.79	-28.25	-29.55	-48.12
\$SP500_4010	Banks	IG	12/19/2024	461.17	7	0.39	-1.05	-2.53	-5.65	-5.79	2.85	7.38	9.38	9.21	-6.97	-15.01	-4.49	-61.86	-66.35	-83.69
\$SP500_401010	Commercial Banks	Industry	12/19/2024	658.87	8	0.39	-1.05	-2.53	-5.65	-5.79	2.85	7.38	9.38	9.21	-6.97	-15.01	-4.49	-61.86	-66.35	-83.69
\$INX	S&P 500 Index	Index	12/19/2024	5867.08	9	0	0	0	0	0	0	0	0	0	0	0	0	0	0	0
\$SP500_402030	Capital Markets	Industry	12/19/2024	388.55	10	-0.23	-2.12	-2.53	-4.77	-4.68	-0.81	3.14	12.82	0.45	-13.74	-13.15	-0.02	-3.7	1	-28.51
Subsidiary indexes Count		9 / 10	Subsidiary indexes Outperform Count			8	1	2	0	1	6	6	9	7	1	5	6	3	2	2

84 Months O: 966.02 H: 2385.21 L: 482.36 C: 2230.15

12 Months - O: 1469.8 H: 2385.21 L: 1378.16 C: 2230.15

Sector Information

- SEC Financials
- IG Diversified Financials
- IND Consumer Finance
- SYM \$SP500_402020

Price Control Point (PCPs)

- | | |
|--------------|--------------|
| 2M-D 1854.2 | 3M-D 1724.7 |
| 3M-W 1747.5 | 6M-D 1730.4 |
| 6M-W 1730.1 | 12M-D 1730.4 |
| 12M-W 1730.1 | 24M-W 1232.4 |
| 36M-W 1232.4 | 48M-W 1232.7 |
| 60M-W 1232.7 | 72M-W 1232.7 |
| 84M-W 1232.7 | |

Price Control Cluster (PCCs)

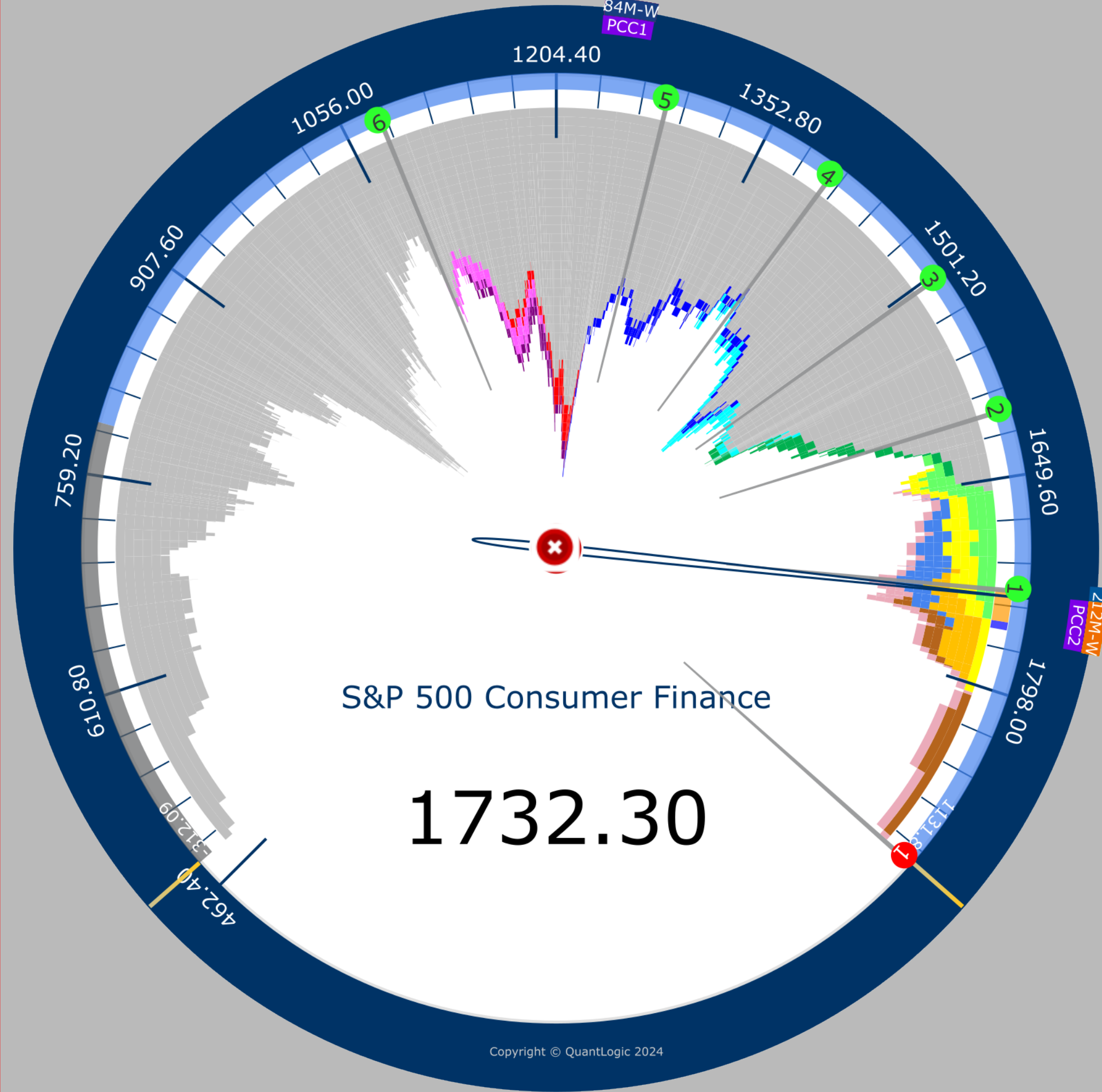
- PCC1 1232.6
- PCC2 1729.6

Color Key (Monthly)

- Jan 2024 - Dec 2023 (LHS)
- Jan 2024
- Mar 2024
- May 2024
- Jul 2024
- Sep 2024
- Nov 2024
- Feb 2024
- Apr 2024
- Jun 2024
- Aug 2024
- Oct 2024
- Dec 2024

S&R: Fib Retracements (12 mos)

- 1 2385.2
- 2 2000.5
- 3 1881.7
- 4 1762.9
- 5 2147.5
- 6 1615.8



01 Jan 2018 - 19 Dec 2024

84 Months Weekly Monthly Last 12 84 Months 08/13/24 (D)

S&P 500 Consumer Finance [Weekly]

S&R: Fibonacci Retracement 12M



19 Dec 2024 12 Months Weekly 08/13/2024 2:05 AM

84 Months O: 113.42 H: 261.19 L: 90.77 C: 248.99

12 Months - O: 198.41 H: 261.19 L: 198.12 C: 248.99

Sector Information

- SEC Financials
- IG Diversified Financials
- IND Diversified Financial Services
- SYM \$SP500_402010

Price Control Point (PCPs)

- | | |
|-------------|-------------|
| 2M-D 220.4 | 3M-D 216.9 |
| 3M-W 216.2 | 6M-D 218.4 |
| 6M-W 220.1 | 12M-D 218.4 |
| 12M-W 218.6 | 24M-W 178.3 |
| 36M-W 178.4 | 48M-W 178.4 |
| 60M-W 178.4 | 72M-W 178.4 |
| 84M-W 114 | |

Price Control Cluster (PCCs)

- | | |
|------------|------------|
| PCC1 178.3 | PCC2 218.6 |
| PCC3 220.3 | |

Color Key (Monthly)

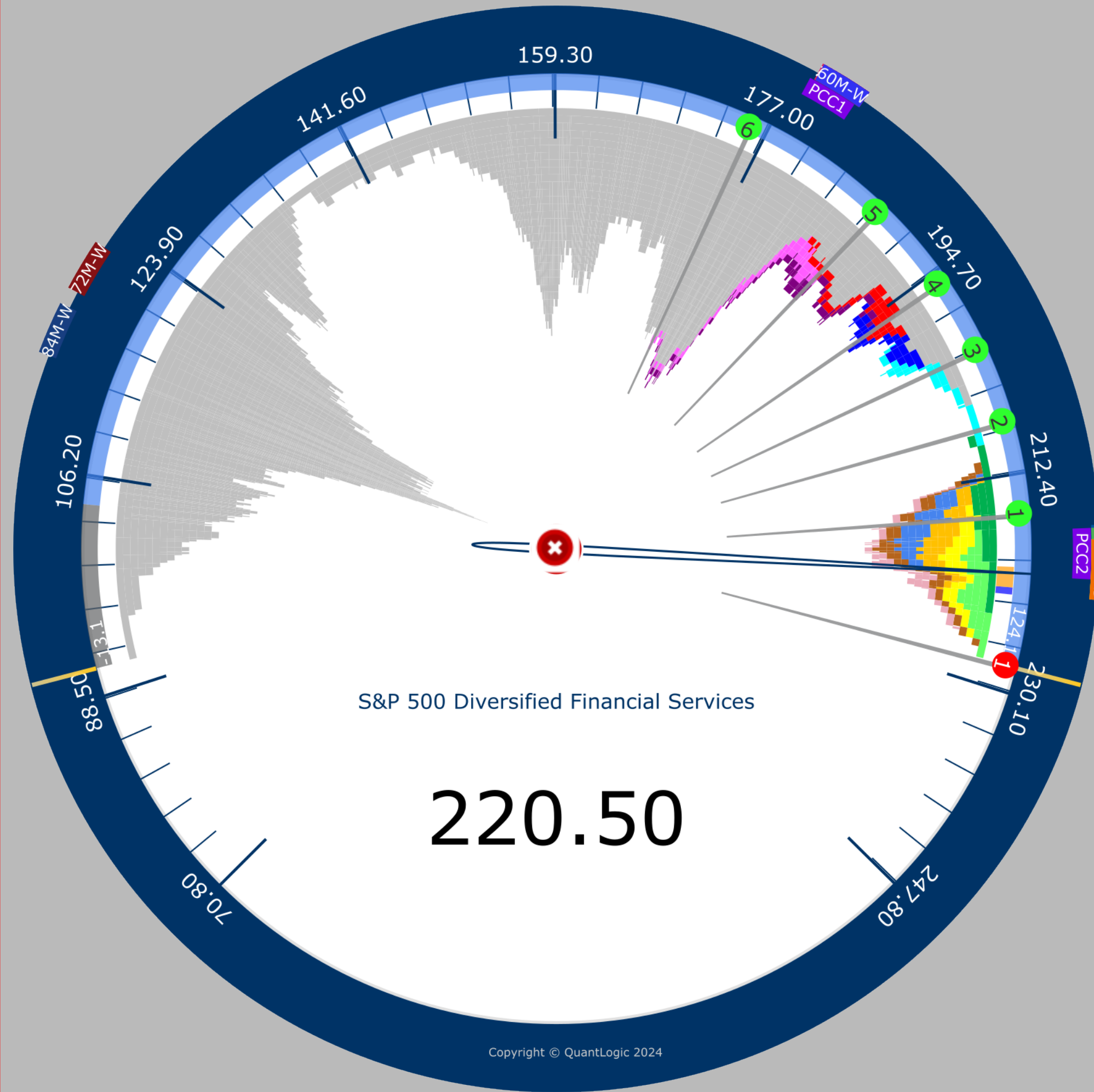
- | | |
|----------|----------|
| Jan 2024 | Feb 2024 |
| Mar 2024 | Apr 2024 |
| May 2024 | Jun 2024 |
| Jul 2024 | Aug 2024 |
| Sep 2024 | Oct 2024 |
| Nov 2024 | Dec 2024 |

S&R: Fib Retracements (12 mos)

- | | |
|---------|---------|
| 1 261.2 | 1 246.3 |
| 2 237.1 | 3 229.7 |
| 4 222.2 | 5 213 |

01 Jan 2018 - 19 Dec 2024

84 Months Weekly Monthly Last 12 84 Months 08/13/24 (D)



S&P 500 Diversified Financial Services [Weekly]

S&R: Fibonacci Retracement 12M



19 Dec 2024 12 Months Weekly 08/13/2024 2:05 AM

84 Months O: 402.92 H: 875.06 L: 258.71 C: 786.2

12 Months - O: 640.11 H: 875.06 L: 640.11 C: 786.2

Sector Information

SEC Financials
IG Insurance
SYM \$SP500_4030

Price Control Point (PCPs)

2M-D 753.1 3M-D 724
3M-W 725.7 6M-D 723.9
6M-W 728.8 12M-D 723.8
12M-W 728.8 24M-W 595.5
36M-W 546.3 48M-W 546.3
60M-W 546.3 72M-W 546.3
84M-W 377.1

Price Control Cluster (PCCs)

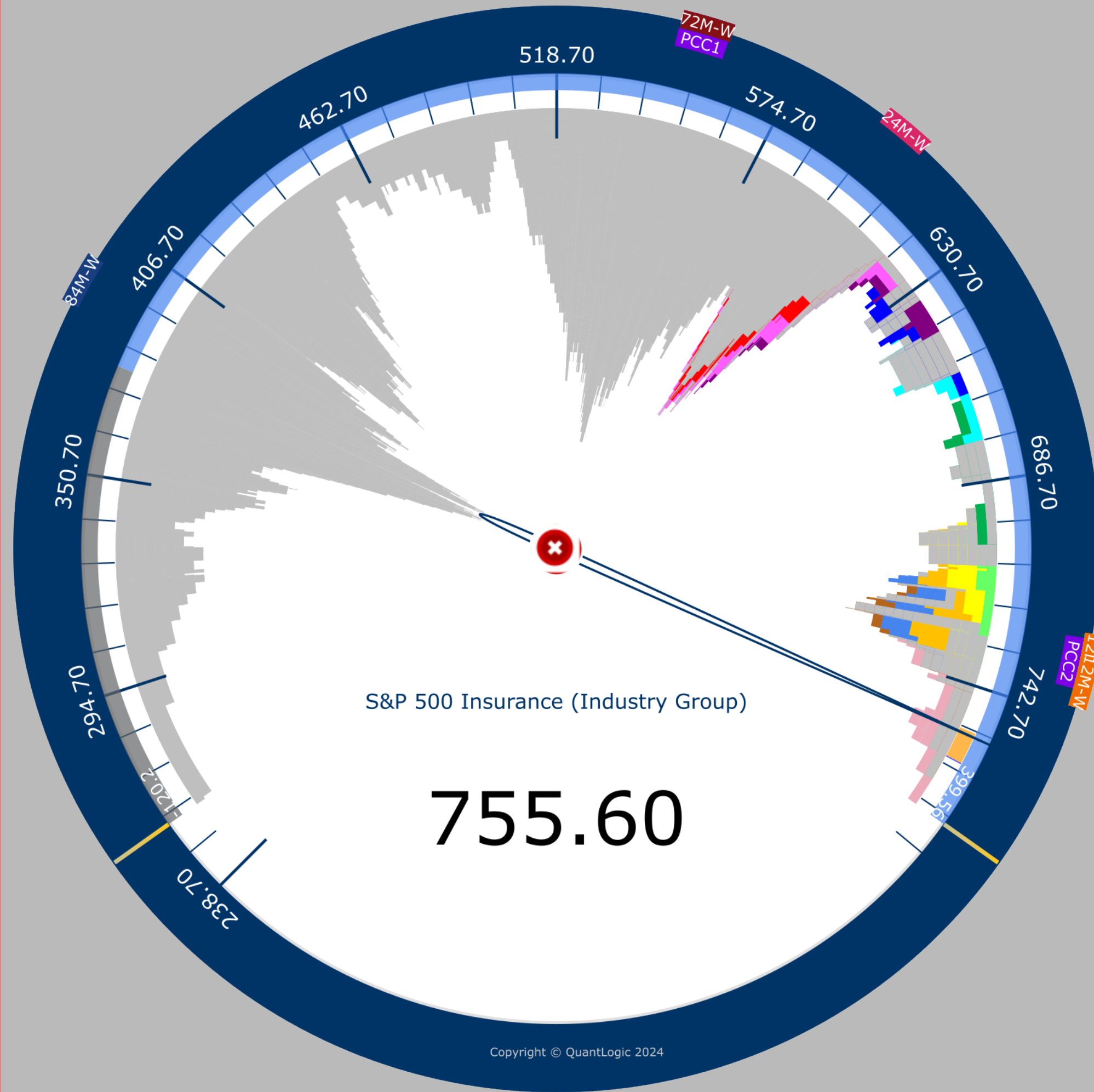
PCC1 546.3 PCC2 725.9

Color Key (Monthly)

Jan 2024 - Dec 2023 (LHS)
Jan 2024 (Red) Feb 2024 (Pink)
Mar 2024 (Purple) Apr 2024 (Blue)
May 2024 (Cyan) Jun 2024 (Green)
Jul 2024 (Light Green) Aug 2024 (Yellow)
Sep 2024 (Orange) Oct 2024 (Light Blue)
Nov 2024 (Brown) Dec 2024 (Pink)

S&R: Fib Retracements (12 mos)

1 819.6 2 875.1
3 785.3 4 757.6
5 729.9 6 695.6



01 Jan 2018 - 19 Dec 2024

84 Months Weekly Monthly Last 12 84 Months 08/13/24 (D)

S&P 500 Insurance (Industry Group) [Weekly]

S&R: Fibonacci Retracement 12M



19 Dec 2024 12 Months Weekly 08/13/2024 2:06 AM

84 Months O: 402.92 H: 875.06 L: 258.71 C: 786.2

12 Months - O: 640.11 H: 875.06 L: 640.11 C: 786.2

Sector Information

- SEC** Financials
- IG** Insurance
- IND** Insurance
- SYM** \$SP500_403010

Price Control Point (PCPs)

- | | |
|--------------------|--------------------|
| 2M-D 753.1 | 3M-D 724 |
| 3M-W 725.7 | 6M-D 723.9 |
| 6M-W 728.9 | 12M-D 723.8 |
| 12M-W 728.9 | 24M-W 595.6 |
| 36M-W 546.3 | 48M-W 546.3 |
| 60M-W 546.3 | 72M-W 546.3 |
| 84M-W 384.9 | |

Price Control Cluster (PCCs)

- PCC1** 546.3
- PCC2** 725.9

Color Key (Monthly)

- Jan 2024 - Dec 2023 (LHS)
- Jan 2024
- Feb 2024
- Mar 2024
- Apr 2024
- May 2024
- Jun 2024
- Jul 2024
- Aug 2024
- Sep 2024
- Oct 2024
- Nov 2024
- Dec 2024

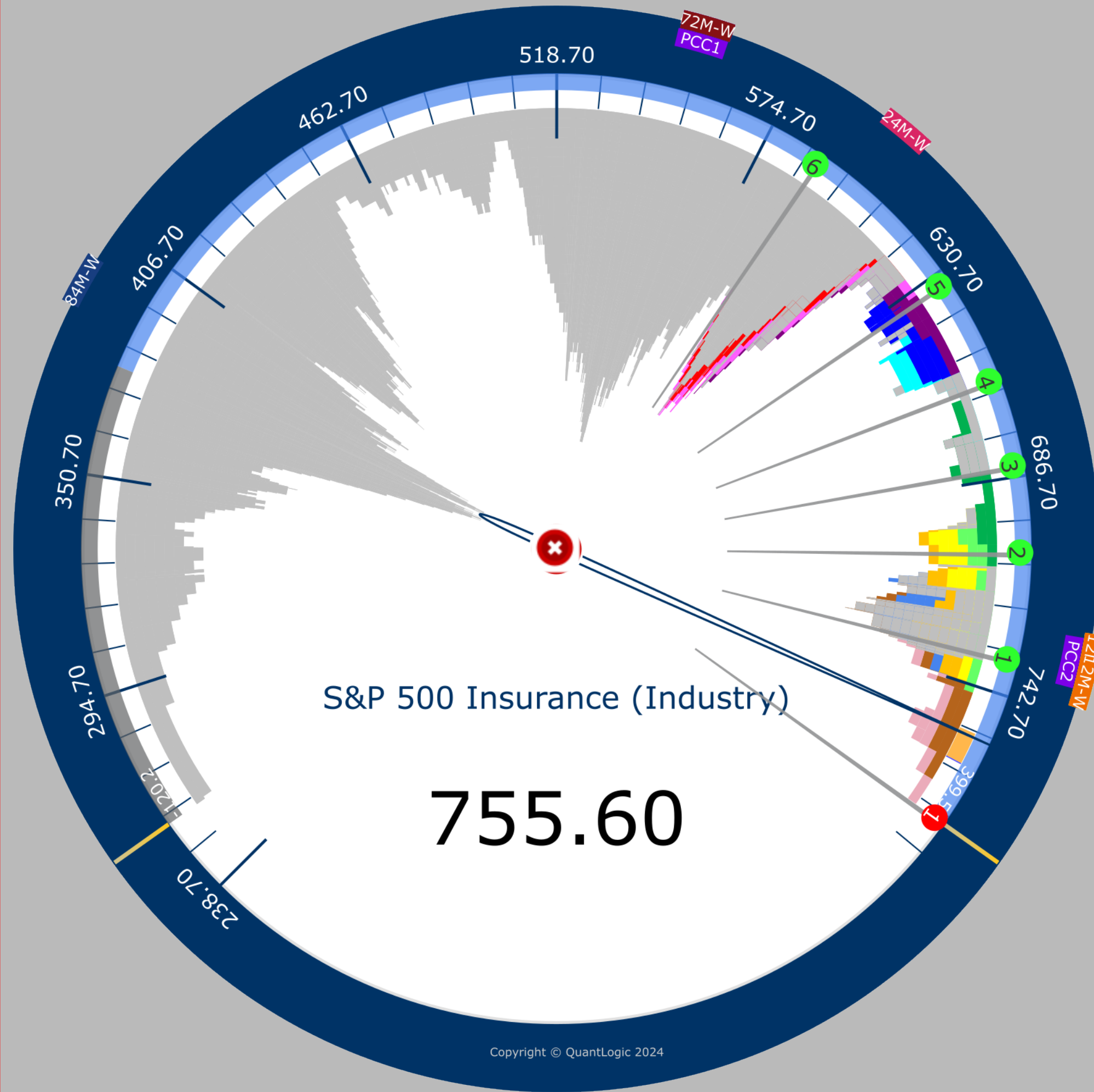
S&R: Fib Retracements (12 mos)

- | | |
|----------------|----------------|
| 1 819.6 | 2 875.1 |
| 1 785.3 | 2 757.6 |
| 3 729.9 | 4 695.6 |

01 Jan 2018 - 19 Dec 2024

84 Months Weekly Monthly Last 12 84 Months

08/13/24 (D)



S&P 500 Insurance (Industry) [Weekly]

S&R: Fibonacci Retracement 12M



19 Dec 2024 12 Months Weekly

08/13/2024 2:06 AM

84 Months O: 681.42 H: 1457.89 L: 471.53 C: 1370.34

12 Months - O: 1085.7 H: 1457.89 L: 1069.26 C: 1370.34

Sector Information

SEC Financials
IG Diversified Financials
SYM \$SP500_4020

Price Control Point (PCPs)

2M-D 1210.3	3M-D 1164.6
3M-W 1164.6	6M-D 1162.9
6M-W 1162.9	12M-D 1163
12M-W 1162.9	24M-W 940.1
36M-W 940.1	48M-W 1027.6
60M-W 1027.6	72M-W 1027.6
84M-W 680.6	

Price Control Cluster (PCCs)

PCC1 1027.6 **PCC2** 1163.6

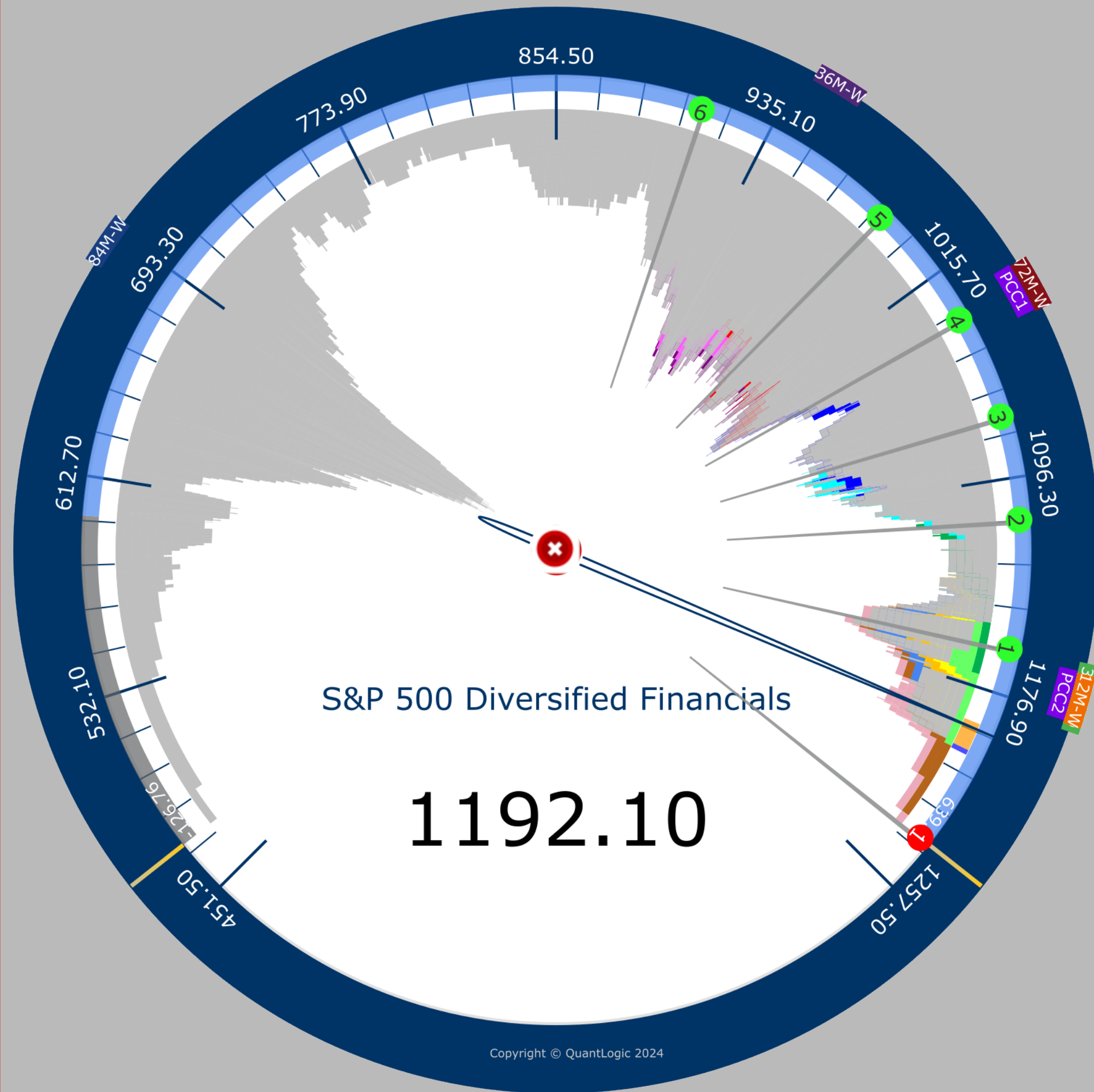
Color Key (Monthly)

Jan 2024 - Dec 2023 (LHS)

Jan 2024	Feb 2024
Mar 2024	Apr 2024
May 2024	Jun 2024
Jul 2024	Aug 2024
Sep 2024	Oct 2024
Nov 2024	Dec 2024

S&R: Fib Retracements (12 mos)

1 1457.9	1 1366.2
2 1309.4	3 1263.6
4 1217.7	5 1161

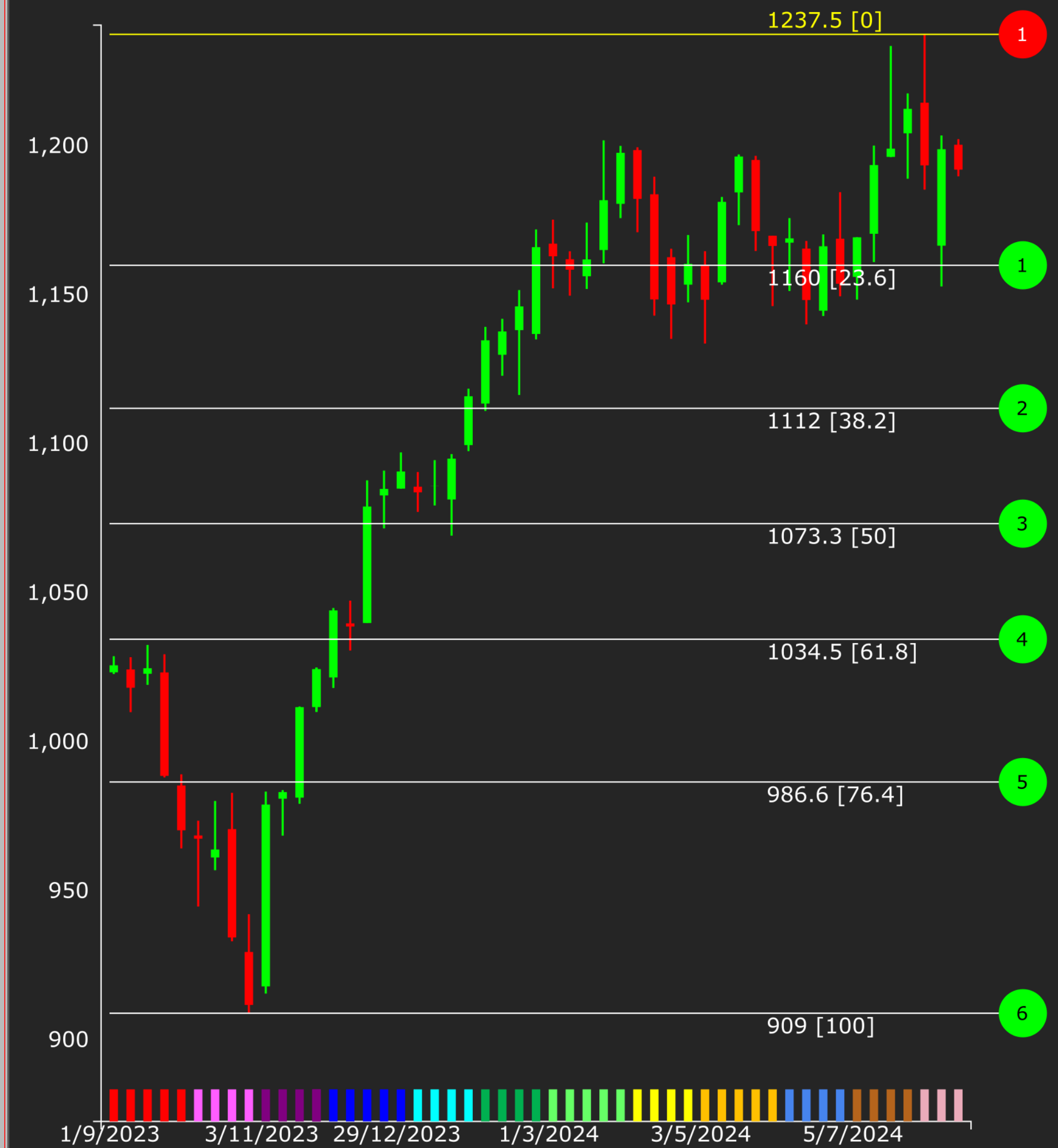


01 Jan 2018 - 19 Dec 2024

84 Months Weekly Monthly Last 12 84 Months 08/13/24 (D)

S&P 500 Diversified Financials [Weekly]

S&R: Fibonacci Retracement 12M



19 Dec 2024 12 Months Weekly 08/13/2024 2:06 AM

84 Months O: 491.01 H: 725.14 L: 273.17 C: 658.87

12 Months - O: 498.45 H: 725.14 L: 477.71 C: 658.87

Sector Information

- SEC Financials
- IG Banks
- IND Commercial Banks
- SYM \$SP500_401010

Price Control Point (PCPs)

- 2M-D 609.1
- 3M-D 569
- 3M-W 564.6
- 6M-D 562.8
- 6M-W 563.6
- 12M-D 565
- 12M-W 563.6
- 24M-W 419.9
- 36M-W 494.8
- 48M-W 569.3
- 60M-W 569.3
- 72M-W 456.4
- 84M-W 466.2

Price Control Cluster (PCCs)

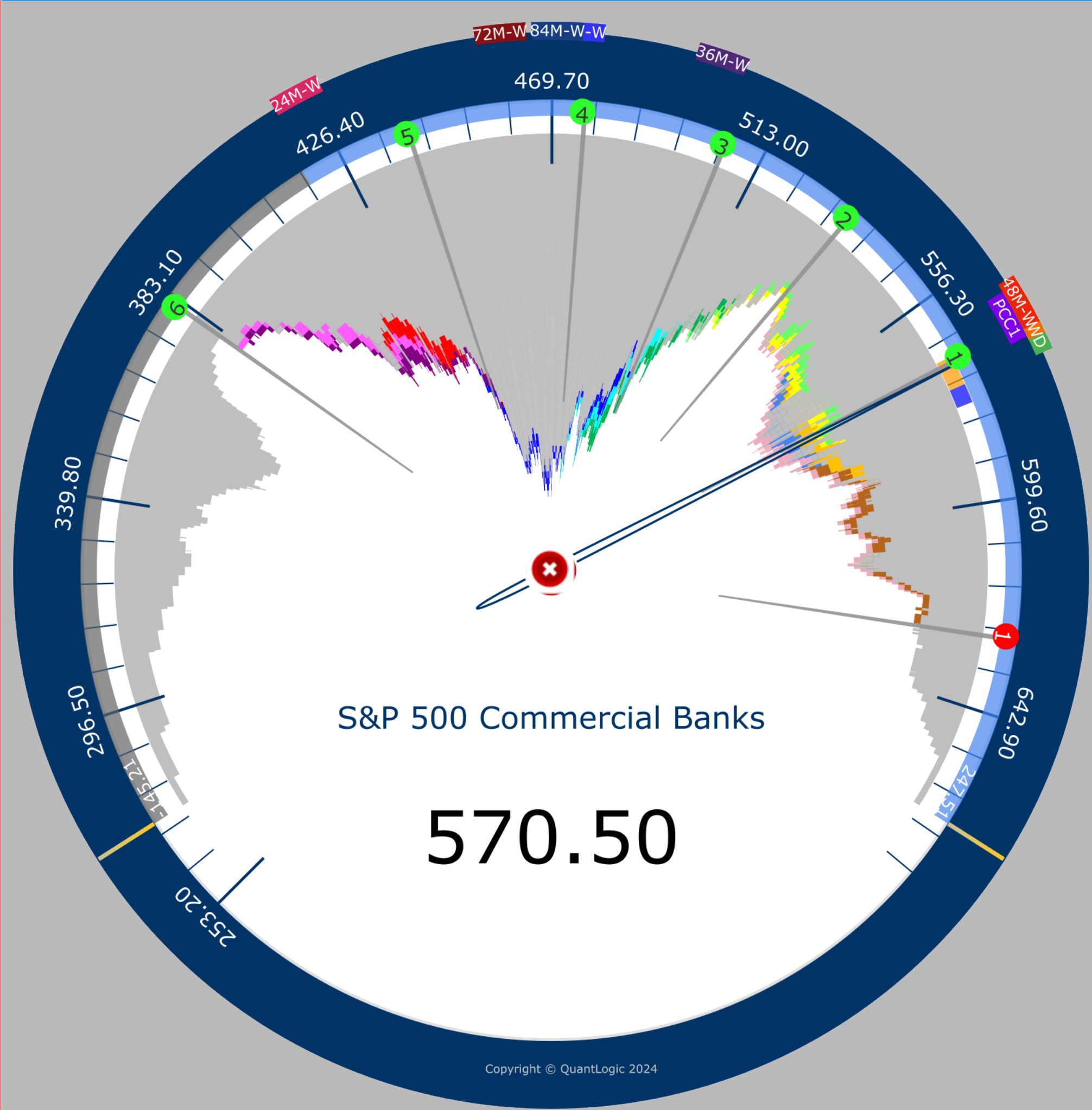
- PCC1 563.9
- PCC2 569.6

Color Key (Monthly)

- Jan 2024 - Dec 2023 (LHS)
- Jan 2024
- Feb 2024
- Mar 2024
- Apr 2024
- May 2024
- Jun 2024
- Jul 2024
- Aug 2024
- Sep 2024
- Oct 2024
- Nov 2024
- Dec 2024

S&R: Fib Retracements (12 mos)

- 1 666.7
- 2 725.1
- 3 630.6
- 4 601.4
- 5 572.2
- 6 536.1



01 Jan 2018 - 19 Dec 2024

84 Months Weekly Monthly Last 12 84 Months 08/13/24 (D)

S&P 500 Commercial Banks [Weekly]

S&R: Fibonacci Retracement 12M



19 Dec 2024 12 Months Weekly 08/13/2024 2:05 AM

84 Months O: 343.68 H: 507.56 L: 191.21 C: 461.17

12 Months - O: 348.89 H: 507.56 L: 334.37 C: 461.17

Sector Information

SEC Financials
IG Banks
SYM \$SP500_4010

Price Control Point (PCPs)

2M-D 426.4	3M-D 398.3
3M-W 395.2	6M-D 394
6M-W 394.5	12M-D 395.4
12M-W 394.5	24M-W 293.9
36M-W 346.3	48M-W 398.5
60M-W 398.5	72M-W 319.5
84M-W 326.3	

Price Control Cluster (PCCs)

PCC1 394.6 **PCC2** 398.6

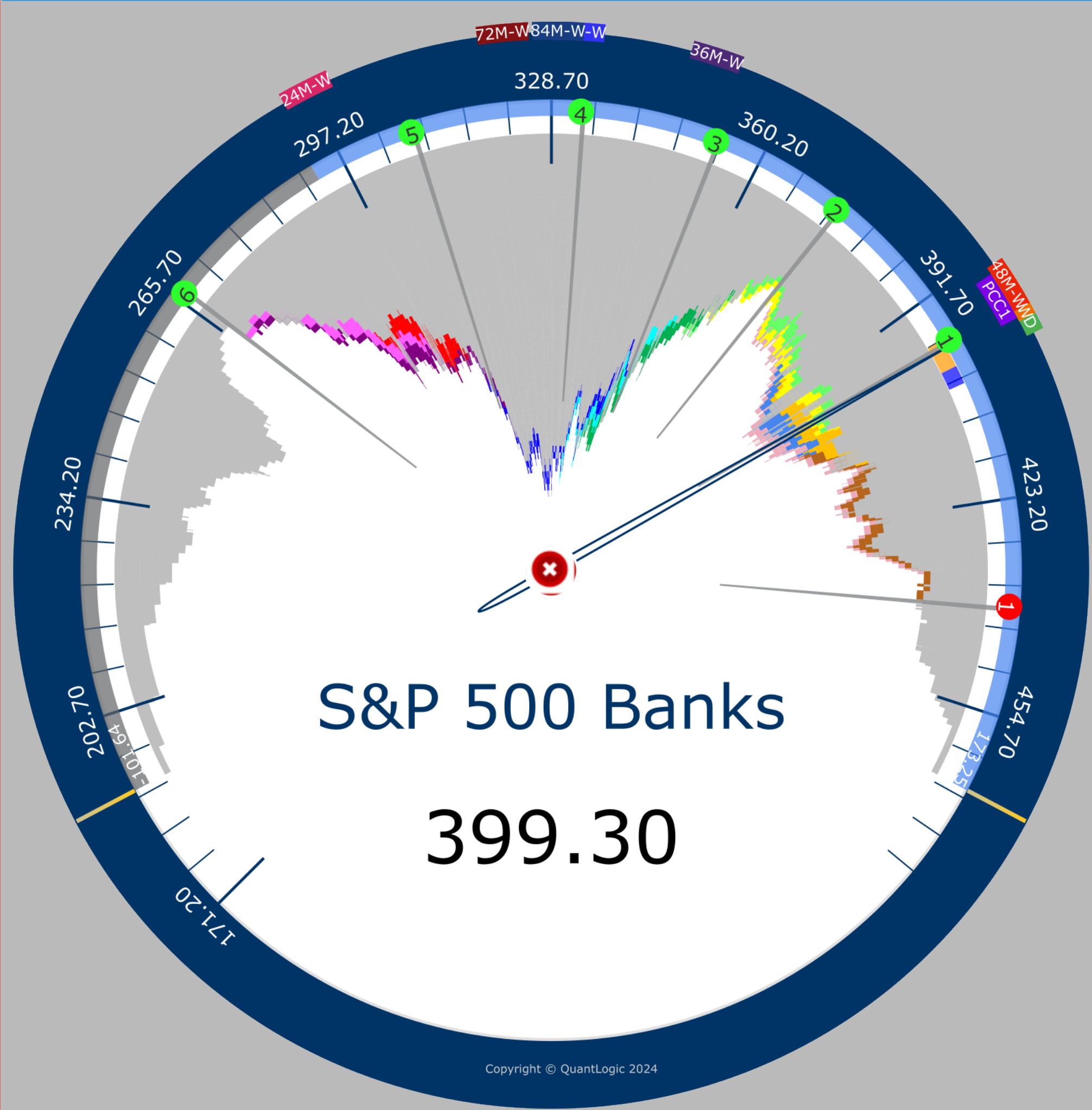
Color Key (Monthly)

Jan 2024 - Dec 2023 (LHS)

Jan 2024	Feb 2024
Mar 2024	Apr 2024
May 2024	Jun 2024
Jul 2024	Aug 2024
Sep 2024	Oct 2024
Nov 2024	Dec 2024

S&R: Fib Retracements (12 mos)

1 466.7	2 507.6
1 441.4	2 421
3 400.5	4 375.2



01 Jan 2018 - 19 Dec 2024

84 Months Weekly Monthly Last 12 84 Months 08/13/24 (D)

S&P 500 Banks [Weekly]

S&R: Fibonacci Retracement 12M



19 Dec 2024 12 Months Weekly 08/13/2024 2:05 AM

84 Months O: 2683.73 H: 6099.97 L: 2191.86 C: 5867.08

12 Months - O: 4745.2 H: 6099.97 L: 4682.11 C: 5867.08

Sector Information

SEC -
IG -
SYM \$INX

Price Control Point (PCPs)

2M-D	6006.1	3M-D	5832.2
3M-W	5813.3	6M-D	5617.8
6M-W	5564.4	12M-D	5472.1
12M-W	5501.3	24M-W	4133.1
36M-W	3958	48M-W	4451.8
60M-W	4451.8	72M-W	4451.8
84M-W	2730.9		

Price Control Cluster (PCCs)

PCC1 4451.9

Color Key (Monthly)

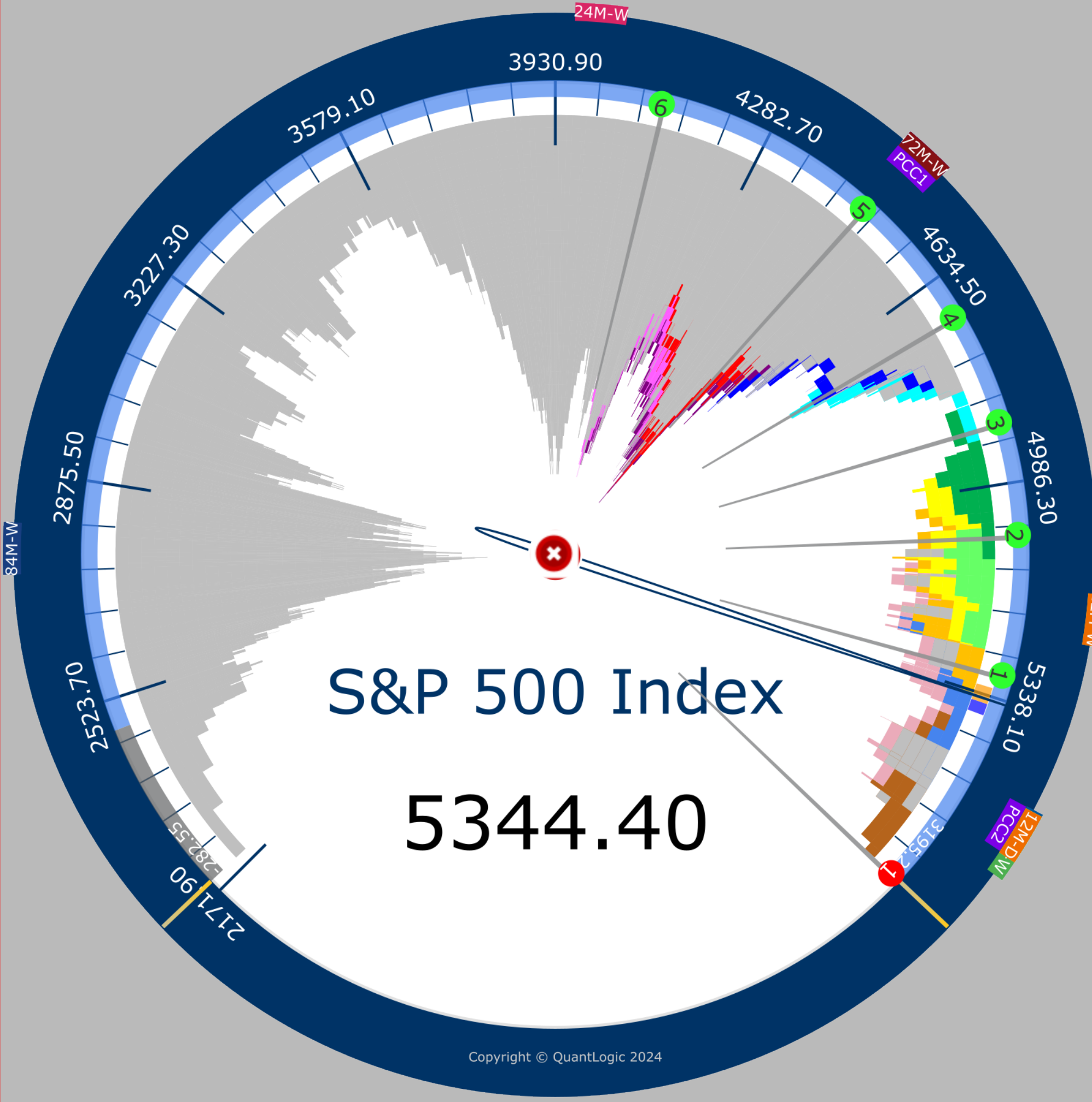
Jan 2024 - Dec 2023 (LHS)

Jan 2024	Feb 2024
Mar 2024	Apr 2024
May 2024	Jun 2024
Jul 2024	Aug 2024
Sep 2024	Oct 2024
Nov 2024	Dec 2024

S&R: Fib Retracements (12 mos)

1 6100	1 5765.4
2 5558.3	3 5391
4 5223.7	5 5016.7

01 Jan 2018 - 19 Dec 2024



S&P 500 Index [Weekly]

S&R: Fibonacci Retracement 12M



84 Months Weekly Monthly Last 12 84 Months

08/13/24 (D)

19 Dec 2024 12 Months Weekly

08/13/2024 1:59 AM

84 Months O: 203.76 H: 421.98 L: 137.19 C: 388.55

12 Months - O: 316.33 H: 421.98 L: 302.17 C: 388.55

Sector Information

- SEC Financials
- IG Diversified Financials
- IND Capital Markets
- SYM \$SP500_402030

Price Control Point (PCPs)

- 2M-D 348.7
- 3M-D 324.5
- 3M-W 325.5
- 6M-D 324.1
- 6M-W 326.3
- 12M-D 312.8
- 12M-W 316.1
- 24M-W 271.2
- 36M-W 271.2
- 48M-W 271
- 60M-W 271
- 72M-W 271
- 84M-W 209

Price Control Cluster (PCCs)

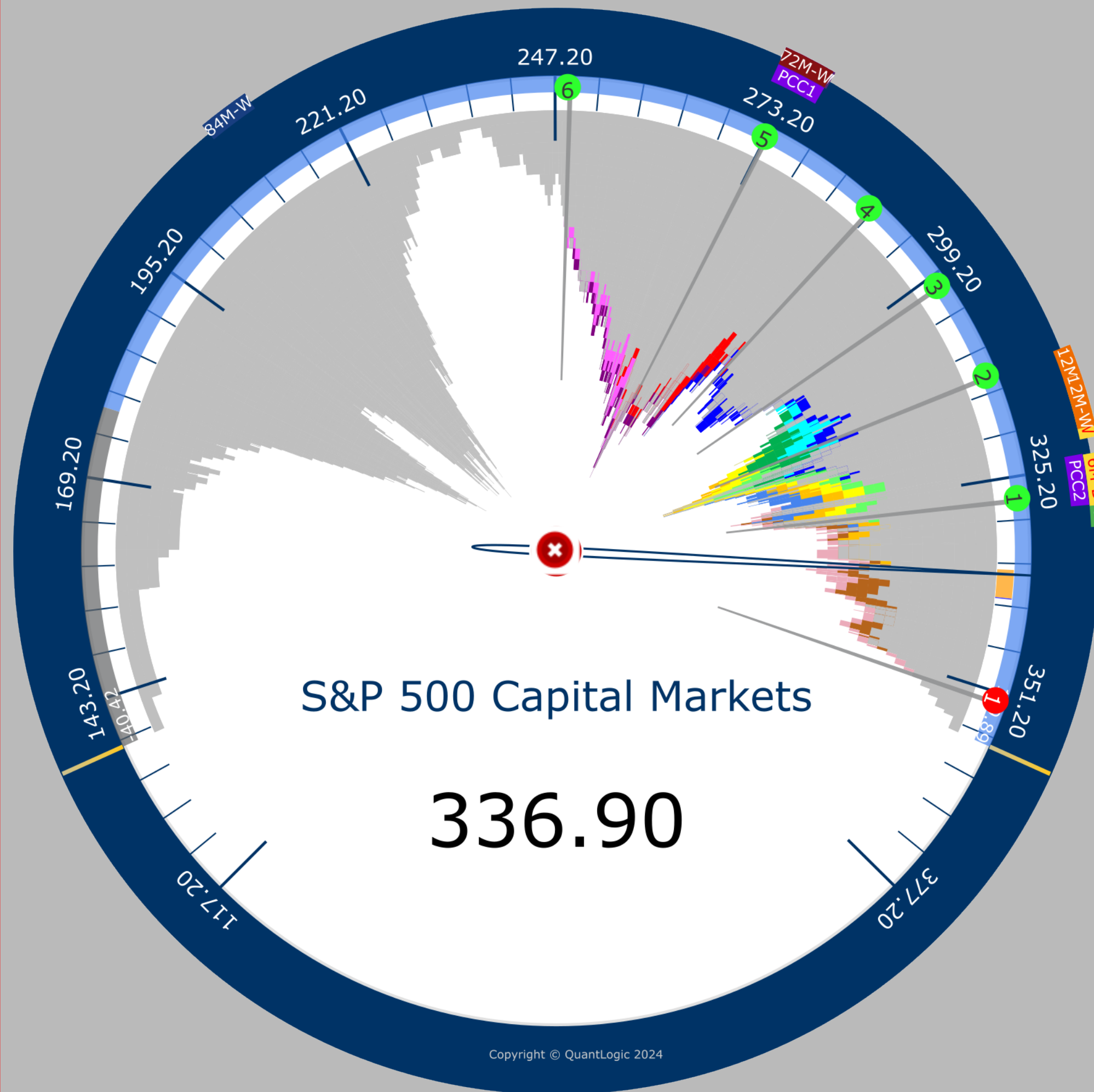
- PCC1 271
- PCC2 325

Color Key (Monthly)

- Jan 2024 - Dec 2023 (LHS)
- Jan 2024
- Feb 2024
- Mar 2024
- Apr 2024
- May 2024
- Jun 2024
- Jul 2024
- Aug 2024
- Sep 2024
- Oct 2024
- Nov 2024
- Dec 2024

S&R: Fib Retracements (12 mos)

- 1 422
- 2 376.2
- 3 362.1
- 4 347.9
- 5 330.4
- 6 393.7



01 Jan 2018 - 19 Dec 2024

84 Months Weekly Monthly Last 12 84 Months 08/13/24 (D)

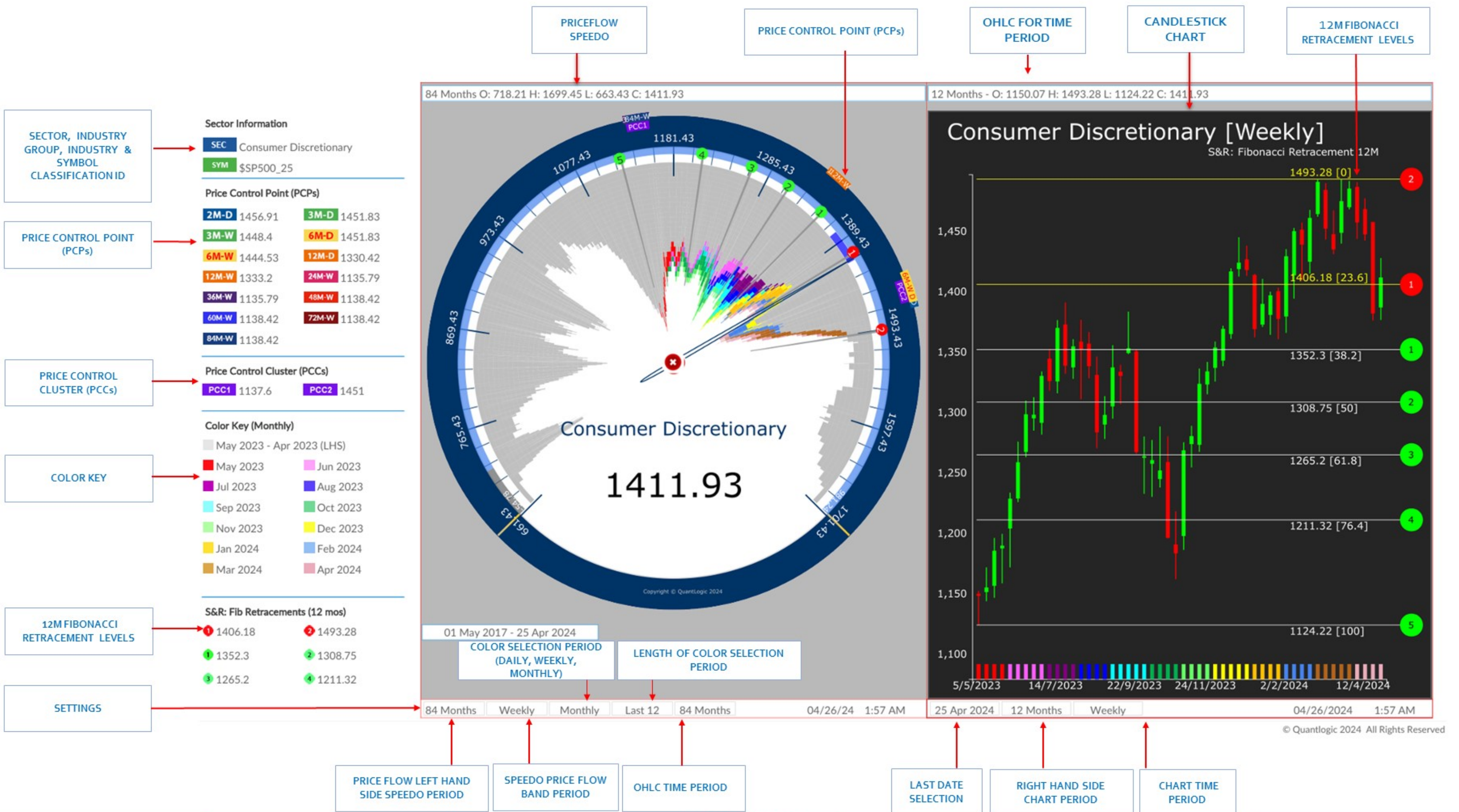
S&P 500 Capital Markets [Weekly]

S&R: Fibonacci Retracement 12M



19 Dec 2024 12 Months Weekly 08/13/2024 2:06 AM

MARKET PRICE FLOW ANALYSIS : 84M WEEKLY SPEEDO VS 12M WEEKLY CHART



SECTOR, INDUSTRY GROUP, INDUSTRY & SYMBOL CLASSIFICATION ID

SEC Consumer Discretionary

SYM \$SP500_25

PRICE CONTROL POINT (PCPs)

Period	Price
2M-D	1456.91
3M-D	1451.83
3M-W	1448.4
6M-D	1451.83
6M-W	1444.53
12M-D	1330.42
12M-W	1333.2
24M-W	1135.79
36M-W	1135.79
48M-W	1138.42
60M-W	1138.42
72M-W	1138.42
84M-W	1138.42

PRICE CONTROL CLUSTER (PCCs)

PCC1	1137.6
PCC2	1451

COLOR KEY

Month	Color
May 2023	Red
Jun 2023	Pink
Jul 2023	Purple
Aug 2023	Blue
Sep 2023	Cyan
Oct 2023	Green
Nov 2023	Light Green
Dec 2023	Yellow
Jan 2024	Orange
Feb 2024	Light Blue
Mar 2024	Brown
Apr 2024	Pink

12M FIBONACCI RETRACEMENT LEVELS

Level	Price	Distance
1	1406.18	23.6
2	1352.3	38.2
3	1308.75	50
4	1265.2	61.8
5	1211.32	76.4

SETTINGS

If you like to discuss Quantlogic Edge further, [Click here to book a Zoom meeting](#)



51 Ashley Gardens, Ambrosden Avenue,
London SW1P 1QF United Kingdom

Website: quantlogic.com

Mail: info@quantlogic.com

Tel: (UK) +44 (0)20 3289 2234

(US) +1 646 374 4234

Research Disclaimer:

Important Disclosure Statement from Quantlogic Ltd



This document is issued by Quantlogic Limited solely for its clients. It is for professional clients only. It may not be reproduced, redistributed or passed to any other person in whole or in part for any purpose without written consent of Quantlogic Ltd. This material is not directed at you if Quantlogic Ltd is prohibited or restricted by any legislation or regulation in any jurisdiction from making it available to you.

This document is provided for information purposes only and should not be regarded as an offer, solicitation, invitation, inducement or recommendation relating to the subscription, purchase or sale of any security or other financial instrument. This document does not constitute, and should not be interpreted as, investment advice. It is accordingly recommended that you should seek independent advice from a suitably qualified professional advisor before taking any decisions in relation to the investments detailed herein. All expressions of opinions and estimates constitute a judgement and, unless otherwise stated, are those of the author and the research department of Quantlogic Ltd only, and are subject to change without notice. Quantlogic Ltd is under no obligation to update the information contained herein. Whilst Quantlogic Ltd has taken all reasonable care to ensure that the information contained in this document is not untrue or misleading at the time of publication, Quantlogic Ltd cannot guarantee its accuracy or completeness, and you should not act on it without first independently verifying its contents. This document is not guaranteed to be a complete statement or summary of any securities, markets, reports or developments referred to herein. No representation or warranty either expressed or implied is made, nor responsibility of any kind is accepted, by Quantlogic Ltd or any of its respective directors, officers, employees or analysts either as to the accuracy or completeness of any information contained in this document nor should it be relied on as such. No liability whatsoever is accepted by Quantlogic Ltd or any of its respective directors, officers, employees or analysts for any loss, whether direct or consequential, arising whether directly or indirectly as a result of the recipient acting on the content of this document, including, without limitation, lost profits arising from the use of this document or any of its contents.

This document is provided with the understanding that Quantlogic Ltd is not acting in a fiduciary capacity and it is not a personal recommendation to you. Investing in securities entails risks. Past performance is not necessarily a guide to future performance. The value of and the income produced by products may fluctuate, so that an investor may get back less than he invested. Investments in the entities and/or the securities or other financial instruments referred to are not suitable for all investors and this document should not be relied upon in substitution for the exercise of independent judgment in relation to any such investment. The stated price of any securities mentioned herein will generally be the closing price at the end of any of the three business days immediately prior to the publication date on this document. This stated price is not a representation that any transaction can be effected at this price.

Quantlogic Ltd and its respective analysts are remunerated for providing investment research to professional investors, corporations, other research institutions and consultancy houses. Quantlogic Ltd, or its respective directors, officers, employees and clients may have or take positions in the securities or entities mentioned in this document. Any of these circumstances could create, or be perceived as creating, conflicts of interest. Quantlogic Ltd analysts are not censored in any way and are free to express their personal opinions. As a result, Quantlogic Ltd may have issued other documents that are inconsistent with and reach different conclusions from, the information contained in this document. Those documents reflect the different assumptions, views and analytical methods of their authors. No director, officer or employee of Quantlogic Ltd is on the board of directors of any company referenced herein and no one at any such referenced company is on the board of directors of Quantlogic Ltd.

Quantlogic Ltd is an appointed representative of Messels Ltd which is authorised and regulated by the Financial Conduct Authority. Residents of the United Kingdom should seek specific professional financial and investment advice from a stockbroker, banker, solicitor, accountant or other independent professional adviser authorised pursuant to the Financial Services and Markets Act 2000.

The content of this report is covered by our Policy of Independence which may be viewed at www.Quantlogic.com

The performance history of research recommendations over the last 12 months is available to clients on request.

Analysts' Certification

The analysts involved in the production of this document hereby certify that the views expressed in this document accurately reflect their personal views about the securities mentioned herein. The analysts point out that they may buy, sell or already have taken positions in the securities, and related financial instruments, mentioned in this document.