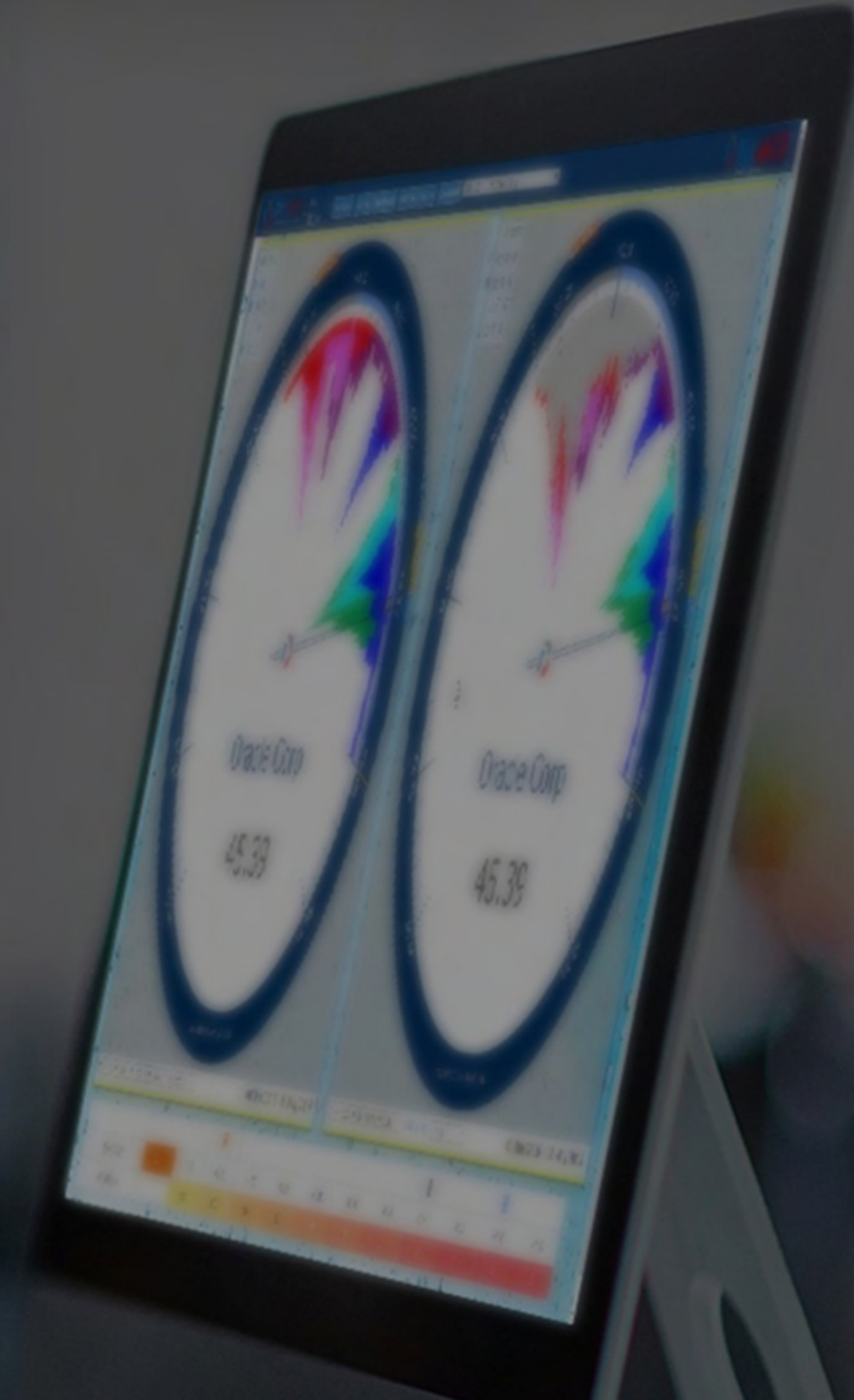




**QUANTLOGIC**  
A quantum leap in equity analysis

# Quantlogic Edge Sector Analytics Report

**Energy Sector**  
**Energy Equipment & Services Industry**





Indicator

Sector Analytics

Category

Industry

Speedo Settings

LHS: 84 Months-Weekly (Speedo)

RHS: 12 Months-Weekly (Chart)

Color Key: Last 12 - Monthly

Sector

Energy

Industry

Energy Equipment Services

Stock Exchange

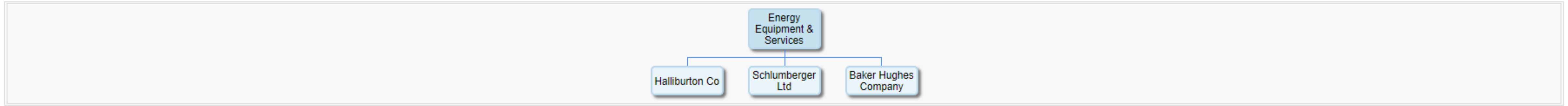
New York Stock Exchange (NYSE)

Symbol list

S&P500, Data drawn from 500 Symbols

Sector Classification

IDX S&P500 Index 
 SEC Energy 
 IG Energy 
 IND Energy Equipment & Services 
 Rank #



Sector Analytics - Relative Performance Analytics

Relative performance of various time periods, Ranging between 1 day and 84 Months.

**Sector** Energy   
 **Industry Group** Energy   
 **Industry** Energy Equipment & Services   
 **Symbol (Industry)** \$SP500\_101010   
 **Market** S&P500

Symbol	Column1	Category	Date	Close	Rank	1D	5D	10D	MTD	1 mos	2 mos	3 mos	6 mos	12 mos	24 mos	36 mos	48 mos	60 mos	72 mos	84 mos	NER Date
SLB	Schlumberger Ltd		10/16/2024	43.67	1	1.18	-2.95	-5.53	1.47	5.43	-8.46	-12.75	-30.9	-60.95	-59.53	-2.26	98.39	-61.93	-139.06	-163.84	10/18/2024
\$SP500_101010	Energy Equipment &	Industry	10/16/2024	292.8	2	0.76	-3.48	-5.67	0.74	4.76	-7.01	-11.39	-26.65	-55.15	-48.5	-3.48	86.81	-62.38	-137.79	-158.44	N.A
BKR	Baker Hughes Compan		10/16/2024	36.74	3	0.66	-2.94	-4.73	-0.33	6.18	-0.67	-0.84	-2.16	-29.61	-2.76	5.97	105.23	-30.13	-92.68	-119.94	10/22/2024
\$INX	S&P 500 Index	Index	10/16/2024	5842.47	4	0	0	0	0	0	0	0	0	0	0	0	0	0	0	0	N.A
\$SP500_1010	Energy	IG	10/16/2024	694.68	6	-0.04	-3.19	-4.84	1.72	2.73	-5.19	-4.98	-20.03	-33.8	-50.65	29.24	128.94	-33.17	-82.8	-91.14	N.A
\$SP500_10	Energy	Sector	10/16/2024	694.68	5	-0.04	-3.19	-4.84	1.72	2.73	-5.19	-4.98	-20.03	-33.8	-50.65	29.24	128.94	-33.17	-82.8	-91.14	N.A
HAL	Halliburton Co		10/16/2024	29.3	7	-0.3	-5.4	-7.35	0.45	1.32	-11.67	-20.61	-40.48	-65.95	-63.47	-18.05	56.62	-38.26	-138.79	-163.34	11/07/2024
<b>Stocks Count</b>		<b>3 / 7</b>	<b>Stocks Outperform Count</b>			<b>2</b>	<b>0</b>	<b>0</b>	<b>2</b>	<b>3</b>	<b>0</b>	<b>0</b>	<b>0</b>	<b>0</b>	<b>0</b>	<b>1</b>	<b>3</b>	<b>0</b>	<b>0</b>	<b>0</b>	

Sector Information

- SEC Energy
- IG Energy
- IND Energy Equipment & Services
- SYM SLB

Price Control Point (PCPs)

<span style="background-color: #0056b3; color: white; padding: 2px;">2M-D</span> 42.1	<span style="background-color: #28a745; color: white; padding: 2px;">3M-D</span> 43.7
<span style="background-color: #28a745; color: white; padding: 2px;">3M-W</span> 44	<span style="background-color: #ffc107; color: white; padding: 2px;">6M-D</span> 43.7
<span style="background-color: #ffc107; color: white; padding: 2px;">6M-W</span> 45	<span style="background-color: #ffc107; color: white; padding: 2px;">12M-D</span> 48.6
<span style="background-color: #ffc107; color: white; padding: 2px;">12M-W</span> 48.8	<span style="background-color: #dc3545; color: white; padding: 2px;">24M-W</span> 52.7
<span style="background-color: #6f42c1; color: white; padding: 2px;">36M-W</span> 52.7	<span style="background-color: #dc3545; color: white; padding: 2px;">48M-W</span> 52.7
<span style="background-color: #007bff; color: white; padding: 2px;">60M-W</span> 52.7	<span style="background-color: #dc3545; color: white; padding: 2px;">72M-W</span> 39.7
<span style="background-color: #0056b3; color: white; padding: 2px;">84M-W</span> 39.7	

Price Control Cluster (PCCs)

PCC1 52

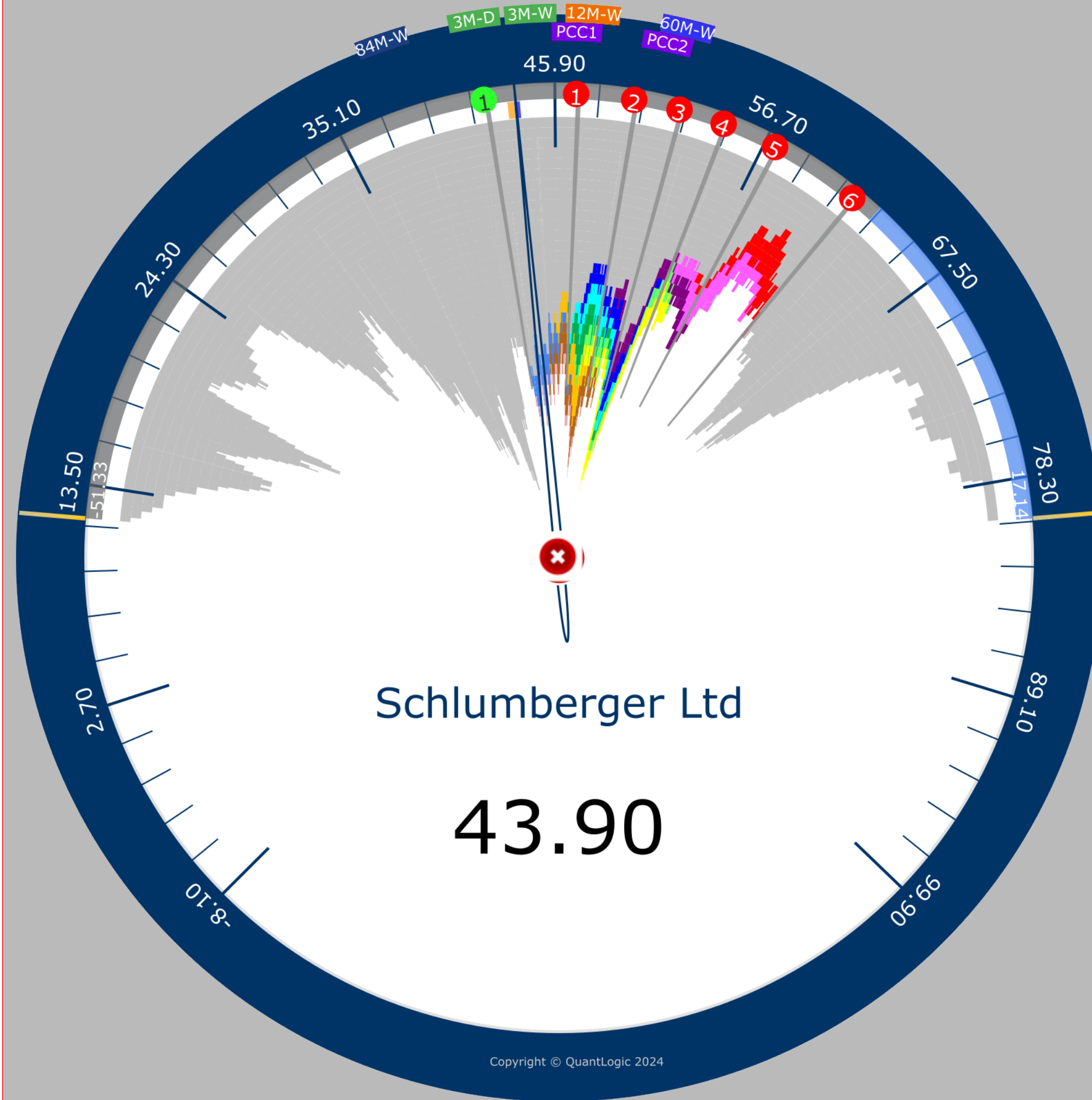
Color Key (Monthly)

- Nov 2023 - Oct 2023 (LHS)
- Nov 2023
- Dec 2023
- Jan 2024
- Feb 2024
- Mar 2024
- Apr 2024
- May 2024
- Jun 2024
- Jul 2024
- Aug 2024
- Sep 2024
- Oct 2024

S&R: Fib Retracements (12 mos)

- 1 46
- 2 48.2
- 3 50.5
- 4 53.2
- 5 57.8
- 1 43.2

84 Months O: 64.62 H: 80.35 L: 11.87 C: 43.67



Schlumberger Ltd

43.90

Copyright © QuantLogic 2024

01 Nov 2017 - 16 Oct 2024

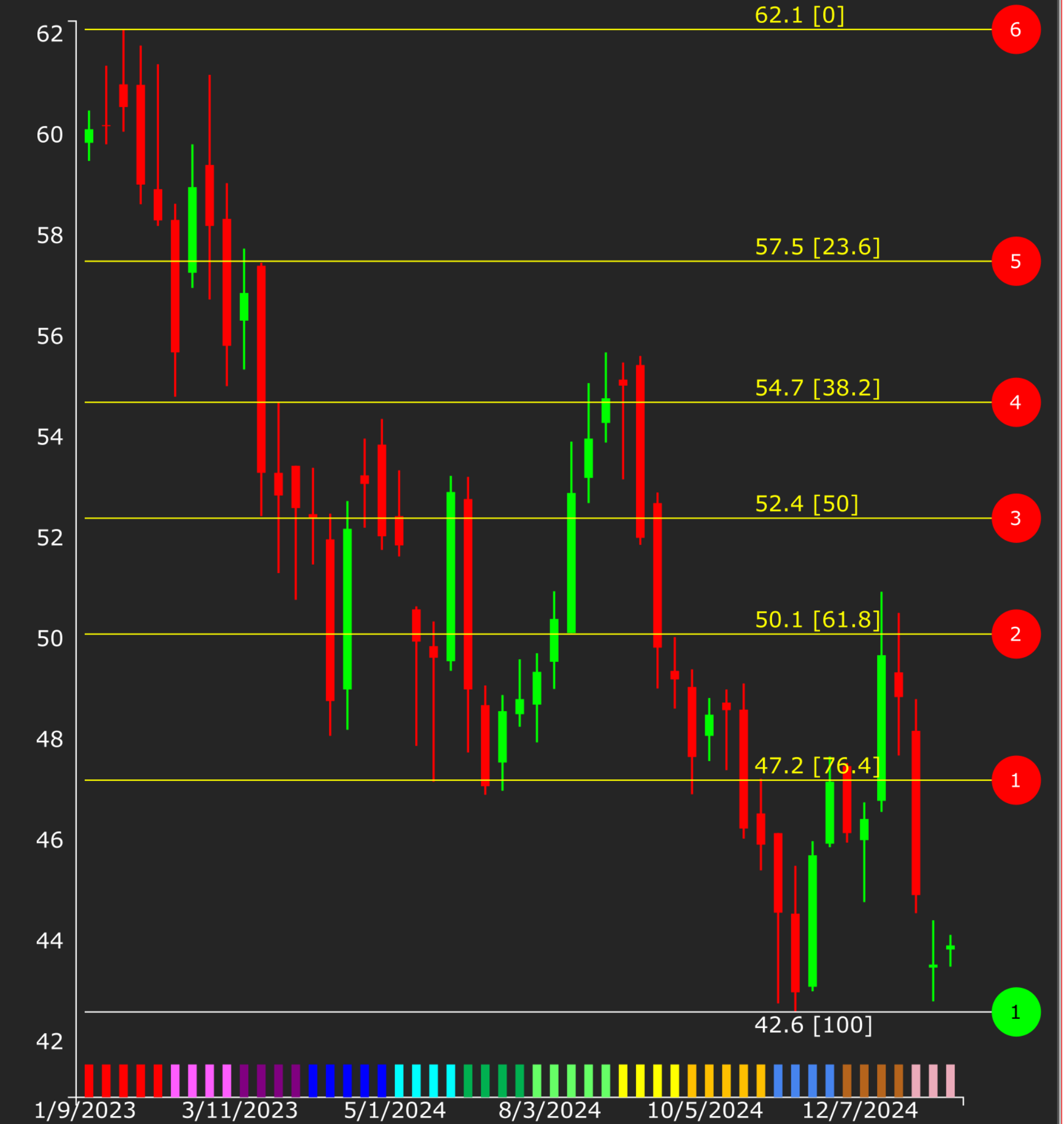
84 Months Weekly Monthly Last 12 84 Months

08/13/24 (D)

12 Months - O: 56 H: 57.75 L: 38.66 C: 43.67

# Schlumberger Ltd [Weekly]

S&R: Fibonacci Retracement 12M



16 Oct 2024 12 Months Weekly

08/13/2024 2:42 AM

**Sector Information**

- SEC Energy
- IG Energy
- IND Energy Equipment & Services
- SYM \$SP500\_101010

**Price Control Point (PCPs)**

- |   |   |
|---|---|
| <span style="background-color: #0056b3; color: white; padding: 2px;">2M-D</span> 293.1  | <span style="background-color: #008000; color: white; padding: 2px;">3M-D</span> 293.2  |
| <span style="background-color: #008000; color: white; padding: 2px;">3M-W</span> 297.7  | <span style="background-color: #ffcc00; color: white; padding: 2px;">6M-D</span> 317.4  |
| <span style="background-color: #ffcc00; color: white; padding: 2px;">6M-W</span> 310.2  | <span style="background-color: #ff8c00; color: white; padding: 2px;">12M-D</span> 306.9 |
| <span style="background-color: #ff8c00; color: white; padding: 2px;">12M-W</span> 310.2 | <span style="background-color: #cc0066; color: white; padding: 2px;">24M-W</span> 310.1 |
| <span style="background-color: #660066; color: white; padding: 2px;">36M-W</span> 307.1 | <span style="background-color: #cc0000; color: white; padding: 2px;">48M-W</span> 307.1 |
| <span style="background-color: #0000ff; color: white; padding: 2px;">60M-W</span> 307.1 | <span style="background-color: #800000; color: white; padding: 2px;">72M-W</span> 301.5 |
| <span style="background-color: #000080; color: white; padding: 2px;">84M-W</span> 301.5 |   |

**Price Control Cluster (PCCs)**

- PCC1 293
- PCC2 307
- PCC3 310

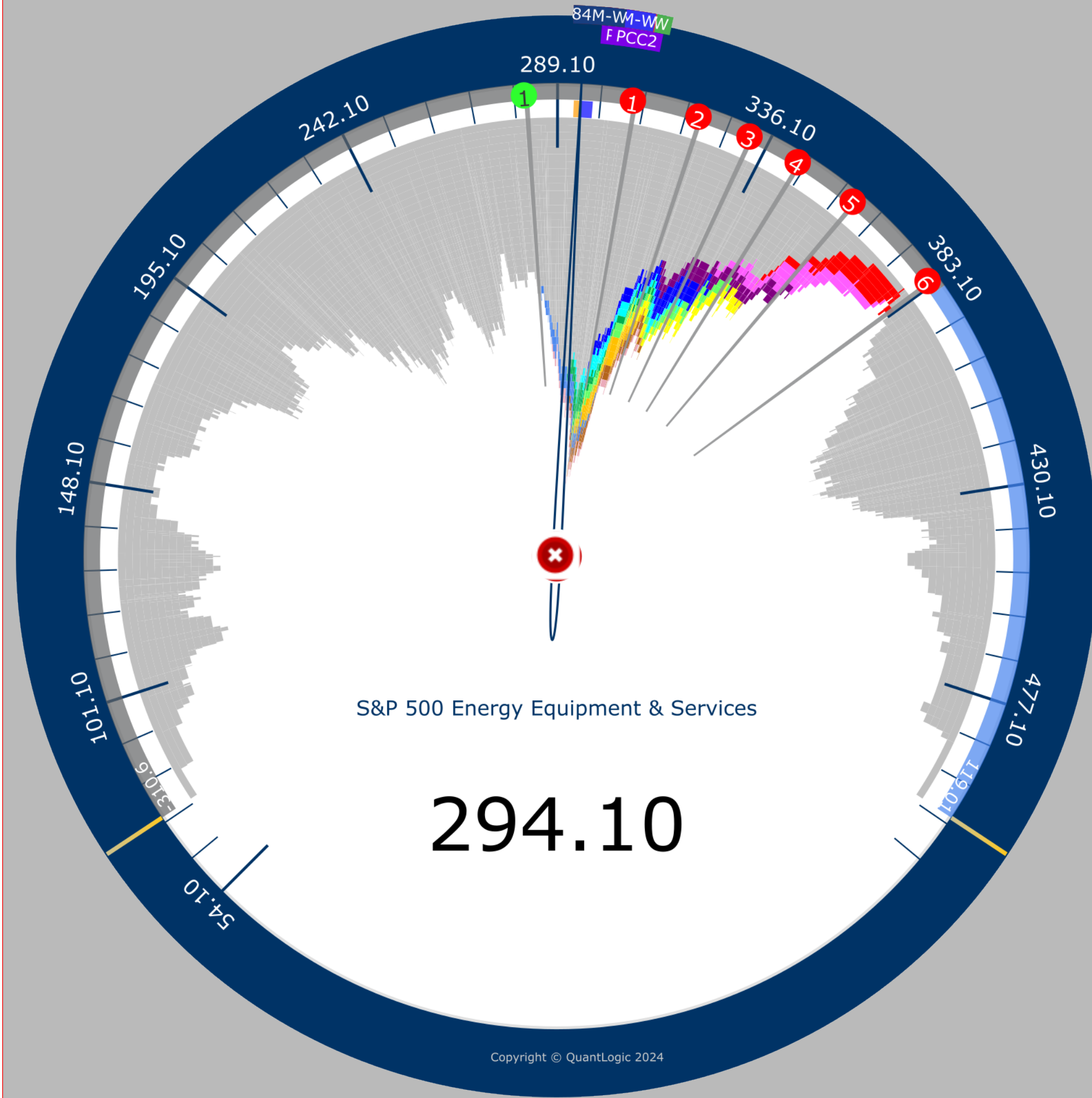
**Color Key (Monthly)**

- Nov 2023 - Oct 2023 (LHS)
- Nov 2023
- Jan 2024
- Feb 2024
- Mar 2024
- Apr 2024
- May 2024
- Jun 2024
- Jul 2024
- Aug 2024
- Sep 2024
- Oct 2024

**S&R: Fib Retracements (12 mos)**

- |   |   |
|---|---|
| <span style="background-color: #ff0000; border-radius: 50%; padding: 2px;">1</span> 299.9 | <span style="background-color: #ff0000; border-radius: 50%; padding: 2px;">2</span> 311.6 |
| <span style="background-color: #ff0000; border-radius: 50%; padding: 2px;">3</span> 323.3 | <span style="background-color: #ff0000; border-radius: 50%; padding: 2px;">4</span> 337.8 |
| <span style="background-color: #ff0000; border-radius: 50%; padding: 2px;">5</span> 361.2 | <span style="background-color: #00ff00; border-radius: 50%; padding: 2px;">1</span> 285.4 |

84 Months O: 403.15 H: 503.71 L: 74.09 C: 292.8



01 Nov 2017 - 16 Oct 2024

84 Months Weekly Monthly Last 12 84 Months 08/13/24 (D)

12 Months - O: 349.61 H: 361.19 L: 262 C: 292.8



16 Oct 2024 12 Months Weekly 08/13/2024 1:59 AM

84 Months O: 31.75 H: 39.78 L: 9.12 C: 36.74

12 Months - O: 34.53 H: 39.05 L: 28.32 C: 36.74

### Sector Information

- SEC** Energy
- IG** Energy
- IND** Energy Equipment & Services
- SYM** BKR

### Price Control Point (PCPs)

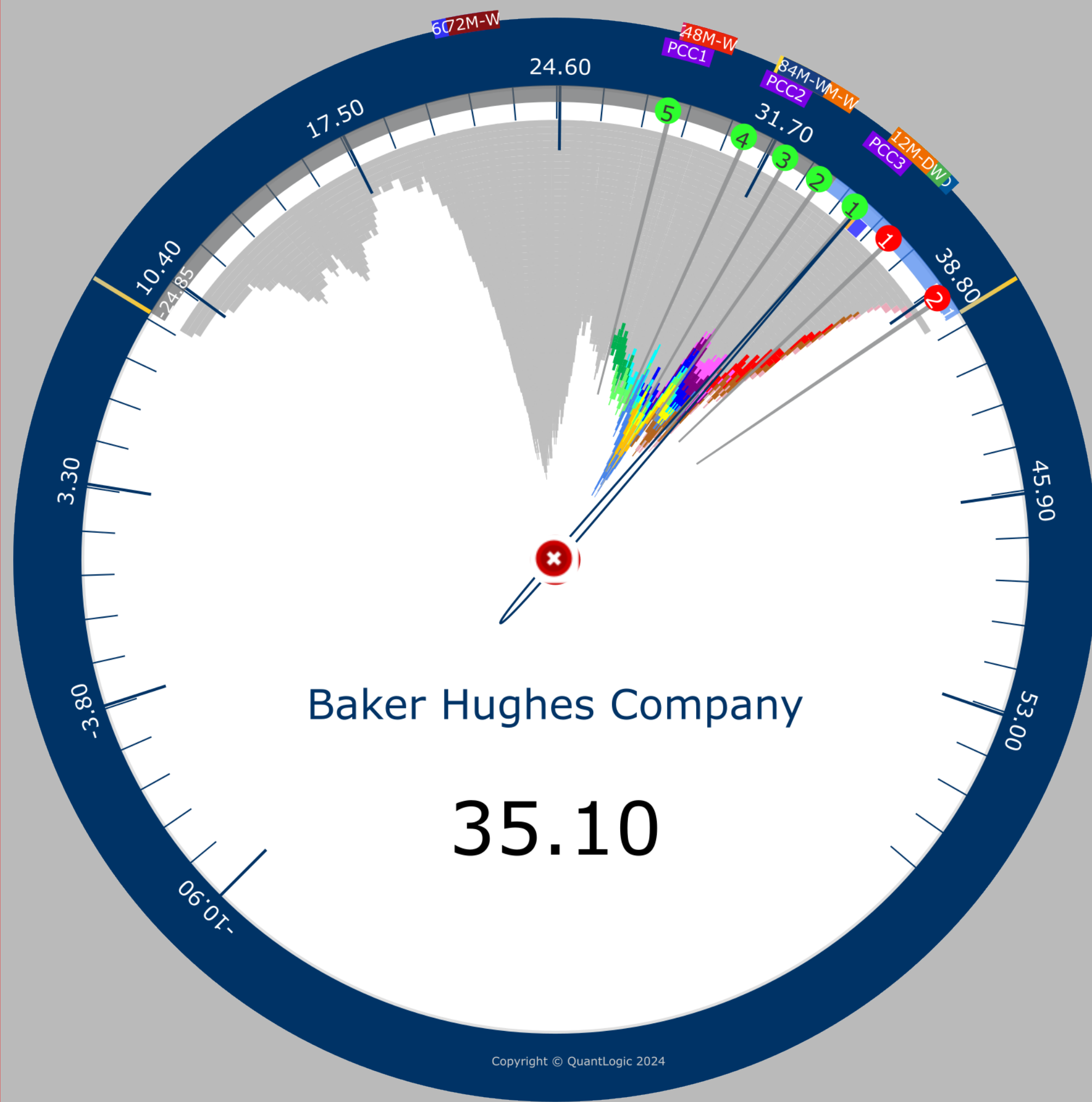
- |                   |                   |
|-------------------|-------------------|
| <b>2M-D</b> 36.2  | <b>3M-D</b> 35    |
| <b>3M-W</b> 34.7  | <b>6M-D</b> 34.9  |
| <b>6M-W</b> 34.7  | <b>12M-D</b> 34   |
| <b>12M-W</b> 33.2 | <b>24M-W</b> 29.4 |
| <b>36M-W</b> 35.3 | <b>48M-W</b> 35.3 |
| <b>60M-W</b> 25.2 | <b>72M-W</b> 22.9 |
| <b>84M-W</b> 22.9 |                   |

### Price Control Cluster (PCCs)

- #### Color Key (Monthly)
- Nov 2023 - Oct 2023 (LHS)
  - Nov 2023
  - Jan 2024
  - Mar 2024
  - May 2024
  - Jul 2024
  - Sep 2024
  - Dec 2023
  - Feb 2024
  - Apr 2024
  - Jun 2024
  - Aug 2024
  - Oct 2024

### S&R: Fib Retracements (12 mos)

- |               |               |
|---------------|---------------|
| <b>1</b> 36.5 | <b>2</b> 39   |
| <b>1</b> 35   | <b>2</b> 33.7 |
| <b>3</b> 32.4 | <b>4</b> 30.9 |

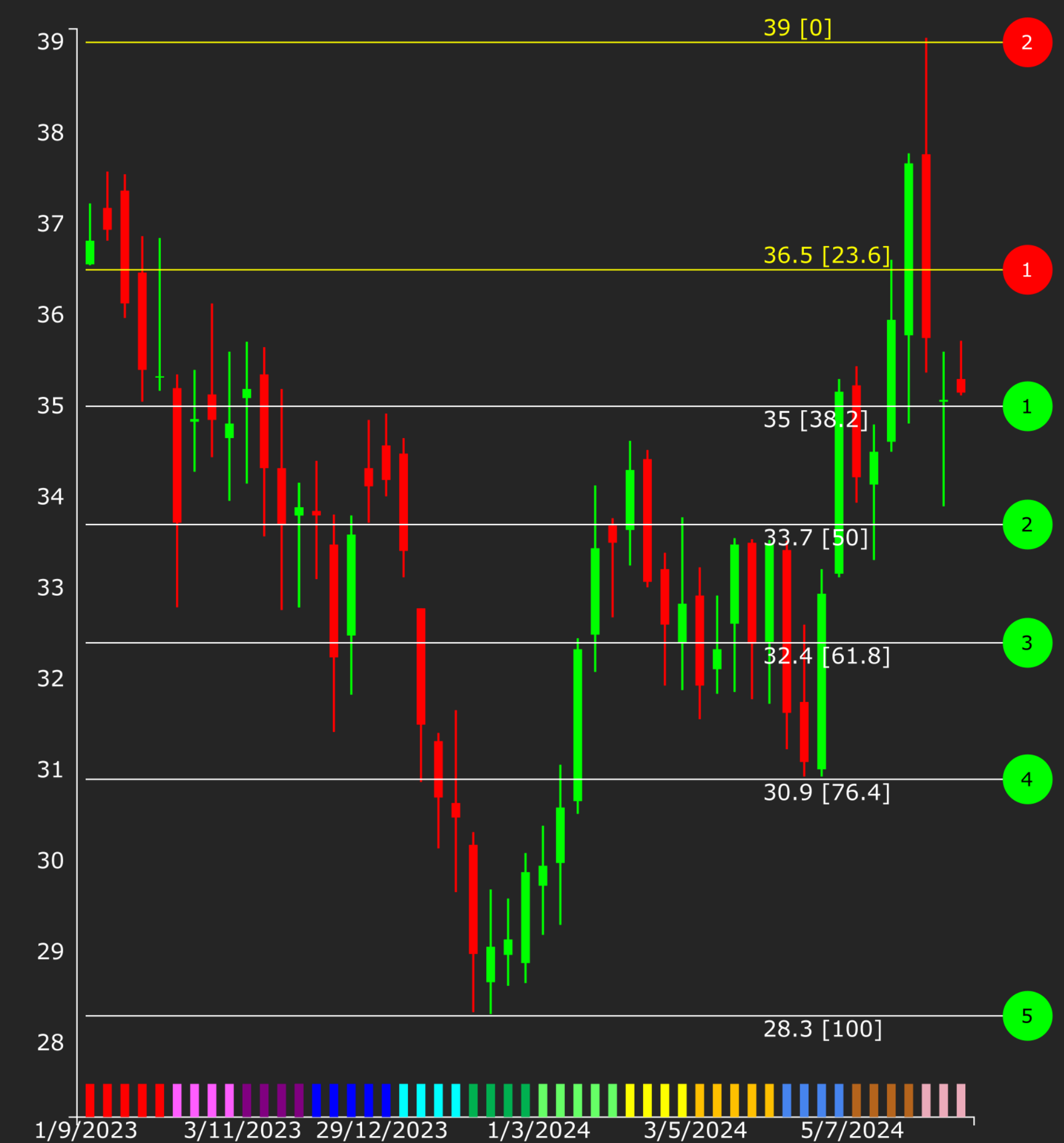


01 Nov 2017 - 16 Oct 2024

84 Months Weekly Monthly Last 12 84 Months 08/13/24 (D)

## Baker Hughes Company [Weekly]

S&R: Fibonacci Retracement 12M



16 Oct 2024 12 Months Weekly 08/13/2024 2:13 AM

84 Months O: 2583.21 H: 5871.41 L: 2191.86 C: 5842.47

12 Months - O: 4201.27 H: 5871.41 L: 4197.74 C: 5842.47

Sector Information

- SEC -
- IG -
- IND -
- SYM \$INX

Price Control Point (PCPs)

2M-D	5714.9	3M-D	5617.8
3M-W	5561.4	6M-D	5472.1
6M-W	5501.3	12M-D	5472.1
12M-W	5501.3	24M-W	3958
36M-W	3958	48M-W	4451.8
60M-W	4451.8	72M-W	4451.8
84M-W	2730.9		

Price Control Cluster (PCCs)

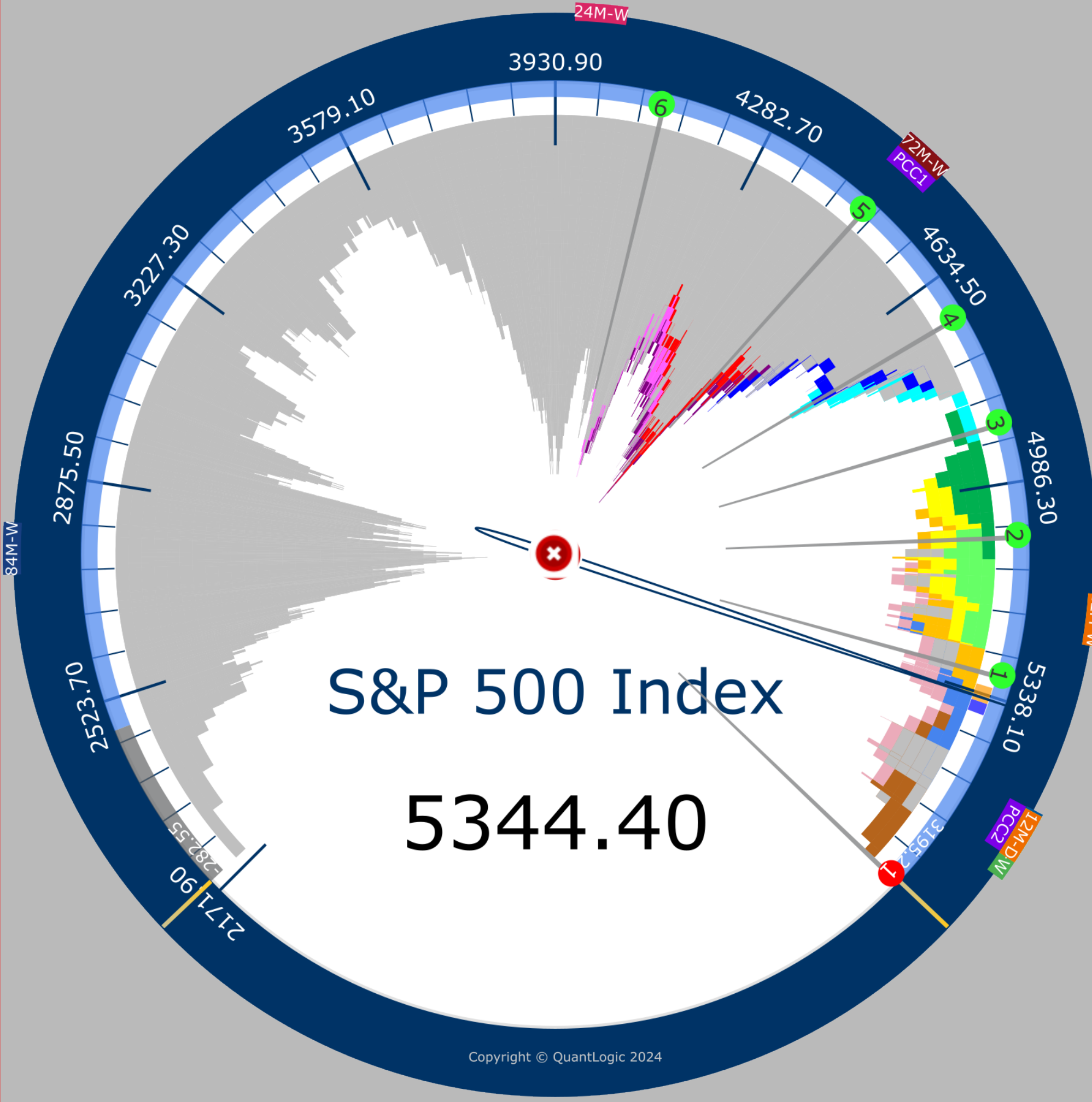
PCC1	4451	PCC2	5720
------	------	------	------

Color Key (Monthly)

Nov 2023 - Oct 2023 (LHS)	
Nov 2023	Dec 2023
Jan 2024	Feb 2024
Mar 2024	Apr 2024
May 2024	Jun 2024
Jul 2024	Aug 2024
Sep 2024	Oct 2024

S&R: Fib Retracements (12 mos)

1	5871.4	1	5476.4
2	5232.1	3	5034.6
4	4837.1	5	4592.7



01 Nov 2017 - 16 Oct 2024

84 Months Weekly Monthly Last 12 84 Months 08/13/24 (D)

# S&P 500 Index [Weekly]

S&R: Fibonacci Retracement 12M



16 Oct 2024 12 Months Weekly 08/13/2024 1:59 AM

84 Months O: 503.07 H: 756.56 L: 172.45 C: 694.68

12 Months - O: 654.91 H: 756.56 L: 603.35 C: 694.68

### Sector Information

SEC Energy  
SYM \$SP500\_10

### Price Control Point (PCPs)

2M-D	676.7	3M-D	683.5
3M-W	683.6	6M-D	699.8
6M-W	687.5	12M-D	638.8
12M-W	687.5	24M-W	686.7
36M-W	665.5	48M-W	665.5
60M-W	665.5	72M-W	665.5
84M-W	665.5		

### Price Control Cluster (PCCs)

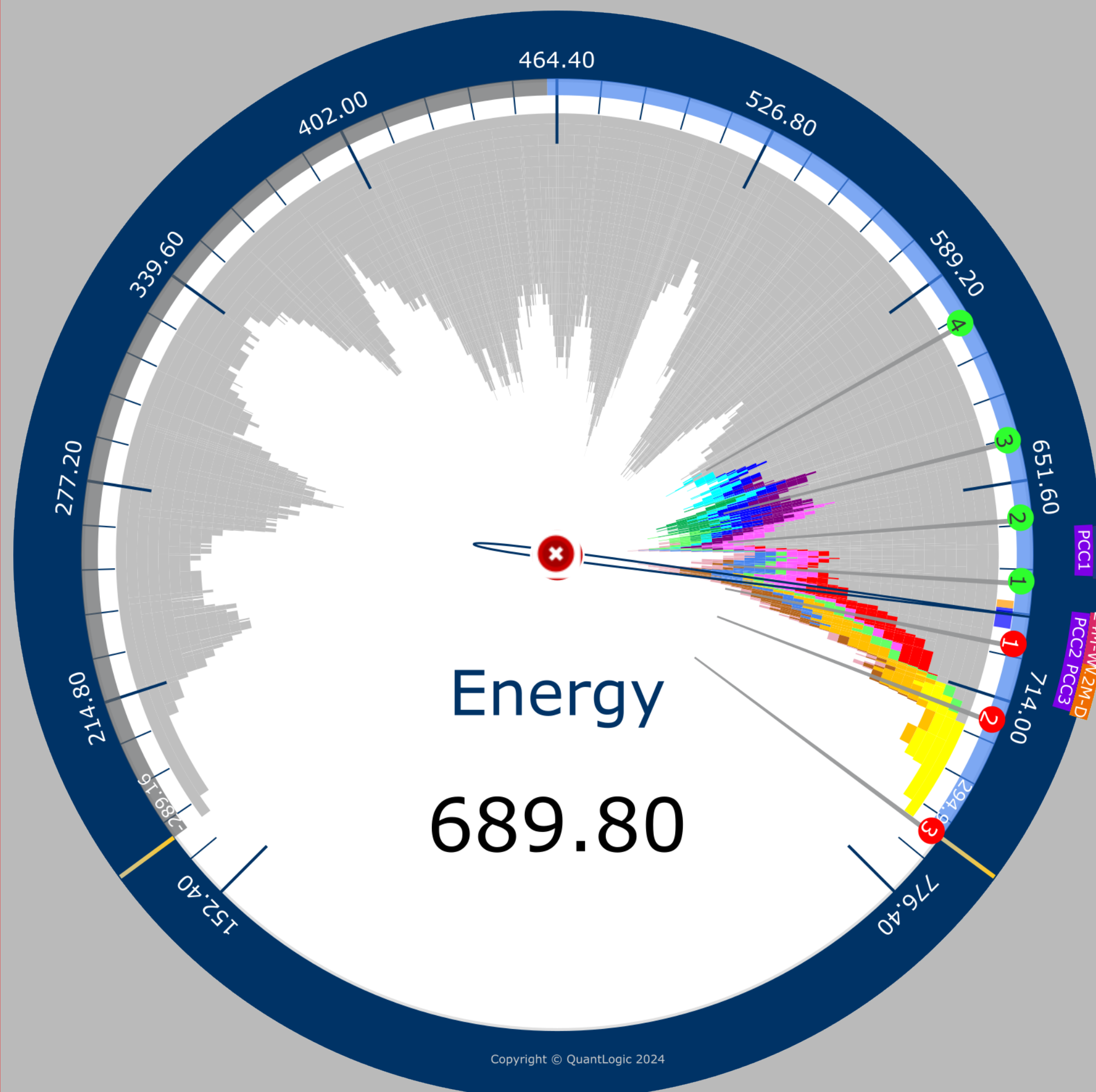
PCC1 665      PCC2 685

### Color Key (Monthly)

Nov 2023 - Oct 2023 (LHS)	
Nov 2023	Dec 2023
Jan 2024	Feb 2024
Mar 2024	Apr 2024
May 2024	Jun 2024
Jul 2024	Aug 2024
Sep 2024	Oct 2024

### S&R: Fib Retracements (12 mos)

1 698	2 720.4
3 756.6	1 680
2 661.9	3 639.5

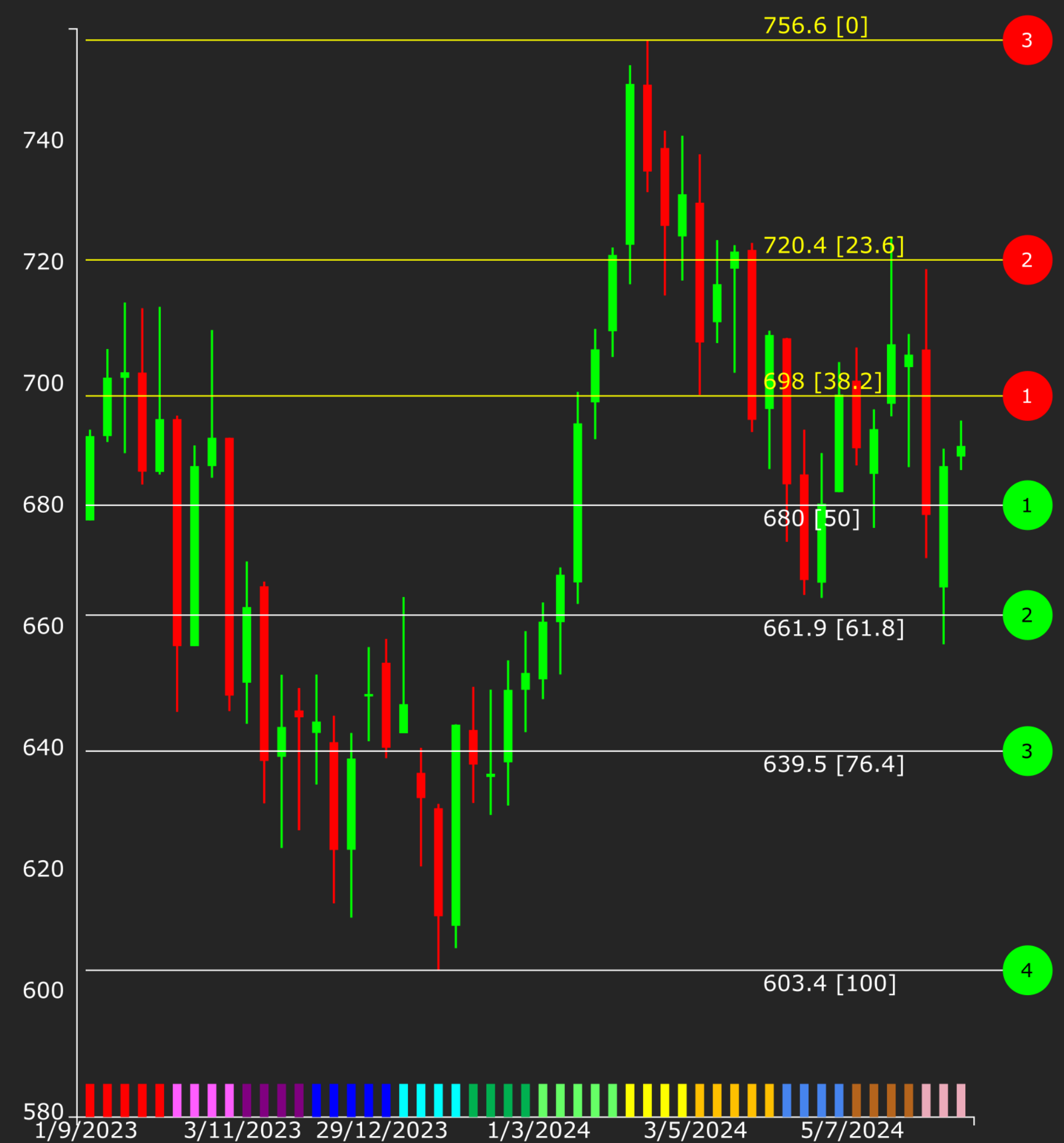


01 Nov 2017 - 16 Oct 2024

84 Months Weekly Monthly Last 12 84 Months 08/13/24 (D)

## Energy [Weekly]

S&R: Fibonacci Retracement 12M



16 Oct 2024 12 Months Weekly 08/13/2024 2:00 AM



84 Months O: 505.46 H: 756.56 L: 172.54 C: 694.68

12 Months - O: 654.78 H: 756.56 L: 603.35 C: 694.68

### Sector Information

SEC Energy  
IG Energy  
SYM \$SP500\_1010

### Price Control Point (PCPs)

2M-D	690	3M-D	680.4
3M-W	687.5	6M-D	698.5
6M-W	687.5	12M-D	699.8
12M-W	686.8	24M-W	686.7
36M-W	686.7	48M-W	686.7
60M-W	686.7	72M-W	686.7
84M-W	686.7		

### Price Control Cluster (PCCs)

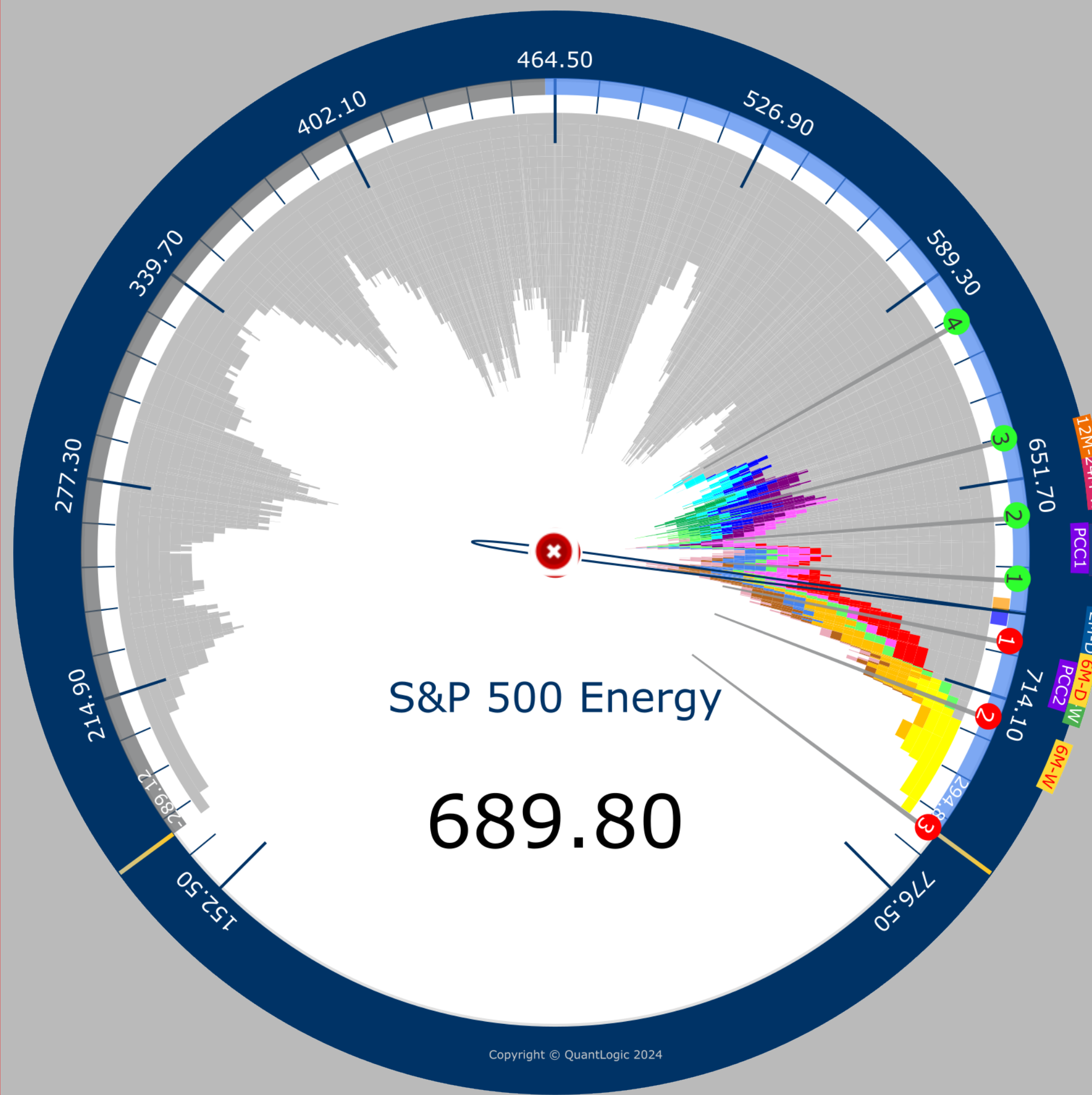
PCC1 687

### Color Key (Monthly)

Nov 2023 - Oct 2023 (LHS)	
Nov 2023	Dec 2023
Jan 2024	Feb 2024
Mar 2024	Apr 2024
May 2024	Jun 2024
Jul 2024	Aug 2024
Sep 2024	Oct 2024

### S&R: Fib Retracements (12 mos)

1 698	2 720.4
3 756.6	1 680
2 661.9	3 639.5

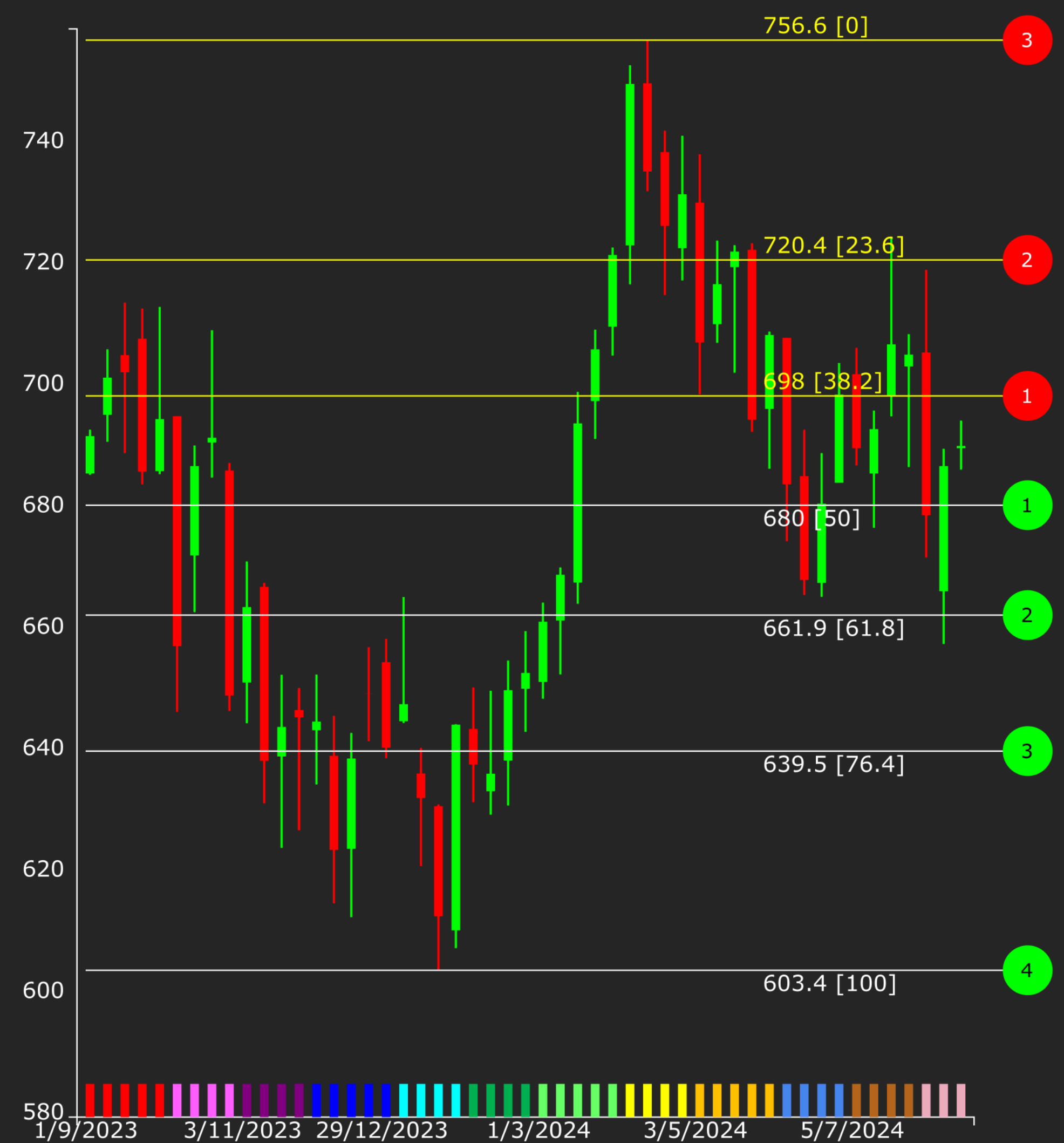


01 Nov 2017 - 16 Oct 2024

84 Months Weekly Monthly Last 12 84 Months 08/13/24 (D)

## S&P 500 Energy [Weekly]

S&R: Fibonacci Retracement 12M



16 Oct 2024 12 Months Weekly 08/13/2024 1:59 AM

84 Months O: 43.15 H: 57.86 L: 4.25 C: 29.3

12 Months - O: 39.59 H: 41.56 L: 27.52 C: 29.3

### Sector Information

- SEC** Energy
- IG** Energy
- IND** Energy Equipment & Services
- SYM** HAL

### Price Control Point (PCPs)

- |                   |                   |
|-------------------|-------------------|
| <b>2M-D</b> 29.8  | <b>3M-D</b> 31.2  |
| <b>3M-W</b> 31.1  | <b>6M-D</b> 33.8  |
| <b>6M-W</b> 33.8  | <b>12M-D</b> 34.4 |
| <b>12M-W</b> 36.8 | <b>24M-W</b> 38.3 |
| <b>36M-W</b> 36.9 | <b>48M-W</b> 36.9 |
| <b>60M-W</b> 36.9 | <b>72M-W</b> 31.1 |
| <b>84M-W</b> 36.9 |                   |

### Price Control Cluster (PCCs)

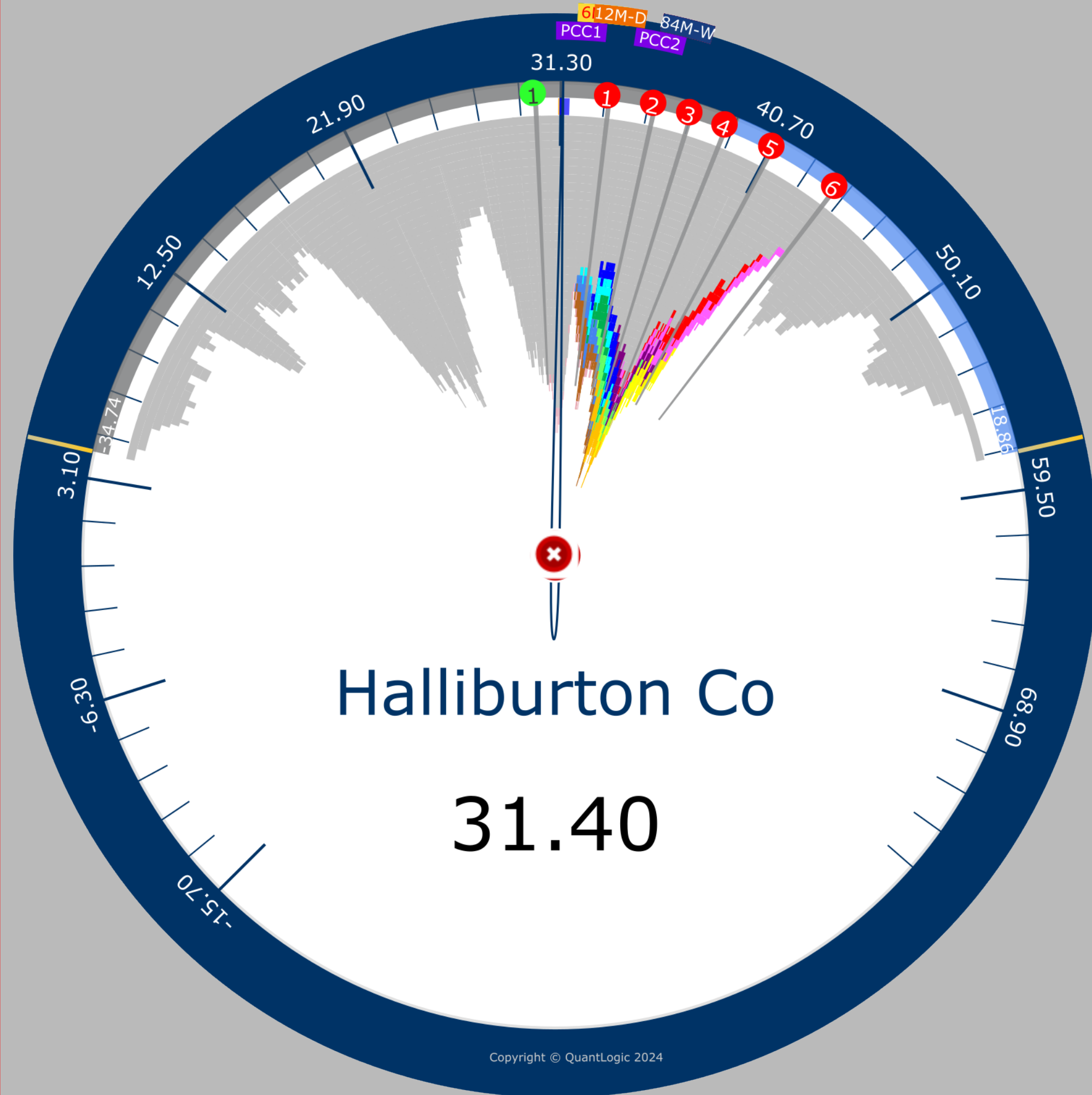
- PCC1** 31
- PCC2** 36

### Color Key (Monthly)

- Nov 2023 - Oct 2023 (LHS)
- Nov 2023
- Dec 2023
- Jan 2024
- Feb 2024
- Mar 2024
- Apr 2024
- May 2024
- Jun 2024
- Jul 2024
- Aug 2024
- Sep 2024
- Oct 2024

### S&R: Fib Retracements (12 mos)

- 1** 30.8
- 2** 32.9
- 3** 34.5
- 4** 36.2
- 5** 38.2
- 6** 41.6



01 Nov 2017 - 16 Oct 2024

84 Months Weekly Monthly Last 12 84 Months 08/13/24 (D)

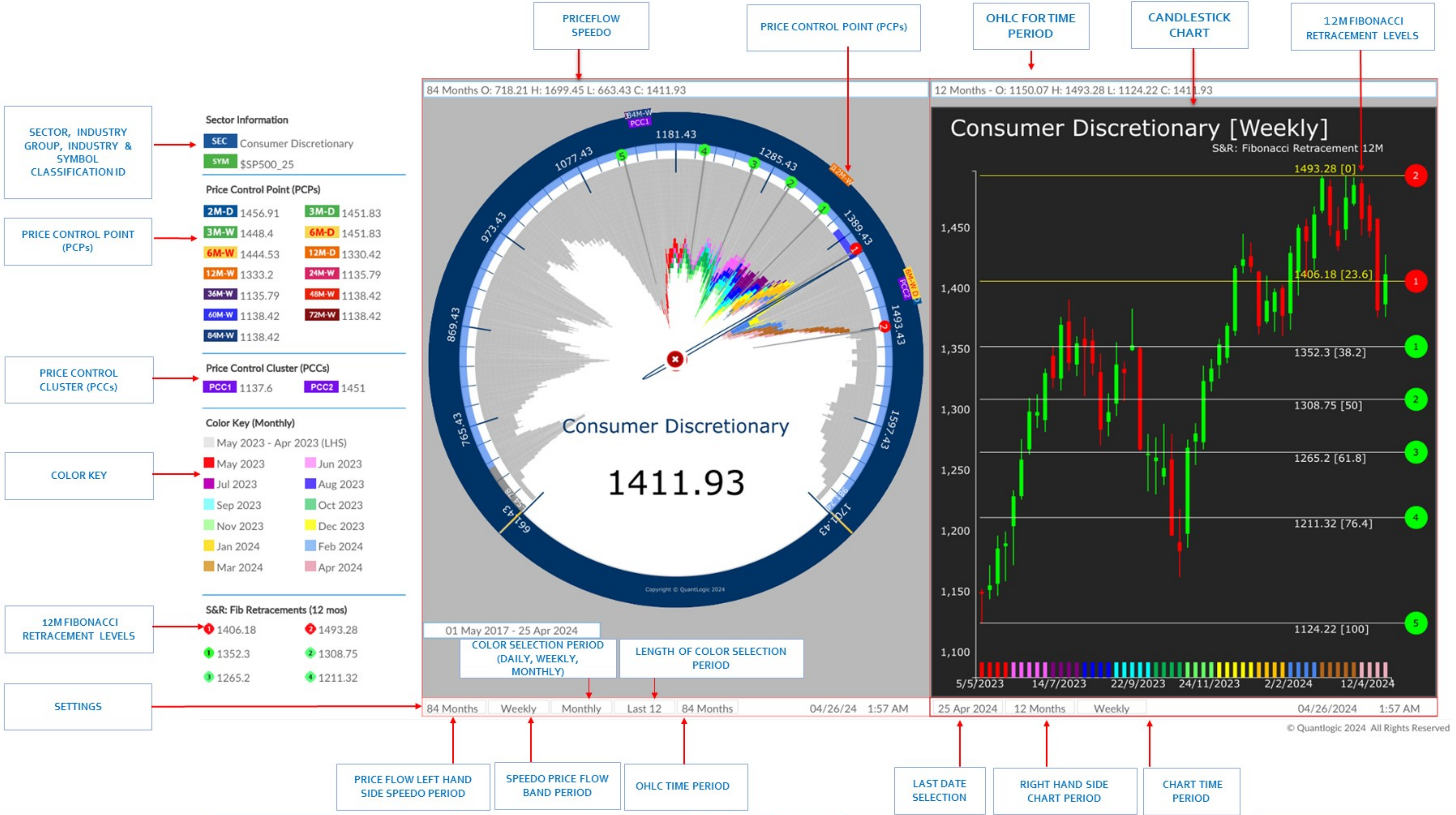
## Halliburton Co [Weekly]

S&R: Fibonacci Retracement 12M



16 Oct 2024 12 Months Weekly 08/13/2024 2:26 AM

# MARKET PRICE FLOW ANALYSIS : 84M WEEKLY SPEEDO VS 12M WEEKLY CHART



**Sector Information**  
**SEC** Consumer Discretionary  
**SYM** \$SP500\_25

**Price Control Point (PCPs)**

2M-D	1456.91	3M-D	1451.83
3M-W	1448.4	6M-D	1451.83
6M-W	1444.53	12M-D	1330.42
12M-W	1333.2	24M-W	1135.79
36M-W	1135.79	48M-W	1138.42
60M-W	1138.42	72M-W	1138.42
84M-W	1138.42		

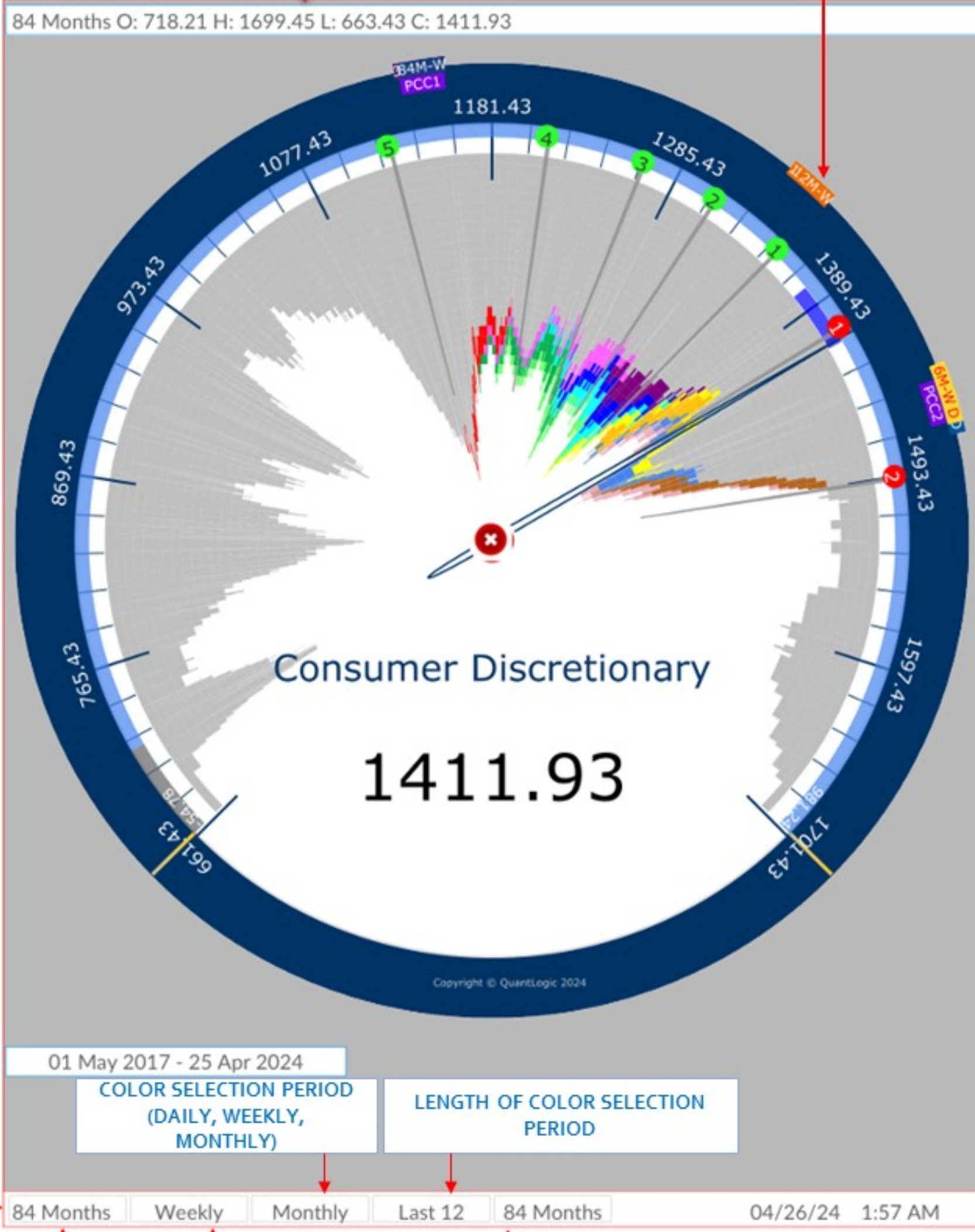
**Price Control Cluster (PCCs)**  
**PCC1** 1137.6    **PCC2** 1451

**Color Key (Monthly)**

May 2023	Jun 2023
Jul 2023	Aug 2023
Sep 2023	Oct 2023
Nov 2023	Dec 2023
Jan 2024	Feb 2024
Mar 2024	Apr 2024

**S&R: Fib Retracements (12 mos)**

1	1406.18	2	1493.28
3	1352.3	4	1308.75
5	1265.2	6	1211.32



If you like to discuss Quantlogic Edge further, [Click here to book a Zoom meeting](#)



51 Ashley Gardens, Ambrosden Avenue,  
London SW1P 1QF United Kingdom

Website: [quantlogic.com](http://quantlogic.com)

Mail: [info@quantlogic.com](mailto:info@quantlogic.com)

Tel: (UK) +44 (0)20 3289 2234

(US) +1 646 374 4234

## Research Disclaimer:

### Important Disclosure Statement from Quantlogic Ltd



This document is issued by Quantlogic Limited solely for its clients. It is for professional clients only. It may not be reproduced, redistributed or passed to any other person in whole or in part for any purpose without written consent of Quantlogic Ltd. This material is not directed at you if Quantlogic Ltd is prohibited or restricted by any legislation or regulation in any jurisdiction from making it available to you.

This document is provided for information purposes only and should not be regarded as an offer, solicitation, invitation, inducement or recommendation relating to the subscription, purchase or sale of any security or other financial instrument. This document does not constitute, and should not be interpreted as, investment advice. It is accordingly recommended that you should seek independent advice from a suitably qualified professional advisor before taking any decisions in relation to the investments detailed herein. All expressions of opinions and estimates constitute a judgement and, unless otherwise stated, are those of the author and the research department of Quantlogic Ltd only, and are subject to change without notice. Quantlogic Ltd is under no obligation to update the information contained herein. Whilst Quantlogic Ltd has taken all reasonable care to ensure that the information contained in this document is not untrue or misleading at the time of publication, Quantlogic Ltd cannot guarantee its accuracy or completeness, and you should not act on it without first independently verifying its contents. This document is not guaranteed to be a complete statement or summary of any securities, markets, reports or developments referred to herein. No representation or warranty either expressed or implied is made, nor responsibility of any kind is accepted, by Quantlogic Ltd or any of its respective directors, officers, employees or analysts either as to the accuracy or completeness of any information contained in this document nor should it be relied on as such. No liability whatsoever is accepted by Quantlogic Ltd or any of its respective directors, officers, employees or analysts for any loss, whether direct or consequential, arising whether directly or indirectly as a result of the recipient acting on the content of this document, including, without limitation, lost profits arising from the use of this document or any of its contents.

This document is provided with the understanding that Quantlogic Ltd is not acting in a fiduciary capacity and it is not a personal recommendation to you. Investing in securities entails risks. Past performance is not necessarily a guide to future performance. The value of and the income produced by products may fluctuate, so that an investor may get back less than he invested. Investments in the entities and/or the securities or other financial instruments referred to are not suitable for all investors and this document should not be relied upon in substitution for the exercise of independent judgment in relation to any such investment. The stated price of any securities mentioned herein will generally be the closing price at the end of any of the three business days immediately prior to the publication date on this document. This stated price is not a representation that any transaction can be effected at this price.

Quantlogic Ltd and its respective analysts are remunerated for providing investment research to professional investors, corporations, other research institutions and consultancy houses. Quantlogic Ltd, or its respective directors, officers, employees and clients may have or take positions in the securities or entities mentioned in this document. Any of these circumstances could create, or be perceived as creating, conflicts of interest. Quantlogic Ltd analysts are not censored in any way and are free to express their personal opinions. As a result, Quantlogic Ltd may have issued other documents that are inconsistent with and reach different conclusions from, the information contained in this document. Those documents reflect the different assumptions, views and analytical methods of their authors. No director, officer or employee of Quantlogic Ltd is on the board of directors of any company referenced herein and no one at any such referenced company is on the board of directors of Quantlogic Ltd.

Quantlogic Ltd is an appointed representative of Messels Ltd which is authorised and regulated by the Financial Conduct Authority. Residents of the United Kingdom should seek specific professional financial and investment advice from a stockbroker, banker, solicitor, accountant or other independent professional adviser authorised pursuant to the Financial Services and Markets Act 2000.

The content of this report is covered by our Policy of Independence which may be viewed at [www.Quantlogic.com](http://www.Quantlogic.com)

The performance history of research recommendations over the last 12 months is available to clients on request.

#### Analysts' Certification

The analysts involved in the production of this document hereby certify that the views expressed in this document accurately reflect their personal views about the securities mentioned herein. The analysts point out that they may buy, sell or already have taken positions in the securities, and related financial instruments, mentioned in this document.