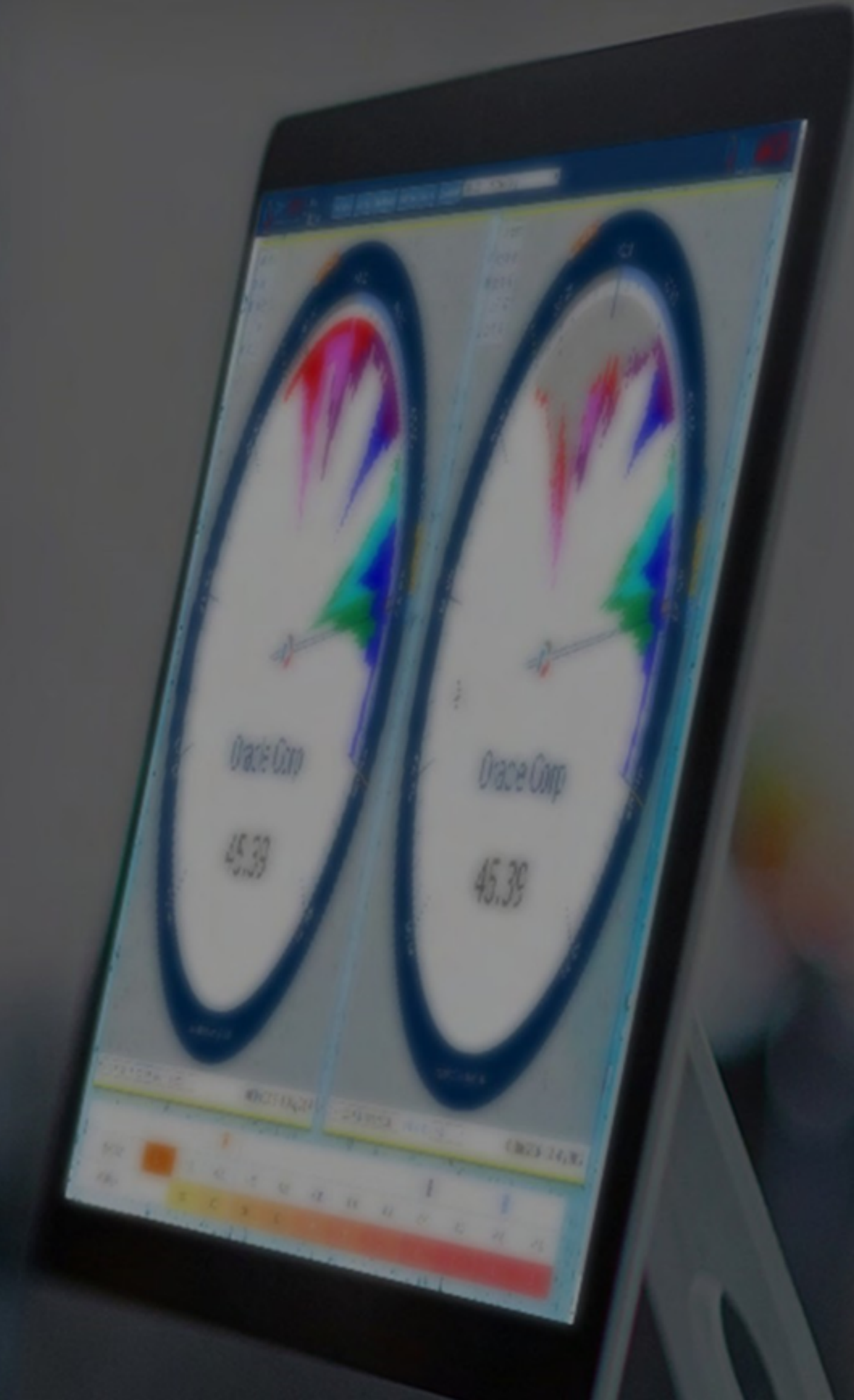




QUANTLOGIC
A quantum leap in equity analysis

Quantlogic Edge Sector Analytics Report

Energy Sector
Energy Equipment & Services Industry

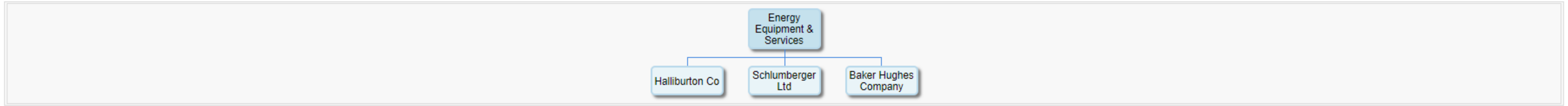




Indicator	Sector Analytics	Category	Industry
Speedo Settings	LHS: 2 Months-Daily (Speedo)	RHS: 2 Months-Daily (Chart)	Color Key: Last 6 - Weekly
Sector	Energy	Industry	Energy Equipment Services
Stock Exchange	New York Stock Exchange (NYSE)	Symbol list	S&P500, Data drawn from 500 Symbols

Sector Classification

IDX S&P500 Index
 SEC Energy
 IG Energy
 IND Energy Equipment & Services
 Rank #



Sector Analytics - Relative Performance Analytics

Relative performance of various time periods, Ranging between 1 day and 84 Months.

Sector Energy
 Industry Group Energy
 Industry Energy Equipment & Services
 Symbol (Industry) \$SP500_101010
 Market S&P500

Symbol	Column1	Category	Date	Close	Rank	1D	5D	10D	MTD	1 mos	2 mos	3 mos	6 mos	12 mos	24 mos	36 mos	48 mos	60 mos	72 mos	84 mos	NER Date
BKR	Baker Hughes Compan		12/20/2024	40.33	1	0.29	-2.33	-0.42	-6.22	-6.13	9.7	7.09	17.31	-6.04	-11.24	41.95	30.53	-23.45	-44.99	-94.44	01/30/2025
\$INX	S&P 500 Index	Index	12/20/2024	5930.85	2	0	0	0	0	0	0	0	0	0	0	0	0	0	0	0	N.A
\$SP500_1010	Energy	IG	12/20/2024	638.92	4	-0.21	-3.59	-5.07	-10.08	-12.07	-9.23	-9.67	-13.04	-26.24	-54.23	27.95	57.85	-42.57	-88.51	-96.7	N.A
\$SP500_10	Energy	Sector	12/20/2024	638.92	3	-0.21	-3.59	-5.07	-10.08	-12.07	-9.23	-9.67	-13.04	-26.24	-54.29	27.95	57.85	-42.58	-88.51	-96.7	N.A
HAL	Halliburton Co		12/20/2024	25.98	5	-0.24	-7.39	-8.91	-16.78	-14.97	-9.46	-15.82	-29.2	-53.82	-81.86	-10.86	-27.81	-78.9	-142.59	-164.57	01/22/2025
\$SP500_101010	Energy Equipment &	Industry	12/20/2024	271.36	6	-0.58	-5.27	-5.79	-12.41	-12.02	-5.62	-9.99	-15.21	-42.95	-65.26	8.95	3.73	-80.09	-131.1	-155.05	N.A
SLB	Schlumberger Ltd		12/20/2024	36.83	7	-1.33	-6.42	-8.19	-14.5	-14.76	-13.25	-17.65	-25.27	-54.84	-80.05	-1.23	5.19	-92	-139.09	-163.98	01/17/2025
Stocks Count		3 / 7	Stocks Outperform Count			1	0	0	0	0	1	1	1	0	0	1	2	0	0	0	

2 Months O: 38.11 H: 45.17 L: 37.54 C: 40.33

2 Months - O: 38.11 H: 45.17 L: 37.54 C: 40.33

Sector Information

- SEC Energy
- IG Energy
- IND Energy Equipment & Services
- SYM BKR

Price Control Point (PCPs)

- 2M-D 43.6
- 3M-D 43.6
- 3M-W 37.3
- 6M-D 34.9
- 6M-W 34.7
- 12M-D 32.3
- 12M-W 32.3
- 24M-W 34.7
- 36M-W 35.3
- 48M-W 35.3
- 60M-W 35.3
- 72M-W 22.9
- 84M-W 22.9

Price Control Cluster (PCCs)

- PCC1 35.3

Color Key (Weekly)

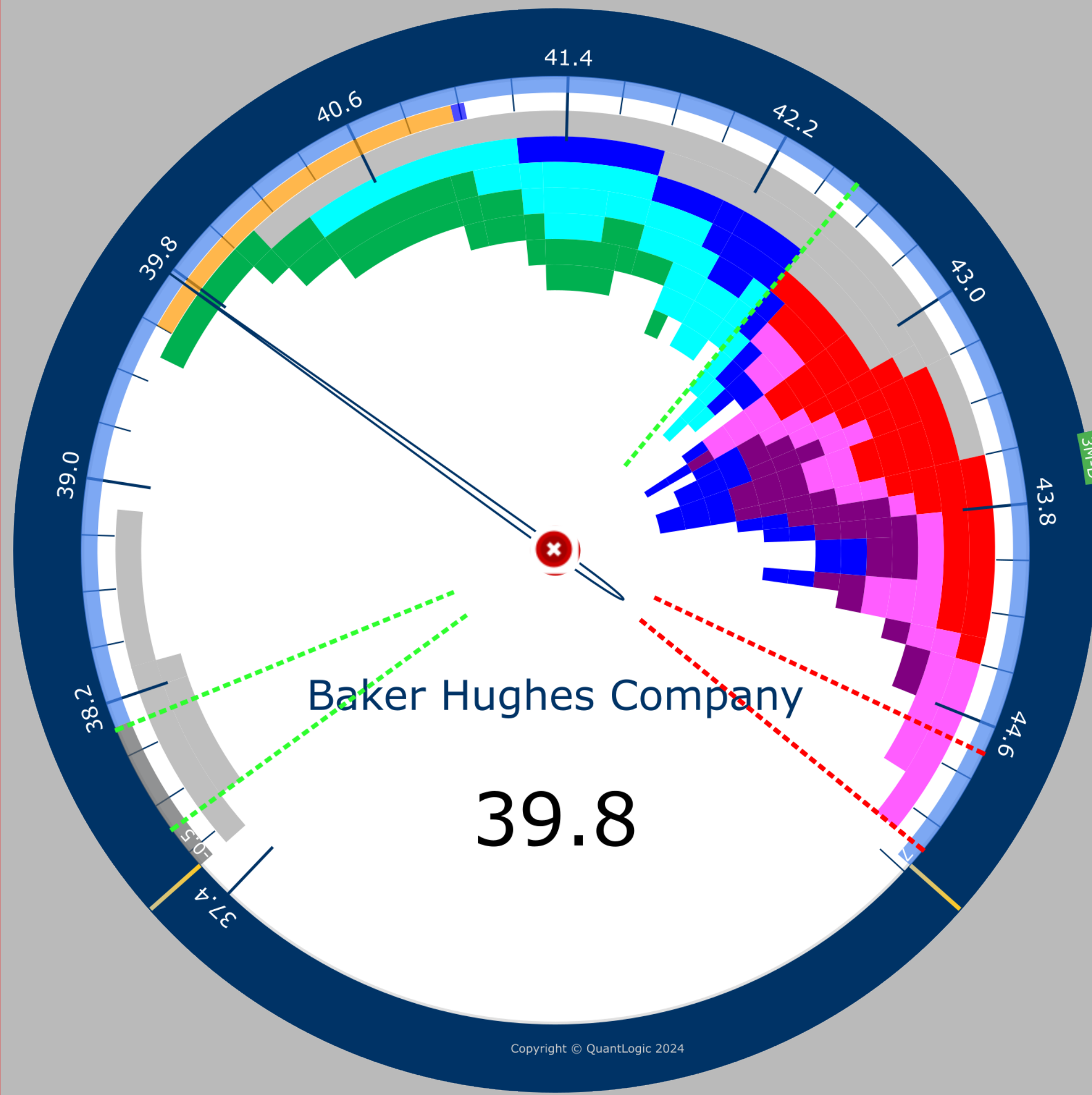
- 01 Nov 2024 - 15 Nov 2024
- 15 Nov 2024
- 22 Nov 2024
- 29 Nov 2024
- 06 Dec 2024
- 13 Dec 2024
- 20 Dec 2024

Monthly Quantlogic Distribution (QD)

- 42.5
- 44.7
- 38.1
- 45.1
- 37.7
- 45.1

01 Nov 2024 - 20 Dec 2024

2 Months Daily Weekly Last 6 2 Months 12/20/24 12:53 AM



Baker Hughes Company [Daily]



20 Dec 2024 2 Months Daily 12/20/24 12:53 AM

2 Months O: 5723.22 H: 6099.97 L: 5696.51 C: 5930.85

2 Months - O: 5723.22 H: 6099.97 L: 5696.51 C: 5930.85

Sector Information

- SEC -
- IG -
- IND -
- SYM \$INX

Price Control Point (PCPs)

- 2M-D 6006.1
- 3M-D 5869.1
- 3M-W 5813.3
- 6M-D 5617.8
- 6M-W 5564.4
- 12M-D 5472.1
- 12M-W 5501.3
- 24M-W 4133.1
- 36M-W 3958
- 48M-W 4451.8
- 60M-W 4451.8
- 72M-W 4451.8
- 84M-W 2730.9

Price Control Cluster (PCCs)

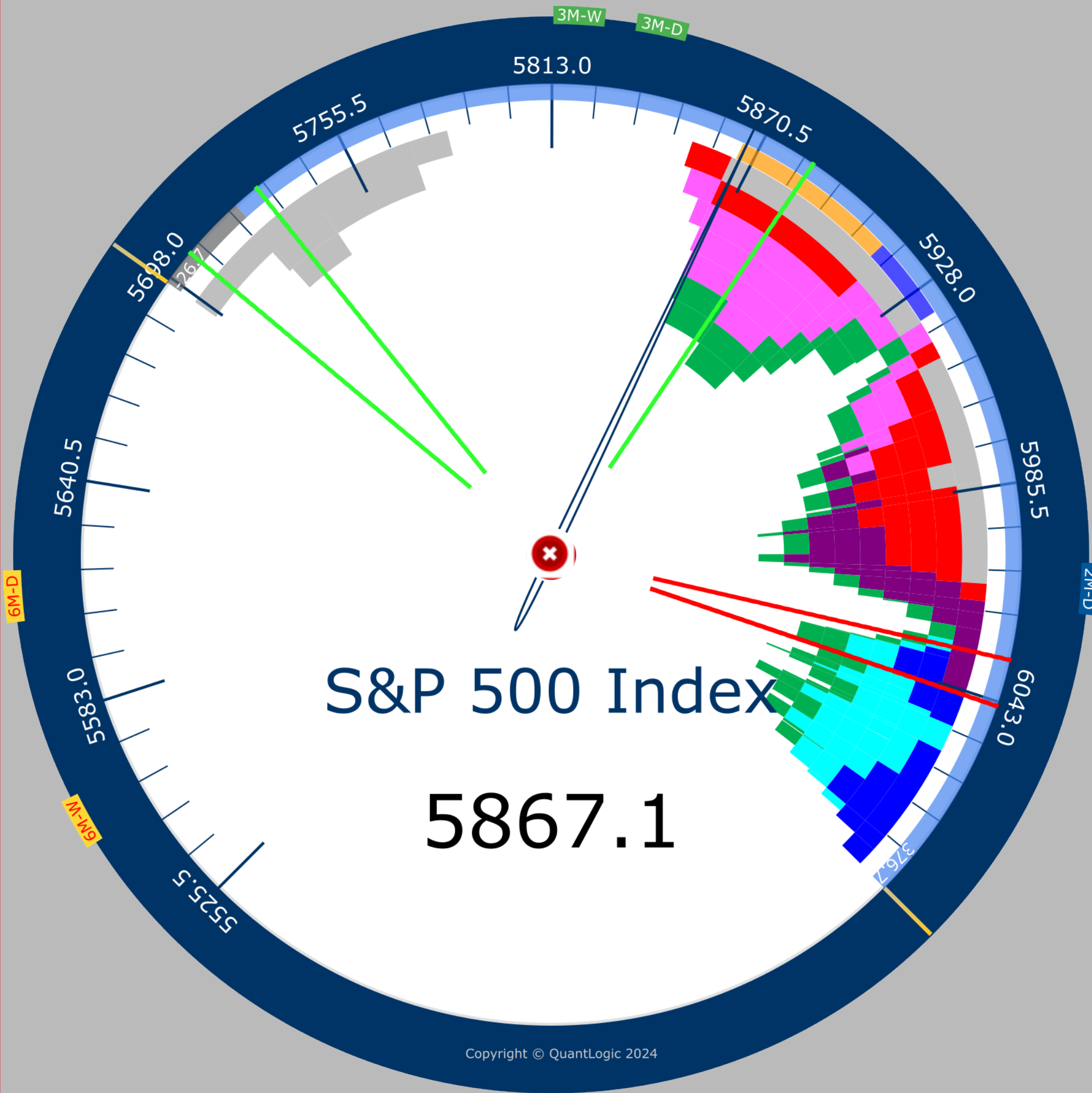
- PCC1 4451.9

Color Key (Weekly)

- 01 Nov 2024 - 15 Nov 2024
- 15 Nov 2024
- 22 Nov 2024
- 29 Nov 2024
- 06 Dec 2024
- 13 Dec 2024
- 20 Dec 2024

Monthly Quantlogic Distribution (QD)

- 5884.8
- 6031.7
- 5730.2
- 6044.1
- 5706.2
- 6044.1



01 Nov 2024 - 20 Dec 2024

2 Months Daily Weekly Last 6 2 Months 12/20/24 12:42 AM



20 Dec 2024 2 Months Daily 12/20/2024 12:42 AM

2 Months O: 691.33 H: 743.93 L: 631.66 C: 638.92

2 Months - O: 691.33 H: 743.93 L: 631.66 C: 638.92

Sector Information

SEC Energy
SYM \$SP500_10

Price Control Point (PCPs)

2M-D	723.2	3M-D	694
3M-W	697.7	6M-D	693.4
6M-W	691.3	12M-D	693
12M-W	692.2	24M-W	691
36M-W	691	48M-W	691
60M-W	691	72M-W	691
84M-W	691		

Price Control Cluster (PCCs)

PCC1 691.9

Color Key (Weekly)

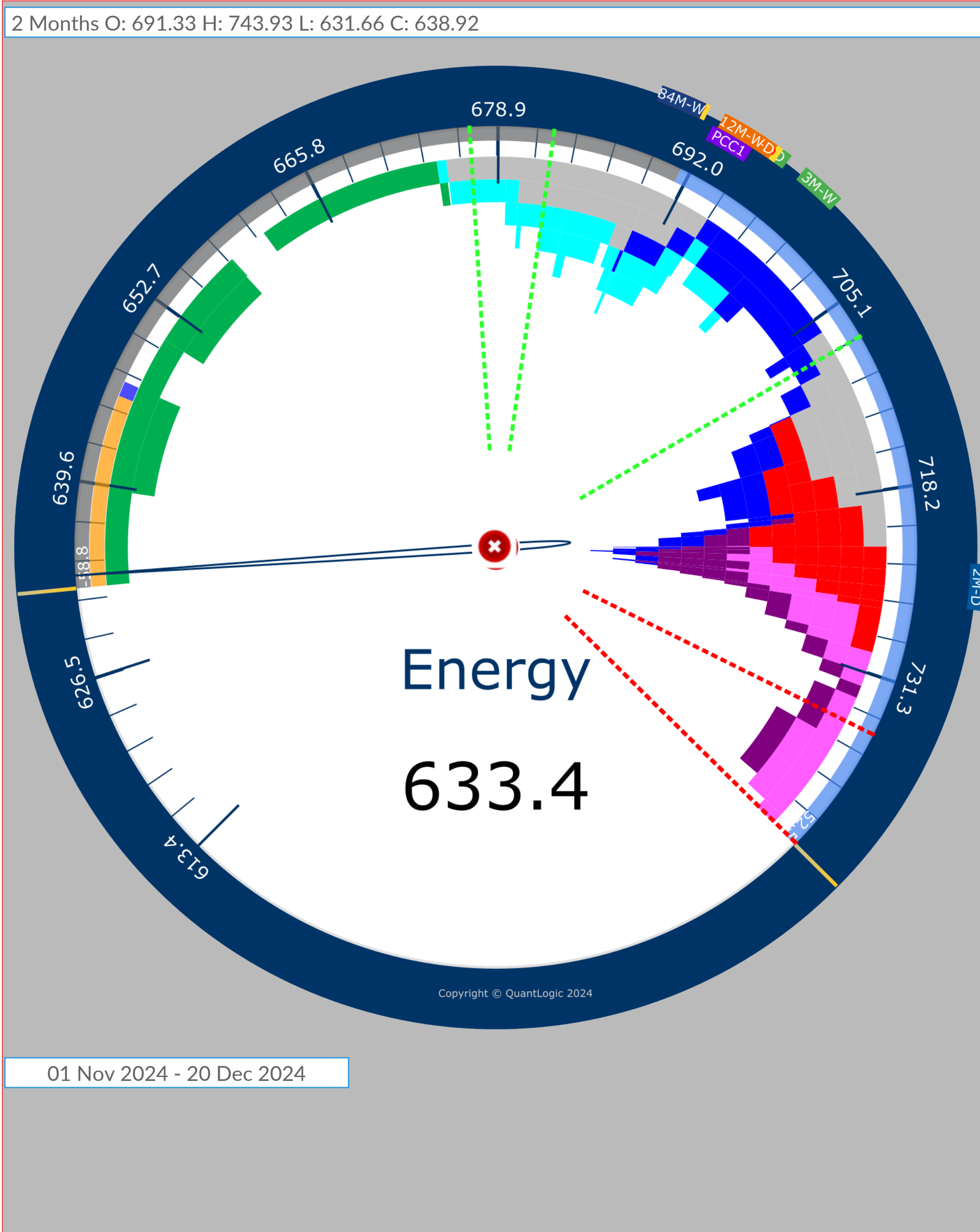
01 Nov 2024 - 15 Nov 2024	
15 Nov 2024	22 Nov 2024
29 Nov 2024	06 Dec 2024
13 Dec 2024	20 Dec 2024

Monthly Quantlogic Distribution (QD)

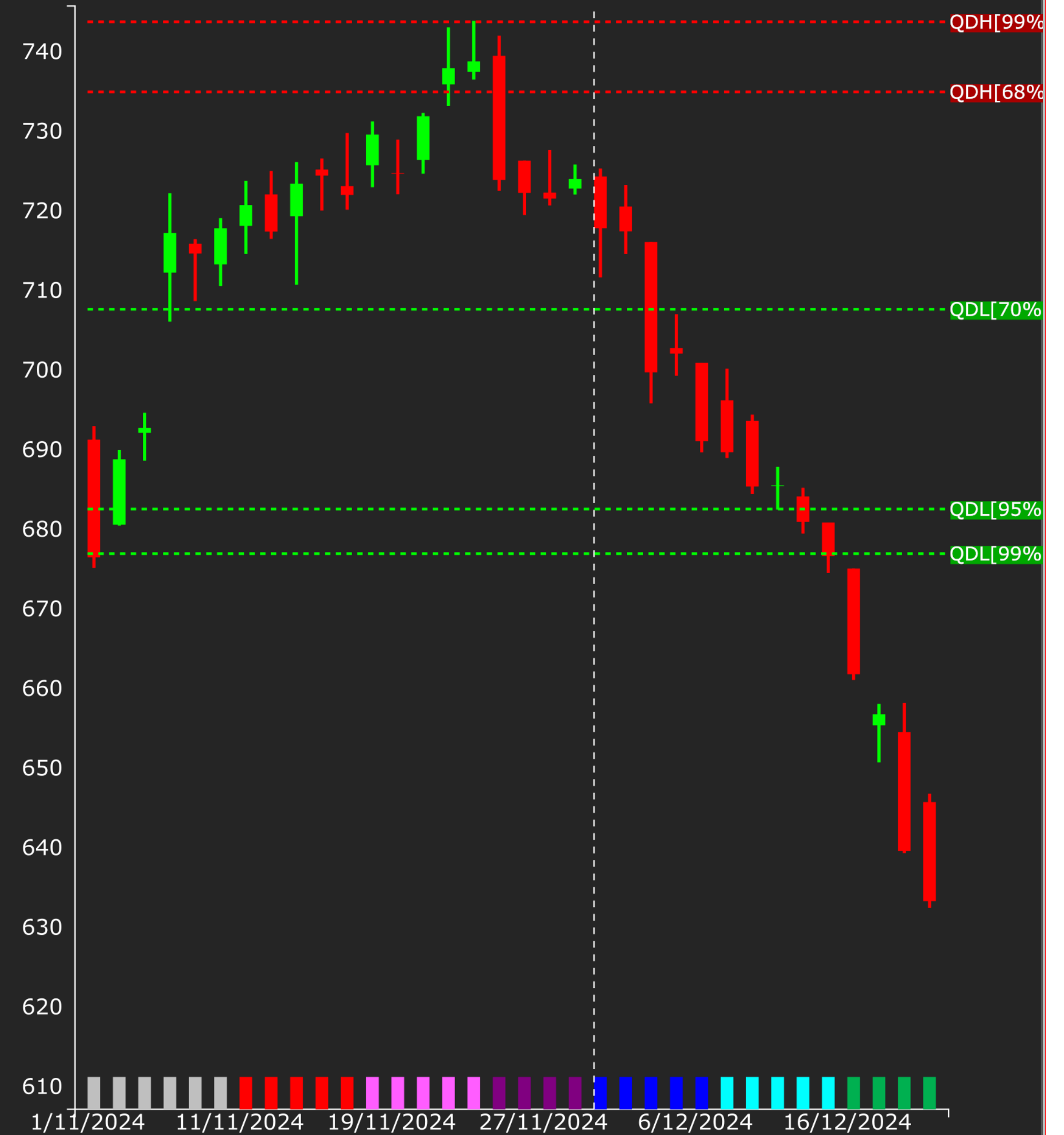
707.7	735
682.6	743.8
677	743.8

01 Nov 2024 - 20 Dec 2024

2 Months Daily Weekly Last 6 2 Months 12/20/24 12:42 AM



Energy [Daily]



20 Dec 2024 2 Months Daily 12/20/2024 12:42 AM

2 Months O: 690.32 H: 743.93 L: 631.66 C: 638.92

2 Months - O: 690.32 H: 743.93 L: 631.66 C: 638.92

Sector Information

- SEC** Energy
- IG** Energy
- SYM** \$SP500_1010

Price Control Point (PCPs)

- | | |
|--------------------|--------------------|
| 2M-D 690 | 3M-D 680.4 |
| 3M-W 687.5 | 6M-D 698.5 |
| 6M-W 687.5 | 12M-D 699.8 |
| 12M-W 686.8 | 24M-W 686.7 |
| 36M-W 686.7 | 48M-W 686.7 |
| 60M-W 686.7 | 72M-W 686.7 |
| 84M-W 686.7 | |

Price Control Cluster (PCCs)

- PCC1** 687.3

Color Key (Weekly)

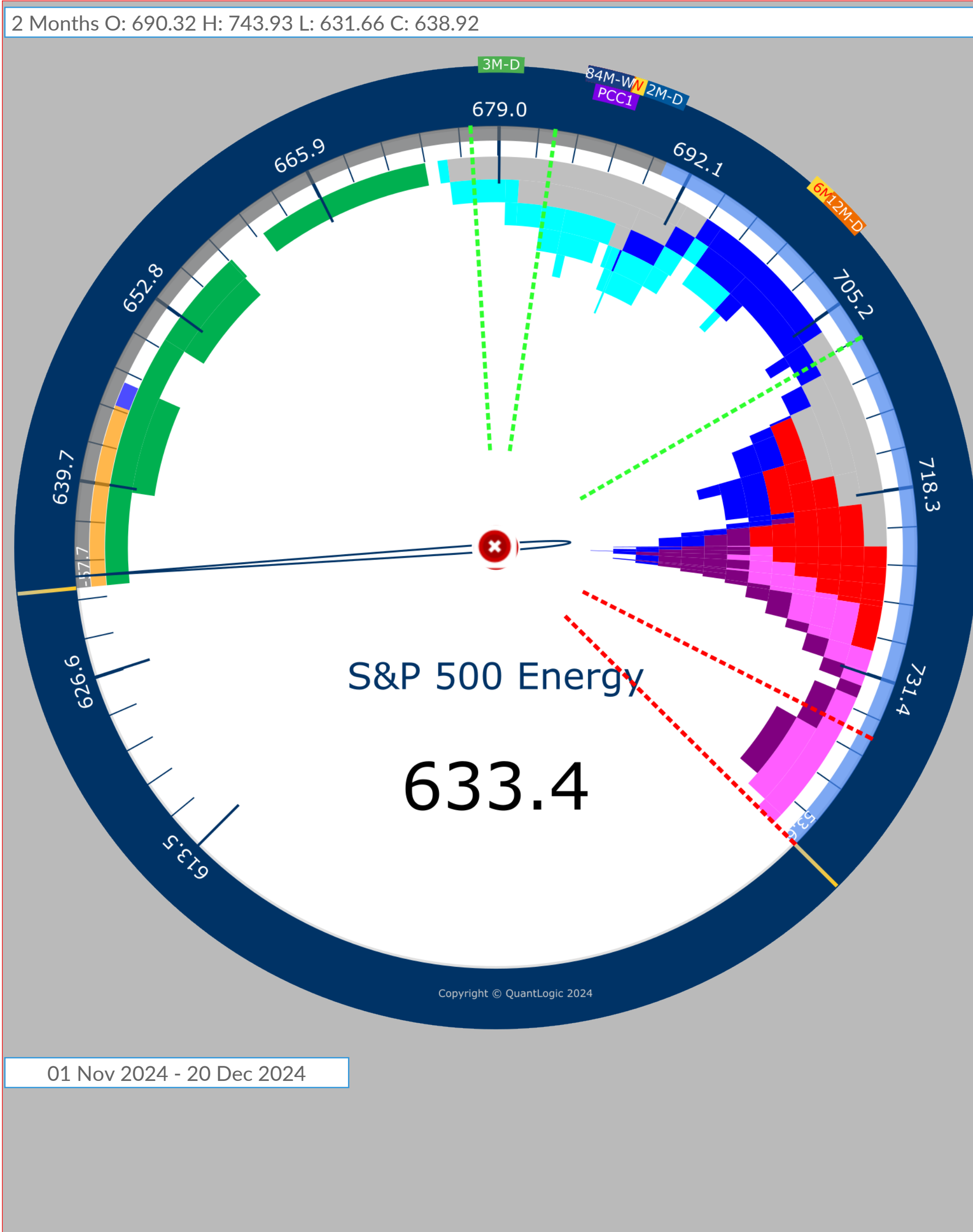
- 01 Nov 2024 - 15 Nov 2024
- 15 Nov 2024
- 22 Nov 2024
- 29 Nov 2024
- 06 Dec 2024
- 13 Dec 2024
- 20 Dec 2024

Monthly Quantlogic Distribution (QD)

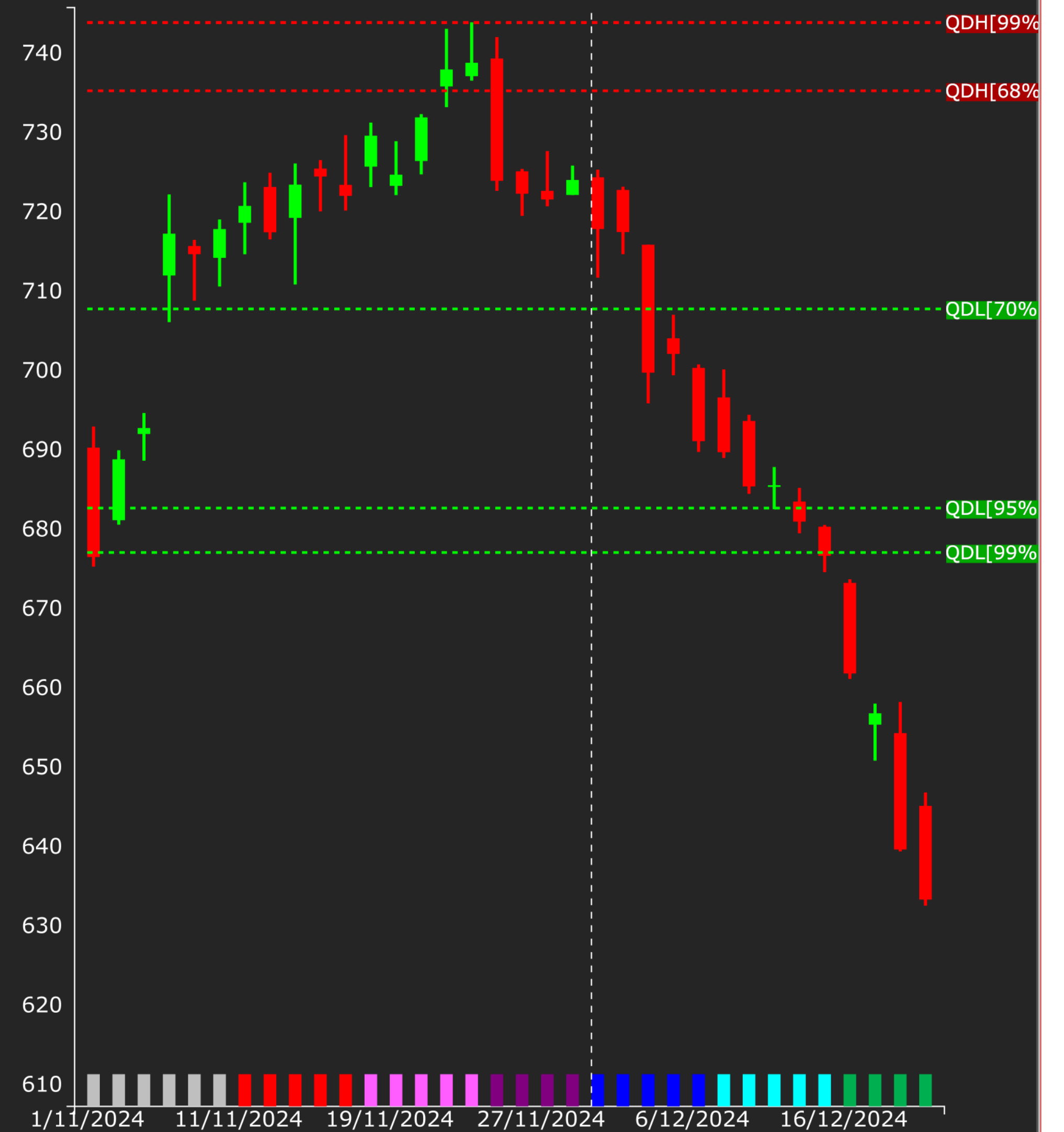
- 707.8
- 735.3
- 682.7
- 743.9
- 677.1
- 743.9

01 Nov 2024 - 20 Dec 2024

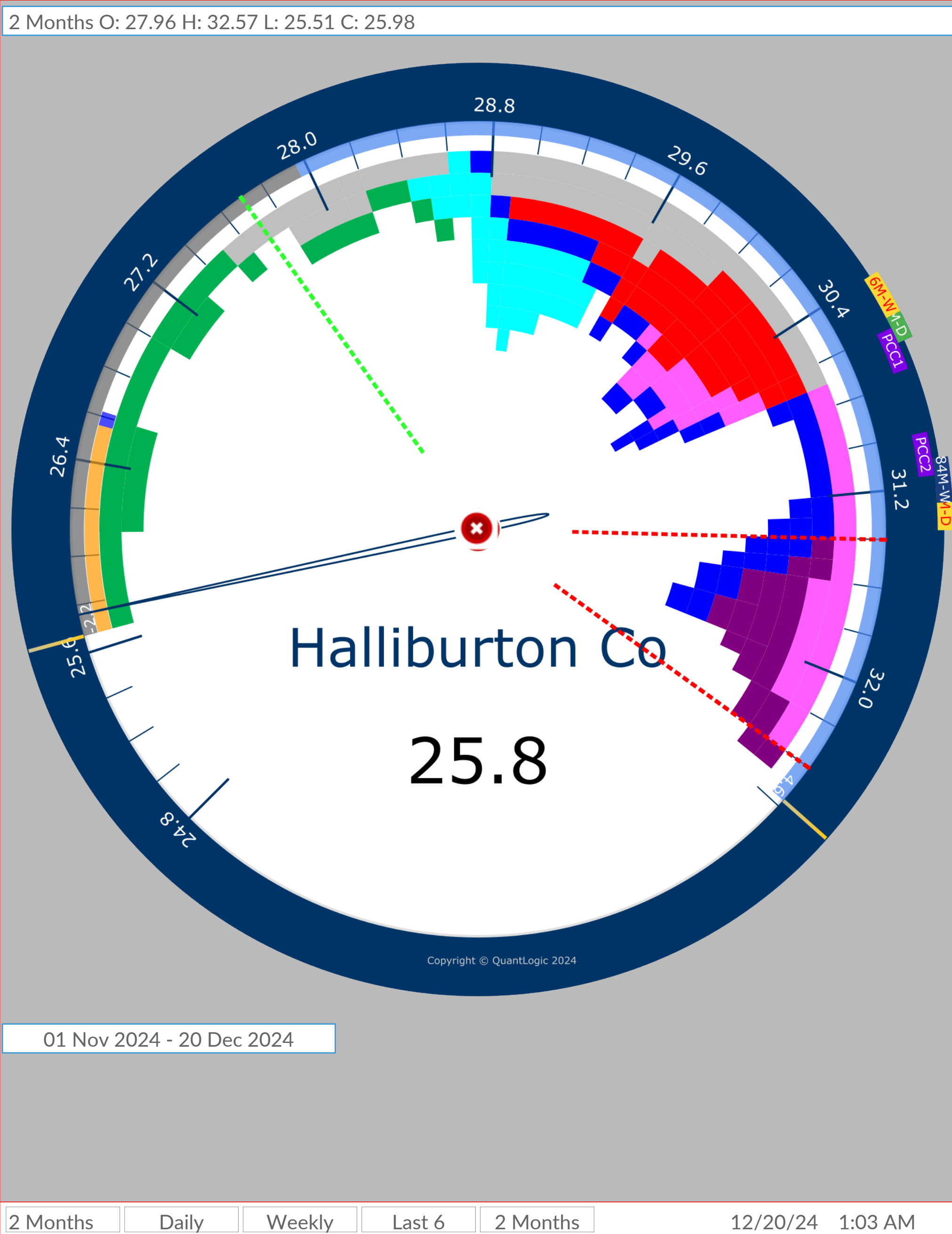
2 Months Daily Weekly Last 6 2 Months 12/20/24 12:42 AM



S&P 500 Energy [Daily]



20 Dec 2024 2 Months Daily 12/20/2024 12:42 AM



2 Months O: 281.51 H: 322.16 L: 268.05 C: 271.36

2 Months - O: 281.51 H: 322.16 L: 268.05 C: 271.36

Sector Information

- SEC Energy
- IG Energy
- IND Energy Equipment & Services
- SYM \$SP500_101010

Price Control Point (PCPs)

- 2M-D 293.1
- 3M-D 293.2
- 3M-W 297.7
- 6M-D 317.4
- 6M-W 310.2
- 12M-D 306.9
- 12M-W 310.2
- 24M-W 310.1
- 36M-W 307.1
- 48M-W 307.1
- 60M-W 307.1
- 72M-W 301.5
- 84M-W 301.5

Price Control Cluster (PCCs)

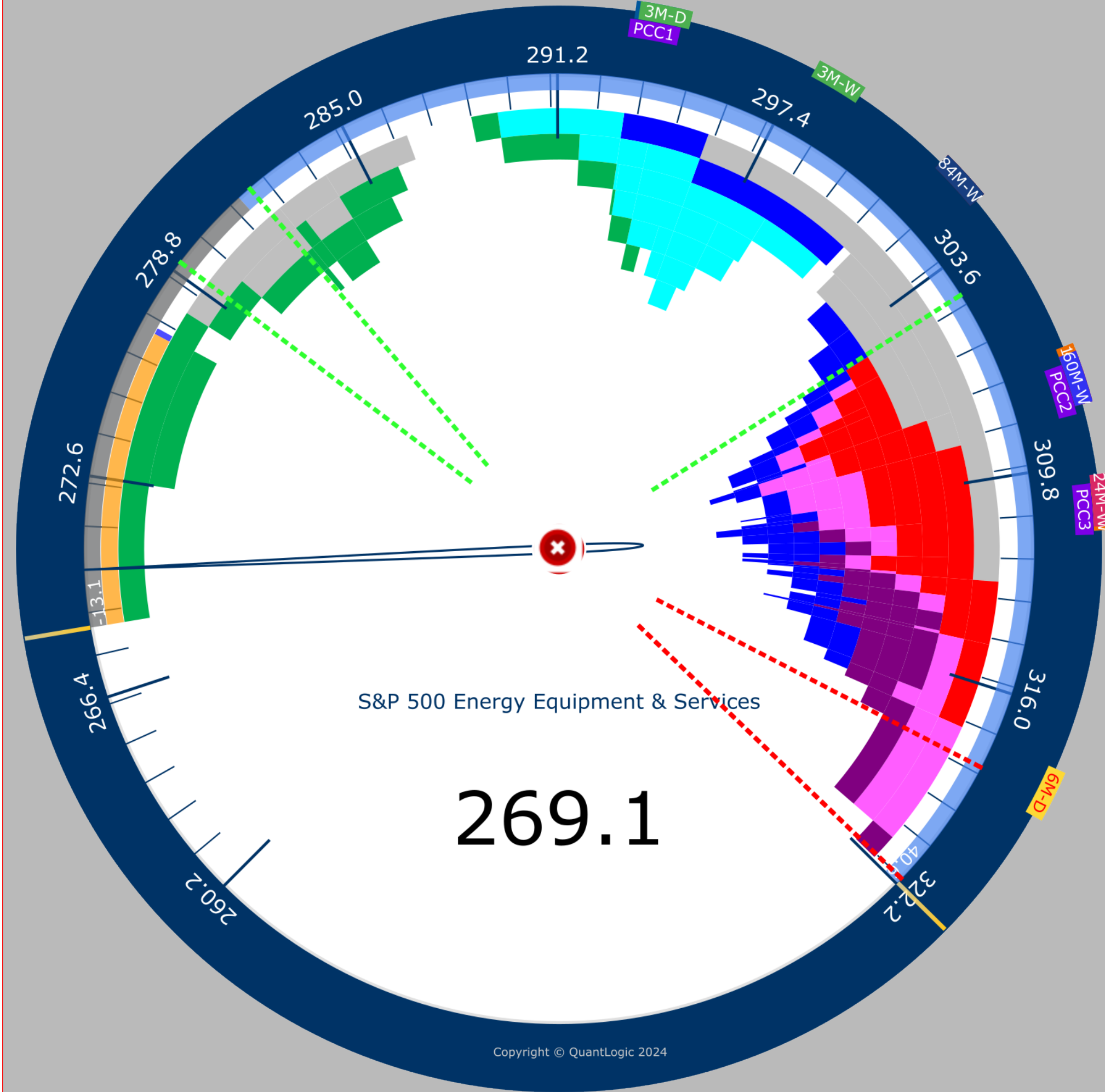
- PCC1 293
- PCC2 307.3
- PCC3 310.3

Color Key (Weekly)

- 01 Nov 2024 - 15 Nov 2024
- 15 Nov 2024
- 22 Nov 2024
- 29 Nov 2024
- 06 Dec 2024
- 13 Dec 2024
- 20 Dec 2024

Monthly Quantlogic Distribution (QD)

- 304.5
- 318.2
- 281.9
- 322
- 279.1
- 322



01 Nov 2024 - 20 Dec 2024

2 Months Daily Weekly Last 6 2 Months 12/20/24 12:42 AM

S&P 500 Energy Equipment & Services [Da



20 Dec 2024 2 Months Daily 12/20/2024 12:42 AM

Sector Information

- SEC Energy
- IG Energy
- IND Energy Equipment & Services
- SYM SLB

Price Control Point (PCPs)

- | | |
|--|--|
| 2M-D 43.3 | 3M-D 43.3 |
| 3M-W 44 | 6M-D 43.7 |
| 6M-W 44 | 12M-D 48.6 |
| 12M-W 44 | 24M-W 48.4 |
| 36M-W 52.7 | 48M-W 52.7 |
| 60M-W 52.7 | 72M-W 44.2 |
| 84M-W 44.2 | |

Price Control Cluster (PCCs)

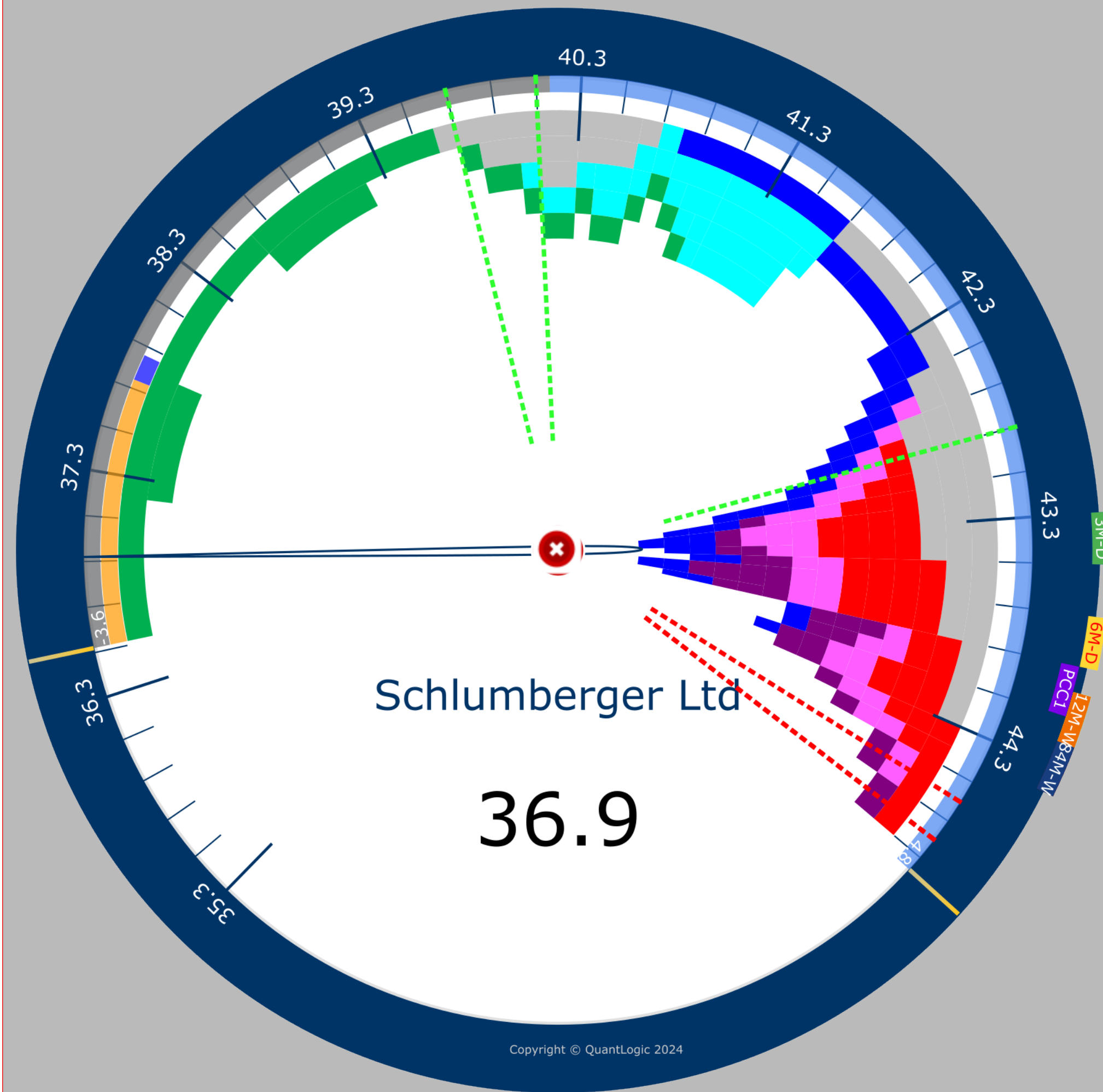
- | | |
|---|---|
| PCC1 43.9 | PCC2 52.6 |
|---|---|

Color Key (Weekly)

- | | |
|---|---|
| 01 Nov 2024 - 15 Nov 2024 | 22 Nov 2024 |
| 15 Nov 2024 | 06 Dec 2024 |
| 29 Nov 2024 | 13 Dec 2024 |
| 13 Dec 2024 | 20 Dec 2024 |

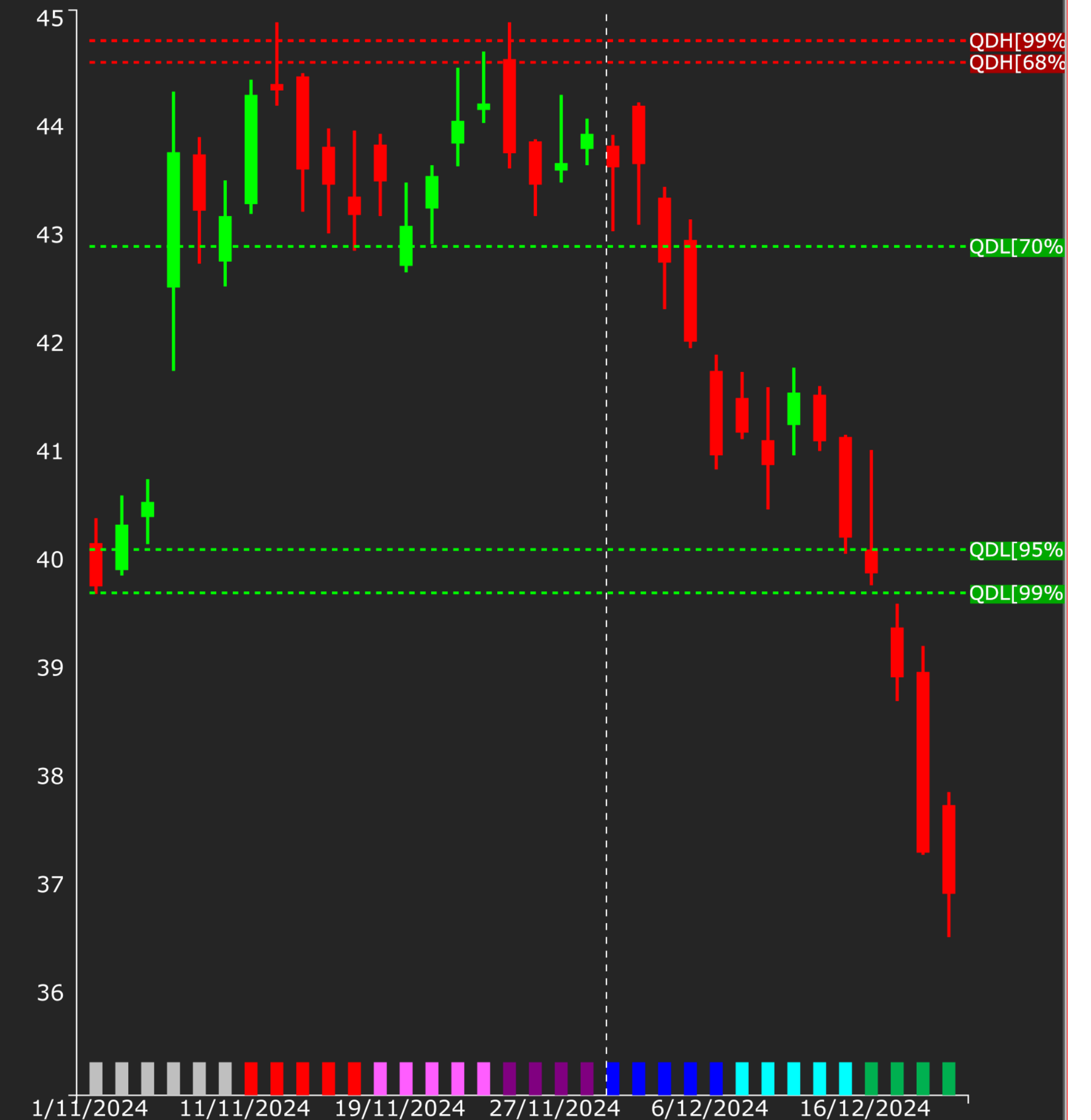
Monthly Quantlogic Distribution (QD)

- | | |
|---|---|
| --- 42.9 | --- 44.6 |
| --- 40.1 | --- 44.8 |
| --- 39.7 | --- 44.8 |

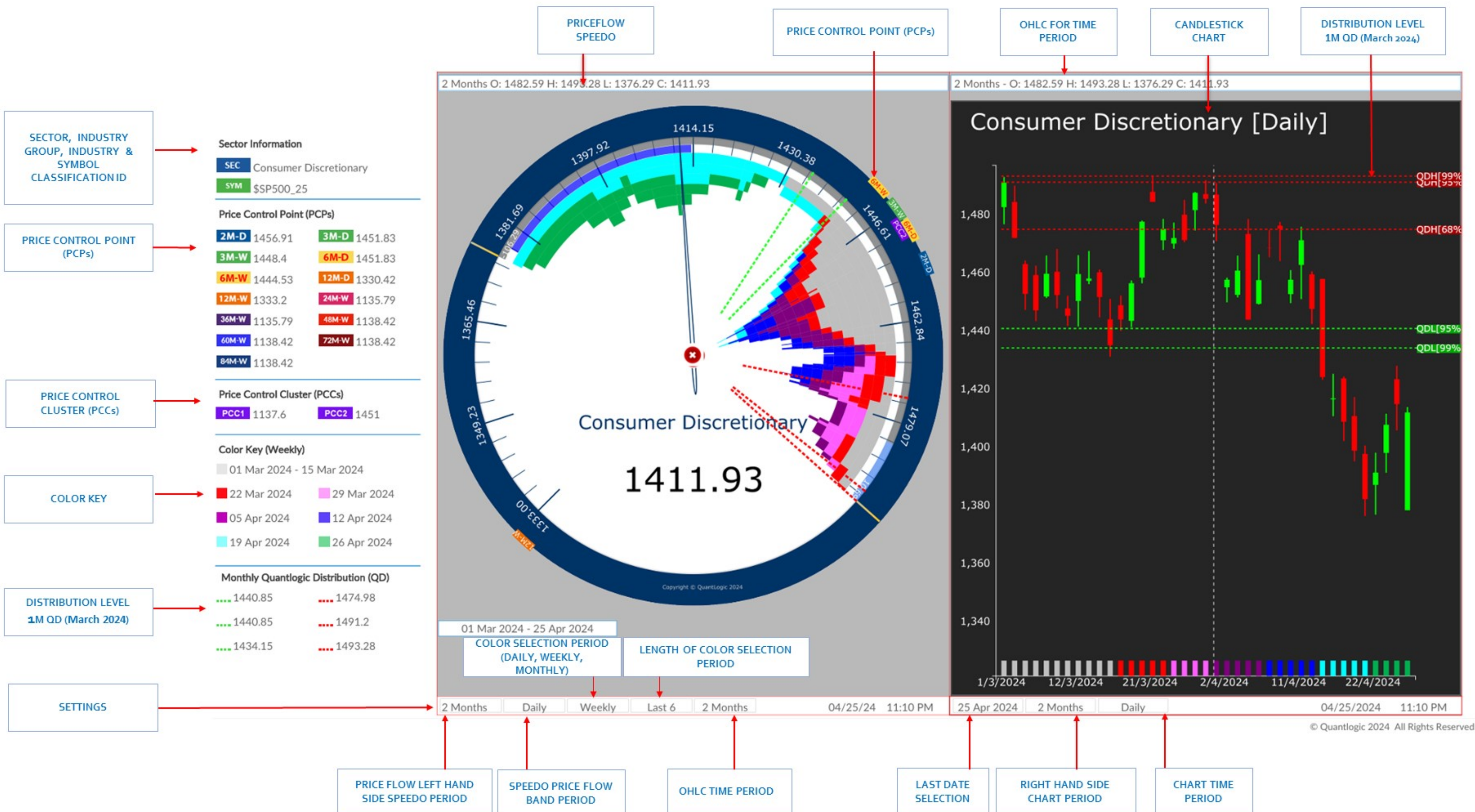


01 Nov 2024 - 20 Dec 2024

Schlumberger Ltd [Daily]



MARKET PRICE FLOW ANALYSIS : 2M DAILY SPEEDO VS 2M DAILY CHART



If you like to discuss Quantlogic Edge further, [Click here to book a Zoom meeting](#)



51 Ashley Gardens, Ambrosden Avenue,
London SW1P 1QF United Kingdom

Website: quantlogic.com

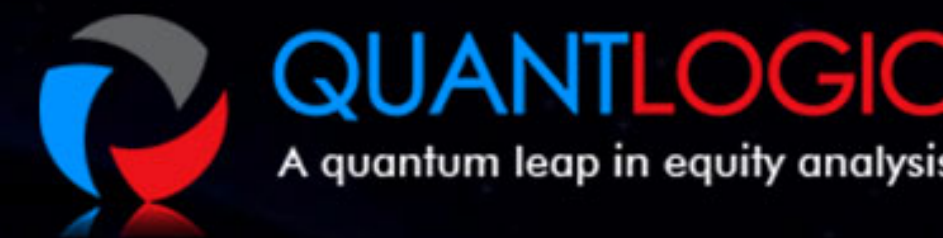
Mail: info@quantlogic.com

Tel: (UK) +44 (0)20 3289 2234

(US) +1 646 374 4234

Research Disclaimer:

Important Disclosure Statement from Quantlogic Ltd



This document is issued by Quantlogic Limited solely for its clients. It is for professional clients only. It may not be reproduced, redistributed or passed to any other person in whole or in part for any purpose without written consent of Quantlogic Ltd. This material is not directed at you if Quantlogic Ltd is prohibited or restricted by any legislation or regulation in any jurisdiction from making it available to you.

This document is provided for information purposes only and should not be regarded as an offer, solicitation, invitation, inducement or recommendation relating to the subscription, purchase or sale of any security or other financial instrument. This document does not constitute, and should not be interpreted as, investment advice. It is accordingly recommended that you should seek independent advice from a suitably qualified professional advisor before taking any decisions in relation to the investments detailed herein. All expressions of opinions and estimates constitute a judgement and, unless otherwise stated, are those of the author and the research department of Quantlogic Ltd only, and are subject to change without notice. Quantlogic Ltd is under no obligation to update the information contained herein. Whilst Quantlogic Ltd has taken all reasonable care to ensure that the information contained in this document is not untrue or misleading at the time of publication, Quantlogic Ltd cannot guarantee its accuracy or completeness, and you should not act on it without first independently verifying its contents. This document is not guaranteed to be a complete statement or summary of any securities, markets, reports or developments referred to herein. No representation or warranty either expressed or implied is made, nor responsibility of any kind is accepted, by Quantlogic Ltd or any of its respective directors, officers, employees or analysts either as to the accuracy or completeness of any information contained in this document nor should it be relied on as such. No liability whatsoever is accepted by Quantlogic Ltd or any of its respective directors, officers, employees or analysts for any loss, whether direct or consequential, arising whether directly or indirectly as a result of the recipient acting on the content of this document, including, without limitation, lost profits arising from the use of this document or any of its contents.

This document is provided with the understanding that Quantlogic Ltd is not acting in a fiduciary capacity and it is not a personal recommendation to you. Investing in securities entails risks. Past performance is not necessarily a guide to future performance. The value of and the income produced by products may fluctuate, so that an investor may get back less than he invested. Investments in the entities and/or the securities or other financial instruments referred to are not suitable for all investors and this document should not be relied upon in substitution for the exercise of independent judgment in relation to any such investment. The stated price of any securities mentioned herein will generally be the closing price at the end of any of the three business days immediately prior to the publication date on this document. This stated price is not a representation that any transaction can be effected at this price.

Quantlogic Ltd and its respective analysts are remunerated for providing investment research to professional investors, corporations, other research institutions and consultancy houses. Quantlogic Ltd, or its respective directors, officers, employees and clients may have or take positions in the securities or entities mentioned in this document. Any of these circumstances could create, or be perceived as creating, conflicts of interest. Quantlogic Ltd analysts are not censored in any way and are free to express their personal opinions. As a result, Quantlogic Ltd may have issued other documents that are inconsistent with and reach different conclusions from, the information contained in this document. Those documents reflect the different assumptions, views and analytical methods of their authors. No director, officer or employee of Quantlogic Ltd is on the board of directors of any company referenced herein and no one at any such referenced company is on the board of directors of Quantlogic Ltd.

Quantlogic Ltd is an appointed representative of Messels Ltd which is authorised and regulated by the Financial Conduct Authority. Residents of the United Kingdom should seek specific professional financial and investment advice from a stockbroker, banker, solicitor, accountant or other independent professional adviser authorised pursuant to the Financial Services and Markets Act 2000.

The content of this report is covered by our Policy of Independence which may be viewed at www.Quantlogic.com

The performance history of research recommendations over the last 12 months is available to clients on request.

Analysts' Certification

The analysts involved in the production of this document hereby certify that the views expressed in this document accurately reflect their personal views about the securities mentioned herein. The analysts point out that they may buy, sell or already have taken positions in the securities, and related financial instruments, mentioned in this document.